

Port Louis Communications Base Station Wind Power





Overview

Can floating wind turbines be used in Port-Saint-Louis-du-Rhône?

Comprised of three floating wind turbines located more than 17 km off the coast of Port-Saint-Louis-du-Rhône, the project will demonstrate the technical feasibility of this promising technology. The project was developed in liaison with local actors over a number of years.

How does Prysmian adapt to floating offshore wind turbines?

Its adaptation for floating offshore wind turbines is a world first. The dynamic cables, built by Prysmian, which follow and adapt to the movements of the platforms, transport the electricity produced by the Provence Grand Large wind turbines.

Why is EDF launching a floating offshore wind project in France?

EDF Group's CEO Bernard Fontana described the project as a key step in France's energy sovereignty and an important milestone in developing an industrial sector around floating offshore wind. He also acknowledged the crucial role played by local communities and partners in making the project possible.

Will CPP invest in France's first floating offshore wind farm?

Bill Rogers, Head of Sustainable Energies at CPP Investments, said: "CPP Investments is pleased to support the launch of France's first floating offshore wind farm in collaboration with Enbridge and EDF.



Port Louis Communications Base Station Wind Power



[Lome Communication Base Station Wind Power ...](#)

Oct 27, 2025 · The green base station solution involves base station system architecture, base station form, power saving technologies, and application of green technologies. Using SDR ...

[Provence Grand Large : Full Commissioning of the first ...](#)

Jun 5, 2025 · The Provence Grand Large wind farm is a pilot project with three floating wind turbines installed 17 km off the coast of Port-Saint-Louis-du-Rhône. As the first floating wind ...



[France's First Floating Offshore Wind Farm Now Fully ...](#)

Jun 6, 2025 · The pilot wind farm, located 17 kilometers off the coast of Port-Saint-Louis-du-Rhône, in the Gulf of Fos (Bouches-du-Rhône), has a capacity of 25 megawatts. The project ...

[Port Saint Louis du Rhône Wind Farm France](#)

Port Saint Louis du Rhône Wind Farm France is located at On Shore. Location coordinates are: Latitude= 43.4365, Longitude= 4.7745. This infrastructure is of TYPE Wind Power Plant with a



...



[The wind power consumption of communication base ...](#)

Oct 9, 2025 · Why do off-grid telecommunication base stations need generators? As the incessant demand for wireless communication grows, off-grid telecommunication base station sites ...



[Connecting Large Offshore Wind Farms with Private LTE](#)

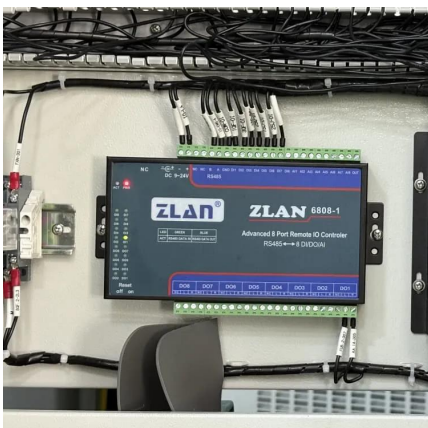
Oct 13, 2022 · Offshore wind farms are typically located in remote areas, making it challenging to establish reliable connectivity using public mobile networks. Private mobile networks allow

...



[Research on Offshore Wind Power Communication System ...](#)

Feb 5, 2024 · The 5G network with specific bandwidth improved the security of the communication system. **Result** After the completion of the 5G communication system ...





Mauritius

Dec 2, 2025 · The Saint Louis Power Station is located five kilometres south of the centre of Port Louis, the capital city situated on the North West of the island. The electricity produced by the ...



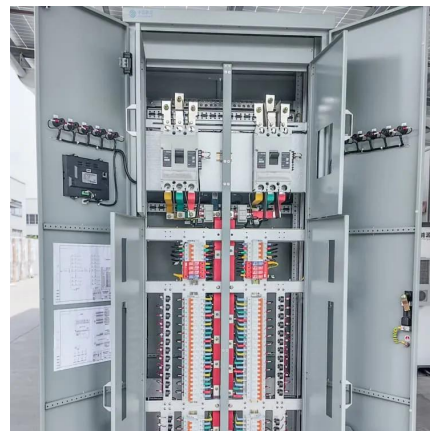
Offshore wind Offshore wind: Communication

Oct 12, 2020 · Private LTE network LTE is a standard for 4G wireless broadband technology offering network for mobile device users - creating a communication system and network/ ...



We are preparing the offshore wind turbine of tomorrow

2 days ago · Provence Grand Large pilot project Comprised of three floating wind turbines located more than 17 km off the coast of Port-Saint-Louis-du-Rhône, the project will demonstrate the ...



Contact Us

For catalog requests, pricing, or partnerships, please visit:
<https://www.llsolarenergy.co.za>



Scan QR Code for More Information



<https://www.lsolarenergy.co.za>