

Power Control Unit and Inverter





Overview

How does an inverter work in a PCU?

An inverter in the PCU converts a DC current into an AC current and vice versa to drive the motor and to recover the regenerated electric power. DENSO's newly developed double-sided cooling technology prevents temperature increases in the power semiconductor which converts the current.

What is an electric power control unit?

The Electric Power Control Unit is the linchpin of an EV's operation, enabling advanced functionalities that distinguish electric vehicles from traditional ones. Its role in optimizing energy efficiency is critical for extending driving range, a key factor influencing EV adoption.

What are the components of electric power control unit (EPCU)?

Key Components of Electric Power Control Unit (EPCU) EPCU includes three main components - inverter, low voltage DC-DC converter, and vehicle control unit (VCU). Each of these components serves a vital function in ensuring the efficient operation of an electric vehicle (EV).

What are Power Control Units (PCUs)?

The technological advancements in electric vehicles (EVs) are fascinating, and at the heart of these innovations lie components such as Power Control Units (PCUs). PCUs are integral to the efficient functioning of electric vehicles, as they manage the power from the battery to the motor and other systems.



Power Control Unit and Inverter



[A Unified Control Design of Three Phase ...](#)

Jun 8, 2025 · This article proposes a unified control framework for voltage source inverters (VSIs) operating in both grid-forming and grid-following ...

[HEV/EV inverter & motor control design resources , TI](#)

3 days ago · Traction inverter and motor control systems are critical to enable optimal electric vehicle (EV) performance. To build the next generation of these systems, design engineers ...



[A Unified Control Design of Three Phase Inverters Suitable ...](#)

Jun 8, 2025 · This article proposes a unified control framework for voltage source inverters (VSIs) operating in both grid-forming and grid-following modes, integrating current, voltage, and ...



[Electric vehicle PCU and inverter/converter technology and ...](#)

Mar 23, 2025 · The control unit takes input from various sensors within the vehicle to make these decisions. For example, if the vehicle requires a sudden surge of power, such as during ...



[Understanding Power Control System: Key ...](#)

Jun 20, 2025 · The crucial elements of a power control system--charge controllers, inverters, storage units, and monitoring systems--offer a ...



[Key Components of an Electric Power Control Unit in EVs](#)

Jan 28, 2025 · Key Components of the Electric Power Control Unit The Electric Power Control Unit in EVs is composed of several essential components that work in tandem to control and ...



[Inverter CPU and Modern Power Systems: Intelligent Control...](#)

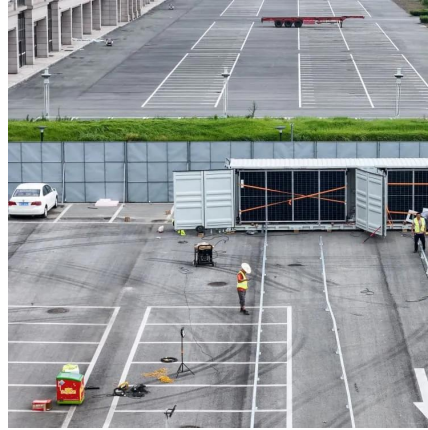
Jul 20, 2024 · The inverter CPU, as the core control unit of the inverter, integrates advanced intelligent control technology and highly integrated system design solutions, providing strong ...





[What is an Electric Power Control Unit \(EPCU\) ...](#)

Aug 1, 2024 · The Electric Power Control Unit (EPCU) manages and controls the flow of electric power between the battery and the various electrical ...



[Understanding Power Control System: Key Components and ...](#)

Jun 20, 2025 · The crucial elements of a power control system--charge controllers, inverters, storage units, and monitoring systems--offer a pathway to energy independence and peace of ...

[Power Control and Management unit-125kW 300kW 450kW ...](#)

Detailed Product Description 1. Product introduction PCM (Power Control and Management Unit) is usually responsible for regulating power flow maintaining voltage/frequency stability and ...



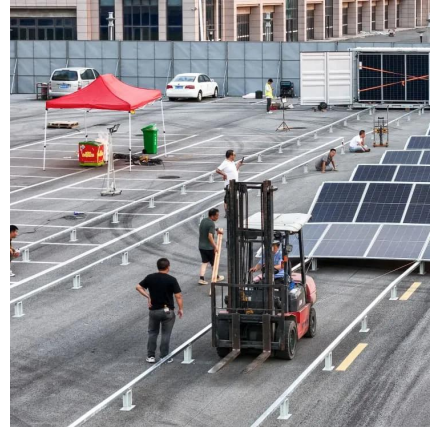
[Active and Reactive Power Control in a Three ...](#)

Jan 24, 2025 · Reactive power is required to increase the electrical grid's capacity. Consequently, a PV inverter providing reactive power is ...



[Key Components of an Electric Power Control ...](#)

Jan 28, 2025 · Key Components of the Electric Power Control Unit The Electric Power Control Unit in EVs is composed of several essential ...

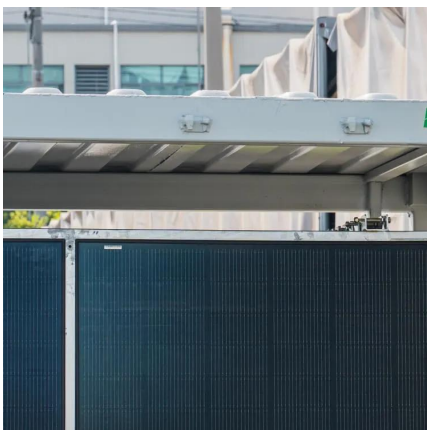
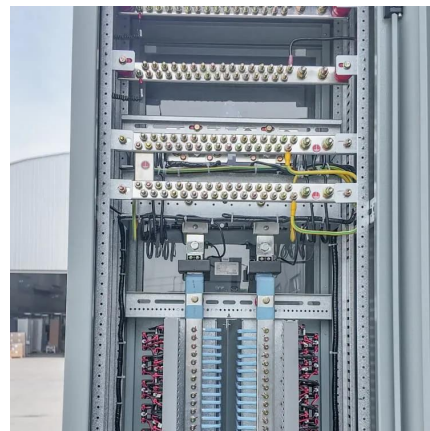


Active and Reactive Power Control in a Three-Phase Photovoltaic Inverter

Jan 24, 2025 · Reactive power is required to increase the electrical grid's capacity. Consequently, a PV inverter providing reactive power is necessary. A PV power system that is currently in ...

[What is an Electric Power Control Unit \(EPCU\) of an EV?](#)

Aug 1, 2024 · The Electric Power Control Unit (EPCU) manages and controls the flow of electric power between the battery and the various electrical systems in an electric vehicle (EV). It ...



[Power Control Unit , Products & Services , What we do](#)

Nov 19, 2025 · Power Control Unit DENSO developed the Power Control Unit (PCU) for use in motor-driven hybrid and electric vehicles. This highly efficient PCU consists of three ...



Contact Us

For catalog requests, pricing, or partnerships, please visit:
<https://www.llsolarenergy.co.za>

Scan QR Code for More Information



<https://www.llsolarenergy.co.za>