

Power station connected to the power grid generator set





Overview

How does a grid system work?

Each generator and grid system operates using a three-phase system, commonly labeled L1, L2, and L3. The generator must follow the same phase rotation as the grid, meaning that L1 of the generator must align with L1 of the grid, and so on.

What happens if a generator connects to a grid without synchronization?

When a generator connects to a grid or other generators without synchronization, differences in voltage or phase can create surges that threaten the system's integrity. Electrical surges may damage both the generator and the grid. This can lead to power outages and high repair costs.

What happens if a generator is connected to a grid?

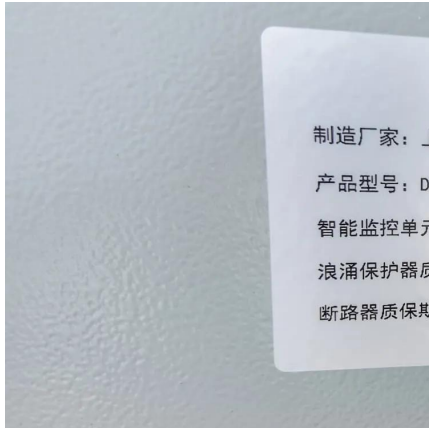
When it is connected to the grid the generator will be overexcited and it will put out MVAR. If the generator voltage is less than the grid voltage, this means that the internal voltage of the generator is lower than the grid voltage. When it is connected to the grid the generator will be under-excited and it will absorb MVAR.

How do generator sets work?

This causes the voltage on the bus to build up and forces the generator sets to come into sync with each other. There is a variation of this method known as dead field paralleling in which the generator sets start with the paralleling breakers open and then close them as the engine starter disengages.



Power station connected to the power grid generator set



[Preparing to synchronize a generator to the grid](#)

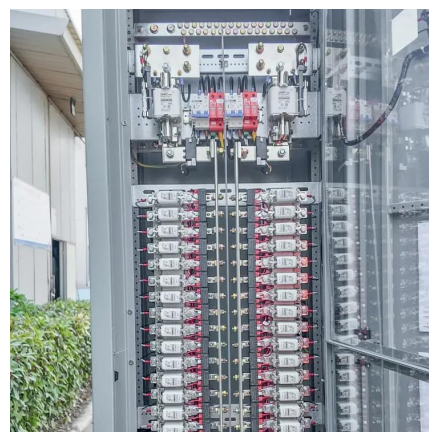
Phase Sequence Voltage Magnitude Frequency Phase Angle Synchronisation of Generators to A Busbar As previously mentioned, the phase angle between the voltage produced by the generator and the voltage produced by the grid must be zero. The phase angle (0 to 360°) can be readily observed by comparing the simultaneous occurrence of the peaks or zero crossings of the sinusoidal waveforms. At that instance (Figure 4 below), the pointer on the synch See more on electrical-engineering-portal Electronics Hub

Synchronization of Generators , Different ...

Nov 2, 2024 · Similarly, grid-connected generators require synchronization to provide power from decentralized sources (such as wind and solar). ...

[Synchronization Of Generators For Power Systems](#)

1 day ago · Synchronization of Generators is the process of matching the output of one generator with the electrical parameters of another power source (such as a power grid or another ...



[Paralleling Generators for Large Power Plants](#)

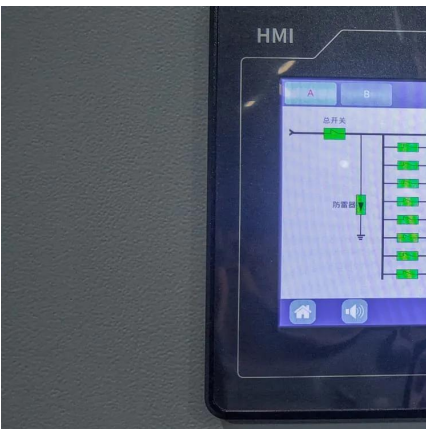
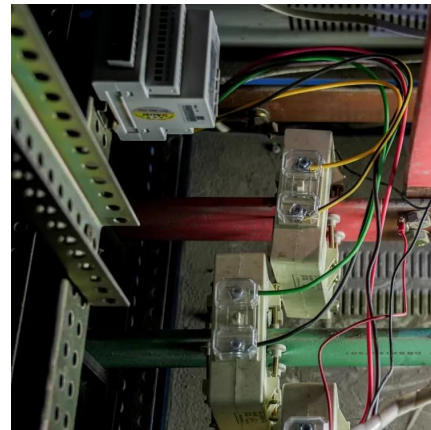
Jan 7, 2025 · Understand the principles of



paralleling generators in large power plants. Learn how multiple generators work together to meet power demands and ensure grid stability.

Synchronization of Generators , Different Methods

Nov 2, 2024 · Similarly, grid-connected generators require synchronization to provide power from decentralized sources (such as wind and solar). Synchronization helps integrate these sources ...



How to Synchronize Generator with Grid (Power System)

4 days ago · The article discusses the process of synchronizing a synchronous generator with the power system, focusing on the essential conditions for safe connection, such as voltage, ...

Preparing to synchronize a generator to the grid

Mar 27, 2013 · The terminal voltage of the generator will either match the phase voltage or be proportional to it by $\sqrt{3}$, based upon whether the machine is delta or star-connected. The ...





Power topic #5410679 Considerations when Paralleling ...

Oct 1, 2018 · VAR/power factor controllers should be used when generators are paralleled to a utility source (or other infinity source) as the voltage and frequency outputs of connected ...

Basic requirements for connecting generator sets to the grid

Nov 29, 2024 · The grid can be regarded as an infinite grid or an infinite bus for a single generator. After the synchronous generator is connected in parallel to the grid, its operating ...



How to Run a Diesel Generator While Still Tied to the Grid? - Walt Power

Maintaining your diesel generator is key to ensuring that it functions correctly while connected to the grid. Regular maintenance helps prevent breakdowns and improves the efficiency of your ...

1. ESS introduction & features

Oct 23, 2024 · A utility grid failure is then the only time battery power is used as a backup. Once the grid is restored, the batteries will be recharged either from the grid or from solar panels ...





Contact Us

For catalog requests, pricing, or partnerships, please visit:
<https://www.llsolarenergy.co.za>

Scan QR Code for More Information



<https://www.llsolarenergy.co.za>