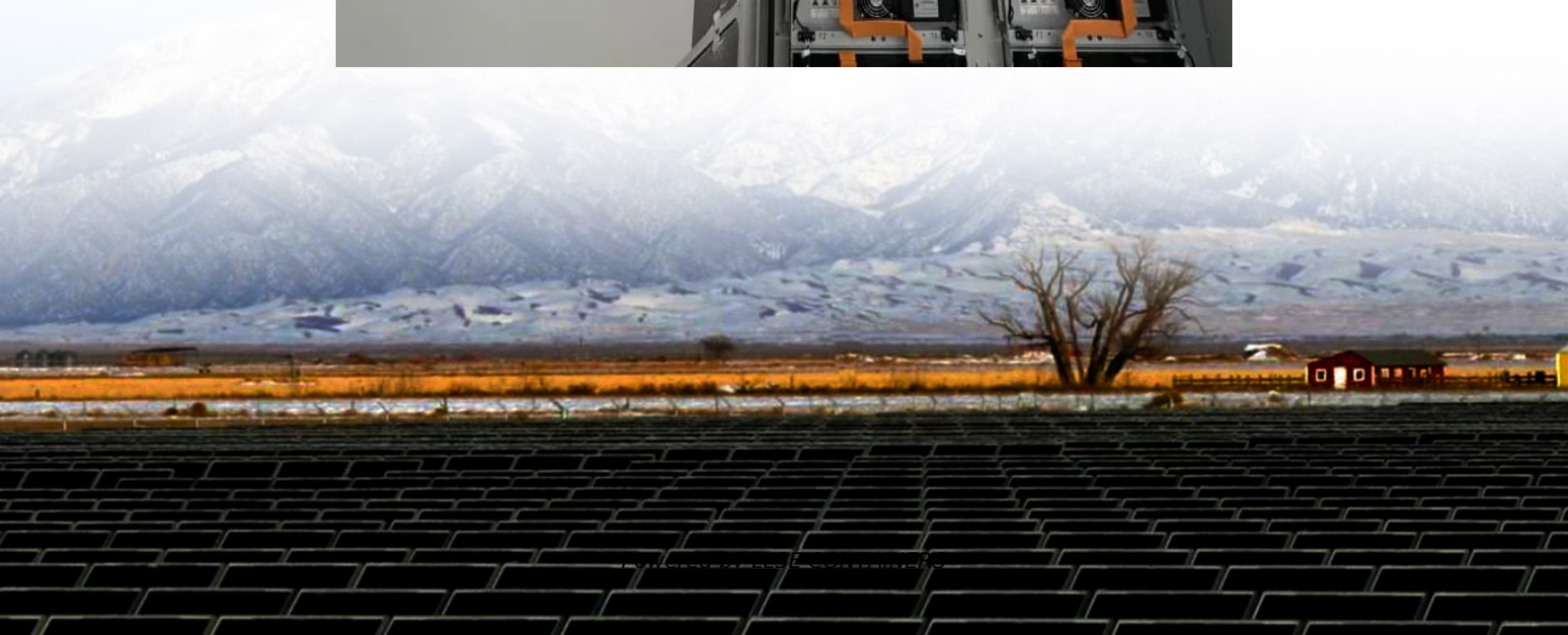


Power tool lithium batteries can be connected in series





Overview

Can a lithium battery be connected in parallel?

Although lithium batteries can be configured in series, it requires attention to the BMS or PCM. Connecting a battery in parallel is when you connect two or more batteries together to increase the amp-hour capacity. With a parallel battery connection the capacity will increase, however the battery voltage will remain the same.

What is lithium battery series connection?

This article will answer your questions: Lithium battery series connection is to connect multiple batteries end to end, with the positive electrode connected to the negative electrode of the next battery, which can increase the total voltage without changing the capacity.

Are series and parallel connection of lithium batteries safe?

The series and parallel connection of lithium batteries is a key technology to increase voltage and capacity, but it also contains safety risks. This article will analyze in detail the principles, methods and precautions of series and parallel connection of lithium batteries to help you avoid potential risks and build a battery system correctly.

When should a lithium battery be connected in series?

You should connect lithium batteries in series when your device requires a higher voltage than a single battery can provide. For example, if your device operates at 7.4V, connecting two 3.7V batteries in series would be appropriate. This setup is commonly used in applications like electric scooters, drones, or other high-voltage devices.



Power tool lithium batteries can be connected in series

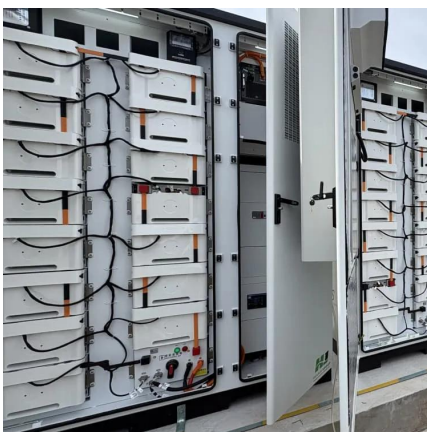


[Series vs Parallel Battery Setup: Optimize Performance](#)

Apr 4, 2025 · Is it better to connect lithium batteries in series or parallel? Choosing between series and parallel battery connections confuses many engineers. A wrong choice can reduce ...

[Safety Tips for Connecting Batteries in Series and Parallel](#)

Apr 22, 2025 · This configuration increases the total voltage while maintaining the same capacity as a single battery. For ...



[Lithium Battery Series vs. Parallel Connections: Benefits](#)

Apr 22, 2025 · Lithium batteries can be connected in series or parallel configurations to meet specific voltage and capacity needs, significantly impacting performance and application ...

[How to Connect Lithium Batteries in Series and Parallel?](#)

Jun 7, 2024 · Lithium batteries power a wide range of devices, from smartphones to electric vehicles. Knowing how to connect these batteries in series, parallel, or even a combination, ...



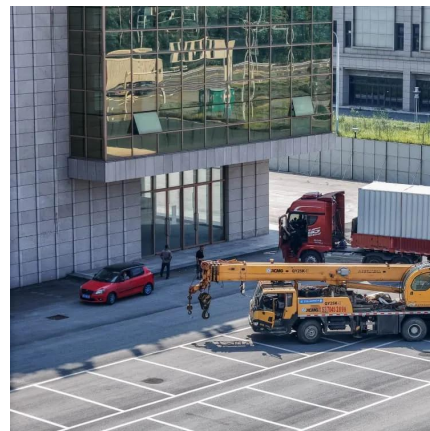
[Series vs Parallel Battery Wiring: Key ...](#)

Apr 8, 2025 · When using multiple batteries in a project, you have two primary wiring configurations--series and parallel. Each has distinct ...



[Can lithium battery cells be connected in ...](#)

Jul 24, 2025 · By connecting a large number of lithium battery cells in series, manufacturers can create battery packs with the voltage and capacity ...



[Everything About Lithium Battery Series & Parallel](#)

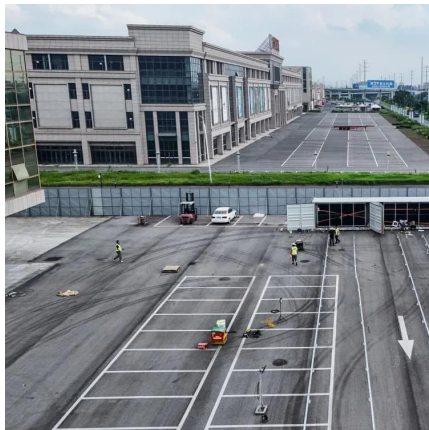
May 21, 2025 · Learn how to safely connect lithium batteries in series and parallel. Avoid risks, extend battery life and build reliable power systems with our expert guide.





[Safety Tips for Connecting Batteries in Series and Parallel](#)

Apr 22, 2025 · This configuration increases the total voltage while maintaining the same capacity as a single battery. For example, connecting three 3.7V lithium-ion batteries in series results in ...

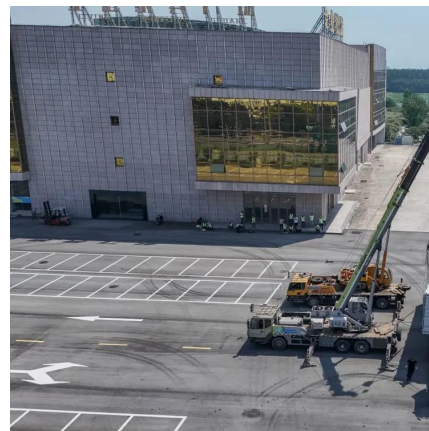


[Lithium Series, Parallel and Series and Parallel Connections](#)

Mar 23, 2021 · Lithium Series, Parallel and Series and Parallel Connections Introduction Lithium battery banks using batteries with built-in Battery Management Systems (BMS) are created by ...

[How to Connect Batteries in Series and ...](#)

We recommend you charge each battery individually to avoid battery imbalance. Sealed lead acid batteries have been the battery of choice for ...



[Everything About Lithium Battery Series & Parallel](#)

May 21, 2025 · Learn how to safely connect lithium batteries in series and parallel. Avoid risks, extend battery life and build reliable power systems with our expert guide.



[Series vs Parallel Battery Wiring: Key Differences, Pros & Cons](#)

Apr 8, 2025 · When using multiple batteries in a project, you have two primary wiring configurations--series and parallel. Each has distinct advantages depending on your needs, ...



[Lithium Battery Series vs. Parallel ...](#)

Apr 22, 2025 · Lithium batteries can be connected in series or parallel configurations to meet specific voltage and capacity needs, significantly ...

[How to Connect Batteries in Series and Parallel](#)

We recommend you charge each battery individually to avoid battery imbalance. Sealed lead acid batteries have been the battery of choice for long string, high voltage battery systems for many ...



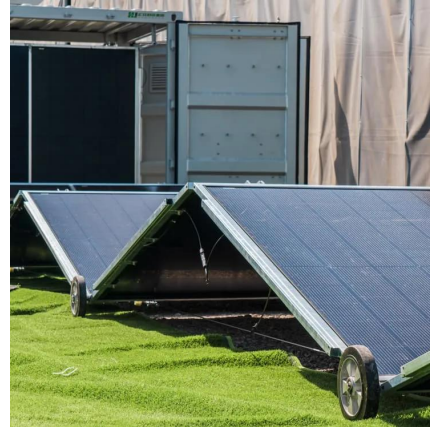
[How to Connect Lithium Batteries in Series ...](#)

Jun 7, 2024 · Lithium batteries power a wide range of devices, from smartphones to electric vehicles. Knowing how to connect these batteries ...



Can lithium battery cells be connected in series?

Jul 24, 2025 · By connecting a large number of lithium battery cells in series, manufacturers can create battery packs with the voltage and capacity required to power the vehicle for a ...



Series, Parallel, and Series-Parallel Connections of Batteries

Learn battery connections: series, parallel, and series-parallel setups. Ensure safety, maximize performance, and extend battery lifecycles.

Contact Us

For catalog requests, pricing, or partnerships, please visit:
<https://www.llsolarenergy.co.za>

Scan QR Code for More Information



<https://www.lsolarenergy.co.za>