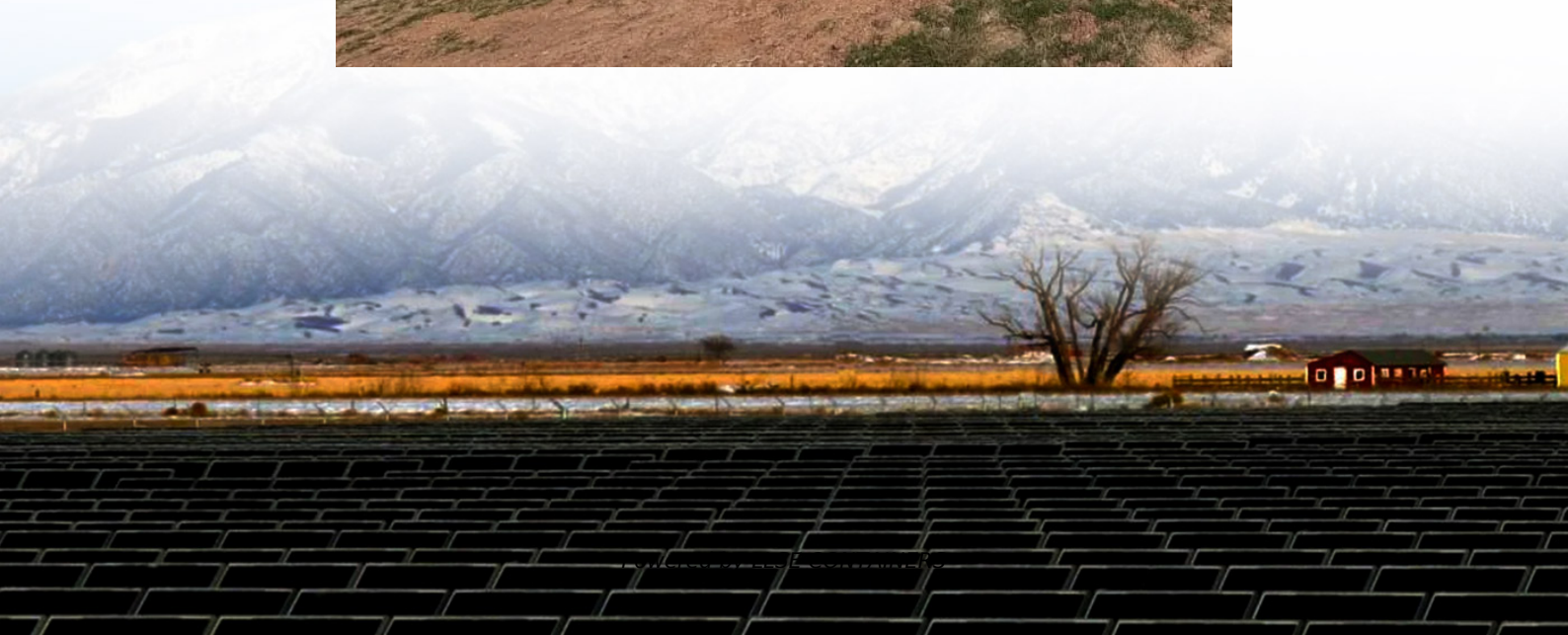


# **Put the optical cable battery to connect the base station**





## Overview

---

What is an optic USB base station?

The Optic USB Base Station allows communication between the host computer and HOBO optic loggers. The base station uses infrared light to transfer data, which allows loggers to be completely sealed and waterproof. The Optic USB Base Station converts the USB communication protocol into an infrared protocol used by the optic USB loggers.

Can I take the optical USB base station apart?

Do not take the Optic USB Base Station apart. There are no user-serviceable parts inside. This Optic USB Base Station requires HOBOWare® 2.2 or later to launch and read out data. For detailed software instructions, refer to the HOBOWare User's Guide. The Optic USB Base Station will operate at temperatures of 0° to 50°C (32° to 122°F).

What is the difference between a base station and an optic USB logger?

The base station uses infrared light to transfer data, which allows loggers to be completely sealed and waterproof. The Optic USB Base Station converts the USB communication protocol into an infrared protocol used by the optic USB loggers. A coupler is required to connect the logger to the base station.

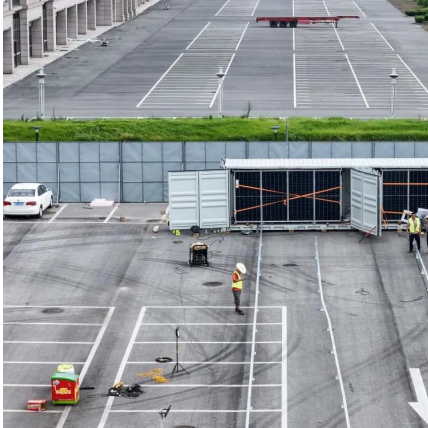
What software do I need to use the optic USB base station?

This Optic USB Base Station requires HOBOWare® 2.2 or later to launch and read out data. For detailed software instructions, refer to the HOBOWare User's Guide. The Optic USB Base Station will operate at temperatures of 0° to 50°C (32° to 122°F). The device can be safely stored at temperatures of -20° to 70°C (-4° to 158°F).



## Put the optical cable battery to connect the base station

---



### CopperHead

Dec 20, 2013 · Introduction to the Telecast CopperHead The Telecast CopperHead is a camera video, audio and data multiplexing system that installs between a portable video camera and ...

### [Optic USB Base Station BASE-U-4 , Onset's HOBO Data ...](#)

A splash-resistant base station and couplers used to offload data from any HOBO data logger with an Optic USB interface. The base station connects to your computer via USB, while ...



### [Optic USB Base Station BASE-U-4 , Onset's ...](#)

A splash-resistant base station and couplers used to offload data from any HOBO data logger with an Optic USB interface. The base station ...



### [My A50 + Base Station is not charging or will not turn ...](#)

Sep 24, 2018 · Insert the Base Station USB Power cable to the rear USB Port and connect the Optical cable to the Base Station and Xbox One optical connection located on the rear.



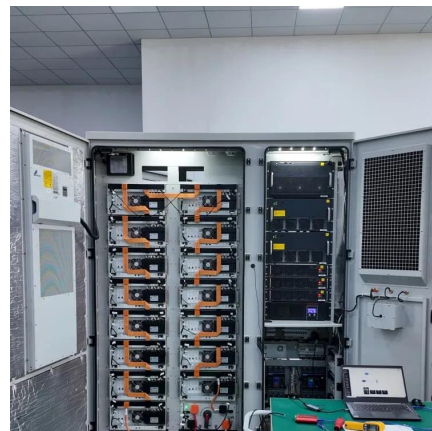
### [Maximizing Connectivity with base station cable from Weichuang Optics](#)

Sep 9, 2024 · As we navigate the complexities of fiber optic networks, the significance of base station cables, micro distribution cables, and FTTH drop cable patch cables cannot be ...



### [Optic USB Base Station \(BASE-U-4\) User's Manual](#)

5 days ago · Onset®, HOBO®, InTemp®, and all other names of Onset products referenced herein are trademarks or registered trademarks of Onset Computer Corporation. ® Onset



### [Onset BASE-U-4 Optic USB Base Station User's manual](#)

Onset BASE-U-4 is a USB communication base station for use with HOBO U-Series loggers with an optic USB interface. The Optic USB Base Station uses infrared light to transfer data, which ...





### Common ways to set up a base station

Dec 1, 2025 · Each day, mount the GNSS antenna on the GNSS end of the T-Bar and the radio antenna on the radio end of the T-Bar. Connect the antennas to the receiver using the ...



### Optic USB Base Station (BASE-U-4)

Jul 27, 2022 · The Optic USB Base Station allows communication between the host computer and HOBO optic loggers. The base station uses infrared light to transfer data, which allows loggers ...

## Contact Us

---

For catalog requests, pricing, or partnerships, please visit:  
<https://www.llsolarenergy.co.za>

**Scan QR Code for More Information**



<https://www.lsolarenergy.co.za>