

Rated power of the inverter





Overview

What is rated output power of inverter?

The rated output power of inverter is the continuous output power, which refers to the output power of the inverter under the rated voltage current. It is the power that can be continuously and stably output for a long time.

What do kW and kVA mean in inverter specifications?

kW refers to the real or usable power output of an inverter. kVA represents the total power capacity it can carry, including power lost in phase difference (reactive power). For example, an inverter rated at 10 kVA with a power factor of 0.8 can only deliver 8 kW of real power.

How much power does an inverter need?

It's important to note what this means: In order for an inverter to put out the rated amount of power, it will need to have a power input that exceeds the output. For example, an inverter with a rated output power of 5,000 W and a peak efficiency of 95% requires an input power of 5,263 W to operate at full power.

What does AC mean in a power inverter?

Nominal Voltage (AC). This indicates the nominal voltage that is output from the inverter. Rated AC Power Output (VA). This indicates the maximum AC power output from the inverter. Maximum Continuous Current Out AC (A). This indicates that maximum continuous AC current that may be output from the inverter. Peak Efficiency (%).



Rated power of the inverter



[Understanding Inverter Power Ratings: kW vs ...](#)

4 days ago · For example, an inverter rated at 10 kVA with a power factor of 0.8 can only deliver 8 kW of real power. That means if your total ...

[Inverter Specifications and Data Sheet](#)

2 days ago · The article provides an overview of inverter functions, key specifications, and common features found in inverter systems, along with an example of power calculations and ...



[Decoding Rated vs Peak Power: How It Impacts Your KickAss Inverter](#)

When researching inverters for your 12V setup, you'll likely encounter references to rated power and peak power. But what do these terms really mean? Understanding the difference will help ...



[Inverter Knowledge , The Relationship ...](#)

Apr 9, 2025 · When choosing a solar inverter, you often see two key parameters: "Maximum PV Input Power" and "Rated Power." But what's ...



[Understanding Inverter Rated Power: A Complete Guide for ...](#)

6 days ago · Conclusion Inverter rated power is a fundamental factor in designing an efficient and reliable power system. By understanding your power requirements, accounting for surge ...



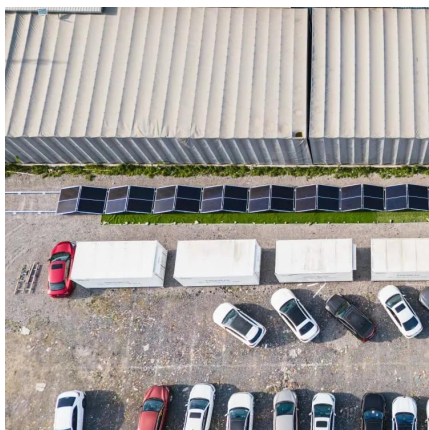
[What is the difference between rated power ...](#)

Aug 24, 2020 · The rated output power of inverter is the continuous output power, which refers to the output power of the inverter under the rated ...



[How To Read And Interpret An Inverter ...](#)

4 days ago · Inverter specifications are technical information that describes an inverter's capabilities, characteristics, and limitations. They guide ...





[Inverter Power Calculator. Formula.Inverter Calculation](#)

2 days ago · Inverter Power Calculator: Enter the values of rated inverter power, RP (W) in watts and efficiency, E to determine the value of Inverter power, P_i (W).



[Inverter Peak Power vs Rated Power: What it is and Why It...](#)

Apr 21, 2025 · The rated power is the power at which the inverter is stabilized over a long period, whereas the peak power is only used for short periods of high power demand. Learn More: ...

[Inverter Peak Power vs Rated Power: What it ...](#)

Apr 21, 2025 · The rated power is the power at which the inverter is stabilized over a long period, whereas the peak power is only used for short periods ...



[Inverter Specifications and Data Sheet](#)

2 days ago · The article provides an overview of inverter functions, key specifications, and common features found in inverter systems, along with ...



Inverter Knowledge , The Relationship Between PV Input Power & Rated Power

Apr 9, 2025 · When choosing a solar inverter, you often see two key parameters: "Maximum PV Input Power" and "Rated Power." But what's the relationship between them? ? Most inverters ...



[Definitions of Inverter Specifications](#)

Rated AC power output (V?A): This indicates the maximum AC power output from the inverter.
Maximum continuous current out AC (A): This indicates the maximum continuous AC current ...

What is the difference between rated power and peak power of inverter?

Aug 24, 2020 · The rated output power of inverter is the continuous output power, which refers to the output power of the inverter under the rated voltage current. It is the power that can be ...



[How To Read And Interpret An Inverter Specification](#)

4 days ago · Inverter specifications are technical information that describes an inverter's capabilities, characteristics, and limitations. They guide users in choosing an inverter that suits ...



[Understanding Inverter Power Ratings: kW vs kVA Explained](#)

4 days ago · For example, an inverter rated at 10 kVA with a power factor of 0.8 can only deliver 8 kW of real power. That means if your total appliance load is 10 kW, this inverter will not be ...



Contact Us

For catalog requests, pricing, or partnerships, please visit:
<https://www.llsolarenergy.co.za>

Scan QR Code for More Information



<https://www.llsolarenergy.co.za>