

Relationship between the communication line and the distance between the base station





Overview

How to determine signal strength vs distance for LTE base stations?

How to determine signal strength verses distance for LTE base stations?

All mobile phones have bars or some other type of indicator displaying signal strength. As mobile devices move away from the base station the signal strength becomes weak and at some point becomes out of range or establishes connections with a different tower.

What are the functions of a base station?

2. Antenna: The base station has one or more antennas to transmit and receive signals. Antennas are responsible for radiating the signals into the air and capturing the signals from the air. 3. Baseband processing unit: It is responsible for processing the signals received from the transceiver.

Why are base stations important in cellular communication?

Base stations are important in the cellular communication as it facilitate seamless communication between mobile devices and the network communication. The demand for efficient data transmission are increased as we are advancing towards new technologies such as 5G and other data intensive applications.

What is the difference between a radio and a base station?

A base station is usually larger and more powerful than a radio and is designed to handle multiple connections simultaneously. In telecommunications, a base station is a fixed transceiver that serves as the main communication point for one or more wireless mobile client devices.



Relationship between the communication line and the distance betw



Post-earthquake functional state assessment of communication base

Dec 1, 2024 · The reliability and resilience of communication base stations are critical to the post-earthquake performance of the communication system, and consequently influence the ...

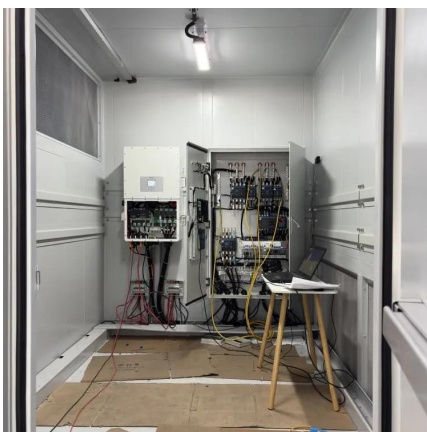
Distance Estimation Between Base Station and User

Aug 31, 2018 · We discuss the distance estimation between the base station and user terminal in wireless communications using multicarrier signal. This paper proposes a method using 4th ...



How to determine signal strength verses distance for LTE base ...

Nov 11, 2025 · As mobile devices move away from the base station the signal strength becomes weak and at some point becomes out of range or establishes connections with a different ...



Microsoft PowerPoint

Apr 15, 2008 · To reduce co-channel interference co-channel cells must be physically separated by a minimum distance to provide sufficient isolation due to propagation and the distance ...



[Base Station \(BS\) Transmitter Power Level by Cell Radius ...](#)

Dec 2, 2019 · The properties of the signal path that we consider here the distance between terminal and base station (BS), also the antenna high, base station transmitter power On ...



2 The wireless channel

Aug 29, 2014 · 2 The wireless channel A good understanding of the wireless channel, its key physical parameters and the modeling issues, lays the foundation for the rest of the book. This ...



[Impact of Transmission Distance on the Strength of Received ...](#)

Jan 1, 2014 · Work has been done to quantify the impact of line-of-sight transmission distance on radio signal intensities [15]. The Okumura model is used in [15] for modeling the cellular signal ...





Impact of Transmission Distance on the Strength of ...

Feb 4, 2014 · Results obtained with FUTA radio station is presented in Table 4 while Fig. 7 indicates the relationship that exists between signal strength and line-of-sight distance.



Understanding Base Stations: The Backbone of Wireless Communication

Jan 6, 2025 · In today's digital age, reliable and high-speed communication is more essential than ever. Whether it's for mobile phones, internet services, or IoT (Internet of Things) devices, ...

The Relationship Between Communication Distance and ...

Feb 11, 2025 · The Relationship Between Communication Distance and Transmission Rate and Antenna Height, Transmission Power, Antenna Gain, Operating Frequency and Channel ...



Reliability prediction and evaluation of communication ...

Dec 4, 2023 · Earthquake disasters can cause collapse of houses, damage to communication base stations towers and transmission lines, resulting in the disruption of communication ...



Research and Implementation of 5G Base Station ...

Oct 28, 2023 · Guoqing Chen, Xin Wang, and Guo Yang Abstract The application requirements of 5G have reached a new height, and the location of base stations is an important factor ...



Contact Us

For catalog requests, pricing, or partnerships, please visit:
<https://www.llsolarenergy.co.za>

Scan QR Code for More Information



<https://www.llsolarenergy.co.za>