

Resonant columns are used in solar container communication stations for wind and solar complementarity





Overview

This review aims to identify the available methodologies, data, and techniques for mapping the potential of solar and wind energy and its complementarity and to provide significant research and patents regarding.

What is the complementary coefficient between wind power stations and photovoltaic stations?

Utilizing the clustering outcomes, we computed the complementary coefficient R between the wind speed of wind power stations and the radiation of photovoltaic stations, resulting in the following complementary coefficient matrix (Fig. 17.).

Which cluster of wind power stations exhibit the weakest complementarity with radiation?

Analysis of the matrix reveals that the 4th, 5th, 7th, and 8th clusters of wind power stations exhibit the weakest complementarity with the radiation of photovoltaic stations. In contrast, the 5th, 7th, 8th, and 10th clusters of photovoltaic stations similarly demonstrate poor complementarity with the wind speed of wind power stations.

Do wind power and photovoltaic stations complement each other?

Typically, wind power and photovoltaic stations are situated at different locations, necessitating the study and analysis of wind speed-radiation complementarity across various regions. This study focuses on wind power stations and photovoltaic stations in Qinghai and Gansu provinces to explore their complementarity.

What is the framework for analysing climate-resilient global wind and solar power systems?

Extended Data Fig. 1 Framework for analysing strategies for climate-resilient global wind and solar power systems. The framework comprises five key components: input, model optimization, output, post-process results, and strategy design.



Resonant columns are used in solar container communication station



[High-frequency resonance in HVDC and wind ...](#)

Sep 14, 2023 · This paper presents methods to model and solve high-frequency resonance problems in HVDC and wind power systems. ...

[Wind solar complementary system: prospects of wind solar ...](#)

Wind solar complementarity refers to the seasonal and temporal complementarity between solar power generation and wind power generation, and is widely used. The following series of wind ...



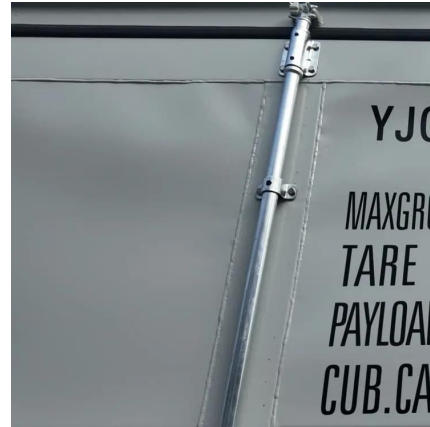
[Optimization study of wind, solar, hydro and hydrogen ...](#)

Jul 15, 2024 · Consequently, this article, targeting the current status of multi-energy complementarity, establishes a complementary system of pumped hydro storage, battery ...



[THE POWER OF SOLAR ENERGY ...](#)

May 19, 2023 · In this guide, we'll explore the components, working principle, advantages, applications, and future trends of solar energy containers. ...

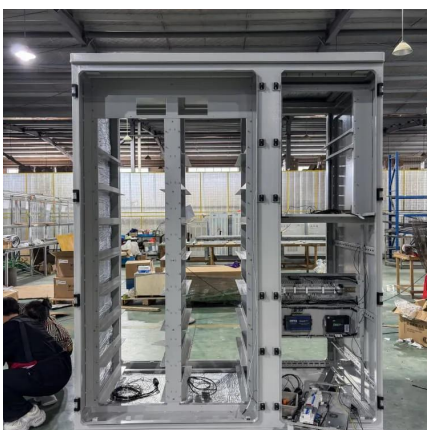
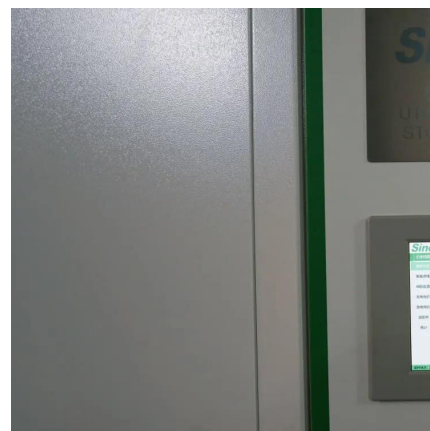


[Wind-solar technological, spatial and temporal ...](#)

Apr 1, 2024 · We find that optimal cross-country coordination of wind and solar capacities across Europe's integrated electricity system increases capacity factor by 22% while reducing hourly ...

[Solarcontainer: The mobile solar system](#)

4 days ago · This system is realized through the unique combination of innovative and advanced container technology. Our pioneering and ...



[High-frequency resonance in HVDC and wind systems: Root...](#)

Sep 14, 2023 · This paper presents methods to model and solve high-frequency resonance problems in HVDC and wind power systems. Control and digital PWM delays are identified as ...



[Review of mapping analysis and complementarity between solar and wind](#)

Nov 15, 2023 · This review aims to identify the available methodologies, data, and techniques for mapping the potential of solar and wind energy and its complementarity and to provide ...



[Small communication base station wind and solar complementarity](#)

Solution of Wind-solar Complementary Communication Power It is a new energy power supply system Mainly designed for base stations of mobile operator, can be used in scenic spots, ...



[Solar Power Supply Systems for Communication Base Stations...](#)

In today's rapidly evolving communication technology landscape, stable and reliable power supply remains crucial for ensuring the normal operation of communication networks. Especially in ...



[How to make wind solar hybrid systems for telecom stations?](#)

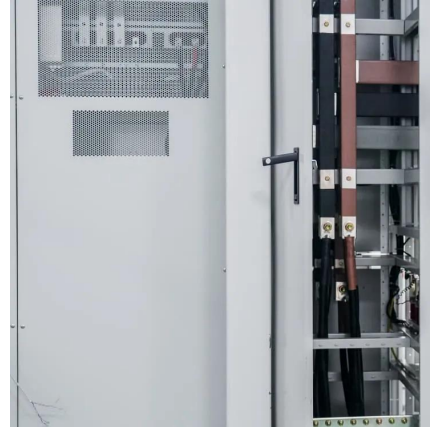
Wind solar hybrid systems can fully ensure power supply stability for remote telecom stations. Meet the growing demand for communication services.





[Wind and solar resource complementarity and its viability in wind...](#)

Jul 1, 2023 · The study majorly capitalizes on investigation of complementarity of wind and solar resources in Machakos (1°31'S, 37,0 16'E), a rural-urban town in Kenya, as a basis for proper ...

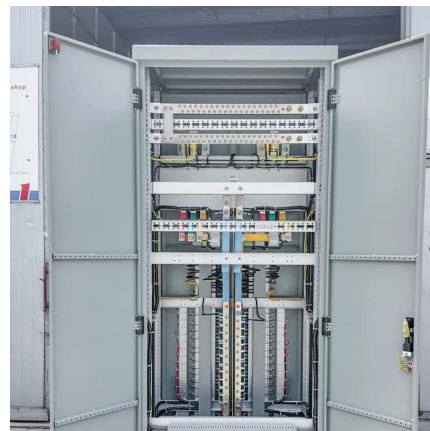


[A review of hybrid renewable energy systems: Solar and wind...](#)

Dec 1, 2023 · The review comprehensively examines hybrid renewable energy systems that combine solar and wind energy technologies, focusing on their current challenges, ...

[A copula-based wind-solar complementarity coefficient: ...](#)

Mar 1, 2025 · A measure of wind-solar complementarity coefficient R is proposed in this paper. Utilizes the copula function to settle the Spearman and Kendall correlation coefficients ...



[A review on the complementarity between grid-connected solar and wind](#)

Jun 1, 2020 · The spread use of both solar and wind energy could engender a complementarity behavior reducing their inherent and variable characteristics what would improve predictability ...



[Joint Probabilistic Forecasting of Wind and ...](#)

Apr 16, 2025 · Reliable and precise joint probabilistic forecasting of wind and solar power is crucial for optimizing renewable energy utilization and ...

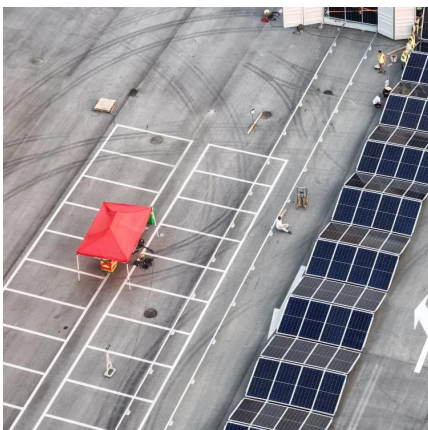


[Strategies for climate-resilient global wind and solar power ...](#)

Jun 18, 2025 · Climate-intensified supply-demand imbalances may raise hourly costs of wind and solar power systems, but well-designed climate-resilient strategies can provide help.

[Wind-solar hybrid for outdoor communication base ...](#)

4 days ago · Integrated Solar-Wind Power Container for Communications This large-capacity, modular outdoor base station seamlessly integrates photovoltaic, wind power, and energy ...



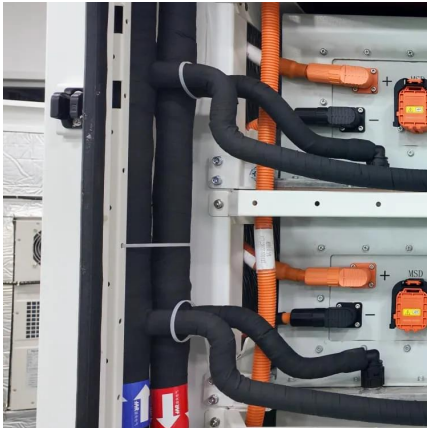
[Communication base station wind and solar ...](#)

Oct 24, 2025 · The Kendall CC, Spearman CC, and fluctuation coefficient are combined to construct a comprehensive measure of the complementarity between wind speed and ...



Wind-Solar Complementarity and Effective ...

Apr 16, 2019 · A multi-period, multi-resource optimal power flow approach is used to optimally configure wind and solar photovoltaic capacity to ...



Solar Container , Large Mobile Solar Power ...

4 days ago · Professional mobile solar container solutions with 20-200kWp solar arrays for mining, construction and off-grid applications.

Wind-Solar Complementarity and Effective Use of

Apr 16, 2019 · A multi-period, multi-resource optimal power flow approach is used to optimally configure wind and solar photovoltaic capacity to maximise energy production whilst complying ...



Contact Us

For catalog requests, pricing, or partnerships, please visit:
<https://www.llsolarenergy.co.za>



Scan QR Code for More Information



<https://www.lsolarenergy.co.za>