

# **Rooftop base station communication equipment**





## Overview

---

What is a rooftop Telecom Tower?

Rooftop telecom towers, often called rooftop cell towers or roof top antenna towers, are specialized structures installed on building rooftops to support antennas and equipment for wireless communication. Typically ranging from 3 to 30 meters in height, these towers use hot-dip galvanized steel (ASTM A123) for over 30 years of durability.

What is a rooftop tower?

A Rooftop Tower is a steel supporting structure installed on building rooftops for telecommunications equipment. These towers serve as mounting platforms for antenna arrays, microwave dishes, and other communication systems while requiring less height than ground-based towers, making them cost-effective solutions for urban deployments.

What is a rooftop antenna tower?

Roof top antenna towers facilitate radio, TV, and Wi-Fi signal transmission. In Chicago, rooftop antennas support local TV broadcasting, leveraging telecom rooftop towers for reliable signal delivery. Rooftop telecommunication towers provide last-mile connectivity for wireless internet service providers (WISPs) and utilities.

Why should you choose a telecommunication rooftop tower?

The towers are designed for easy maintenance and future network expansions, allowing for quick upgrades without extensive modifications. Reliable and efficient Telecommunication Rooftop Towers designed for urban networks, offering stable support for 4G, 5G, and equipment.



## Rooftop base station communication equipment

---



### [Understanding Rooftop Telecom Towers: Types and ...](#)

Jul 22, 2025 · Rooftop telecom towers, often called rooftop cell towers or roof top antenna towers, are specialized structures installed on building rooftops to support antennas and equipment for ...

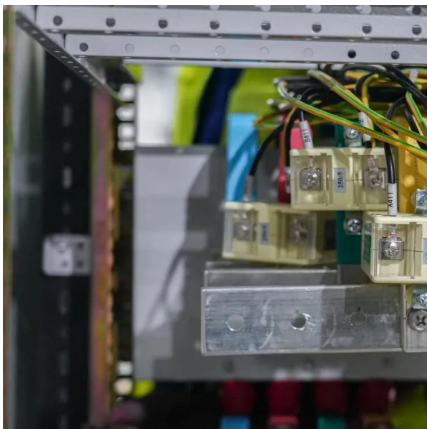
### [Rooftop tower base station: the 'invisible communication ...](#)

Jan 7, 2025 · What is the rooftop tower base station? From a high altitude in the city, the tower base stations on rooftops resemble steel guardians standing at the top of various buildings. It ...



### [Rooftop Telecom Towers,Rooftop Antenna Towers,Tower ...](#)

Rooftop telecommunication towers are elevated structures installed on the rooftops of buildings to host antennas, transceivers, and other equipment essential for wireless communication ...



### [DeltaTower - Lightweight towers. Innovative Rooftop ...](#)

DeltaTower designs, manufactures and installs lightweight towers, as a unique range of non-penetrating rooftop antenna mounting solutions for telecom network operators, equipment ...



### ROOFTOP RADIO BASE STATIONS - AzerCaspicom

Our Rooftop Base Stations are also like the other type of towers custom designed to ensure the clients requirements. The rooftops are mostly designed with angular steel basis structure and ...

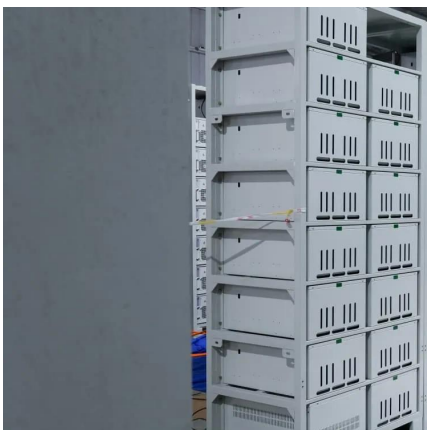
## **What is A Rooftop Tower?**

Jul 16, 2024 · A rooftop tower, also known as a rooftop base station or rooftop site, refers to a telecommunication tower or antenna system that is installed on the rooftop of a building or ...



### Telecommunication Rooftop Tower for Reliable Signal Boost

Dec 2, 2025 · Telecommunication Rooftop Tower  
Our Telecommunication Rooftop Towers deliver efficient and space-saving solutions for network expansions. Built with high-strength steel and ...





## Contact Us

---

For catalog requests, pricing, or partnerships, please visit:  
<https://www.llsolarenergy.co.za>

### Scan QR Code for More Information



<https://www.llsolarenergy.co.za>