

# Single-phase bridge square wave inverter





## Overview

---

A single-phase full bridge inverter is a switching device that generates a square wave AC voltage in the output on the application of DC voltage in the input by adjusting the switch ON and OFF. What is a single phase full bridge inverter?

Single Phase Full Bridge Inverter is basically a voltage source inverter. Unlike Single Phase Half Bridge Inverter, this inverter does not require three wire DC input supply. Rather, two wire DC input power source suffices the requirement. The output frequency can be controlled by controlling the turn ON and turn OFF time of the thyristors.

What is square wave switching in a bridge inverter?

In the method of square wave switching the inverter switch conducts for half cycle of the output frequency. In addition, the voltage reaches its highest value of peak,  $(4/\pi) V_{dc}$ . By contrast, the waveform of the load current worsens, Figure 4.11. Figure 4.11. Waveforms of voltage and current in a bridge inverter by square wave switching mode.

What is a single phase inverter?

Inverter Circuit: A circuit which is used to convert the specified voltage or frequency range with the combining of converter and inverter, it consist of electric switches such as thyristors and transistors. Single phase inverters are classified into two types. They are : Basically there are three types of waveform of the single phase inverter:.

What is a square wave type voltage source inverter?

A single-phase square wave type voltage source inverter produces square shaped output voltage for a single-phase load. Such inverters have very simple control logic and the power switches need to operate at much lower frequencies compared to switches in some other types of inverters.



## Single-phase bridge square wave inverter

---



### [AN-CM-270 Design and Implementation of a Single ...](#)

Sep 30, 2025 · In this application note, we have implemented a Single-Phase Inverter using Square Wave and Quasi Square Wave control strategies using a GreenPAK IC. GreenPAK ...

### [Simulation and Design of A Single Phase Inverter with ...](#)

Oct 27, 2025 · The square-wave inverter The simplest switching scheme for the full-bridge converter produces a square wave output voltage. The switches connect the load to VDC for ...

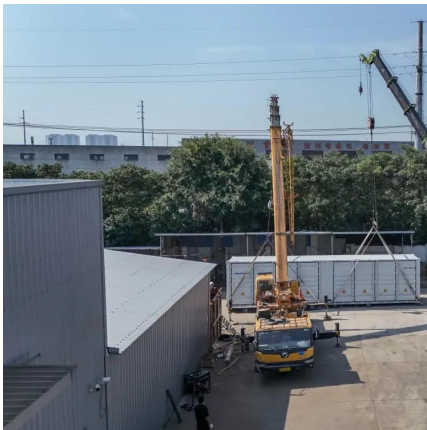


### [Simulation and Design of A Single Phase Inverter with Digital PWM](#)

Aug 29, 2020 · Abstract The current paper has as major purpose the design of a single-phase inverter for educational purposes. This project has the aim to use Arduino board to ease the ...

## Single Phase Inverter

Jul 23, 2025 · Half bridge inverter Full bridge inverter Basically there are three types of waveform of the single phase inverter: Square wave inverter Modified Sine wave inverter Pure sine wave ...



### [Single Phase Full Bridge Inverter \(Square Wave Output\)](#)

Jun 12, 2021 · Single Phase Full Bridge Inverter (Square Wave Output) Circuit Diagram of Single Phase Full Bridge Inverter (Square Wave Output) : A single phase bridge inverter is shown in ...

### [Single Phase Full Bridge Inverter Explained](#)

Circuit Diagram of Single Phase Full Bridge Inverter  
Working Principle of Single Phase Full Bridge Inverter  
Comparison Between Half & Full Bridge Inverters  
The working principle of single phase full bridge inverter is based on the sequential triggering of thyristors placed diagonally opposite. This means, for half of time period, thyristors T3 & T4 will be triggered while for the remaining half of time period, T1 & T2 will be triggered. Only two thyristors are turned ON in half of the time period. Car See more on electricalbaba Renesas Electronics Corporation[PDF]



### **AN-CM-270 Design and Implementation of a Single ...**

Sep 30, 2025 · In this application note, we have implemented a Single-Phase Inverter using Square Wave and Quasi Square Wave control strategies using a GreenPAK IC. GreenPAK ...



### [Full Bridge Inverter - Circuit, Operation, Waveforms & Uses](#)

2 days ago · What is a Full Bridge Inverter ? Full bridge inverter is a topology of H-bridge inverter used for converting DC power into AC power. The components required for conversion are two ...

### [Single Phase Full Bridge Inverter Explained](#)

Aug 3, 2020 · This article explains Single Phase Full Bridge Inverter, circuit diagram, various relevant waveforms & comparison between half and full bridge inverters.



### [Single Phase Full Bridge Inverter](#)

A single-phase square wave type voltage source inverter produces square shaped output voltage for a single-phase load. Such inverters have very simple control logic and the power switches ...

### [Full Bridge Inverter: Circuit, Waveforms, Working And ...](#)

Jun 2, 2025 · A single-phase full bridge inverter is a switching device that generates a square wave AC voltage in the output on the application of DC voltage in the input by adjusting the ...





## Contact Us

---

For catalog requests, pricing, or partnerships, please visit:  
<https://www.llsolarenergy.co.za>

### Scan QR Code for More Information



<https://www.llsolarenergy.co.za>