

Solar container lithium battery pack in Rotterdam the Netherlands





Overview

Why is SK TES opening a battery recycling facility in Rotterdam?

SK tes (earlier known as TES) has opened a battery recycling facility in the Netherlands as part of its strategy of developing a global network of such sites. The new plant in Rotterdam is being called a significant milestone towards providing closed-loop solutions essential for the burgeoning electric vehicle (EV) industry.

Why is Rotterdam launching a new battery recycling plant?

The new plant in Rotterdam is being called a significant milestone towards providing closed-loop solutions essential for the burgeoning electric vehicle (EV) industry. With the demand for battery production materials outstripping supply, it is a circular investment in the future of battery recycling.

Where can SK TES recycle EV batteries?

In addition to Rotterdam, SK tes is developing battery recycling capacity in Southern and Eastern Europe. In Asia, SK tes recently completed an EV battery recycling plant in Yancheng, China and plans to complete an EV waste battery recycling operation in Newcastle, Australia, later this year.

What's new at the EV recycling facility in Rotterdam?

We proudly hosted the grand opening ceremony of its new state-of-the-art battery recycling facility in Rotterdam. The event marked a significant milestone in the company's commitment to advancing sustainable solutions in the electric vehicle (EV) industry.



Solar container lithium battery pack in Rotterdam the Netherlands



[Pack lithium battery factory in Rotterdam the Netherlands](#)

Will the Netherlands be able to recycle lithium-ion batteries? t in the Netherlands for recycling lithium-ion batteries. In the next few years,the number of electric vehicles will be growing ...

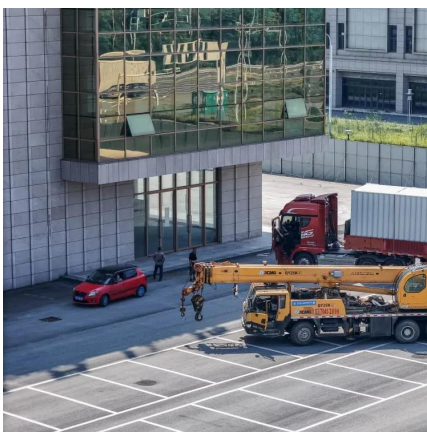
[SK tes launches electric vehicle battery recycling plant at ...](#)

Sep 12, 2024 · SK tes, an international battery recycling company, is launching a new facility at the Port of Rotterdam dedicated to recycling spent lithium batteries, electric vehicle batteries, ...



SK tes Opens Cutting-Edge Battery Recycling Facility in the Netherlands

Sep 12, 2024 · SK tes will provide end-of-life battery management solutions to meet the demand for recycling services driven by this growth using the Rotterdam waste battery recycling plant ...



[New SK Tes Battery Recycling Facility Opens in Netherlands](#)

Sep 9, 2024 · The newly established Rotterdam facility signifies a significant investment in meeting the needs of the electric vehicle (EV) and battery production markets. September 9, ...



[Large Capacity Outdoor Power Supply Batteries in Rotterdam ...](#)

SunContainer Innovations - Summary: As Rotterdam positions itself as Europe's renewable energy hub, large capacity outdoor batteries are becoming critical for port operations, urban ...



[SK Tes opens lithium battery recycling plant in Rotterdam](#)

Sep 5, 2025 · SK Tes has opened a new plant to recycle lithium-ion batteries from electric vehicles (EVs) in the port of Rotterdam. The company, which specialises in recycling used ...



[SK tes commissions Dutch lithium battery recycling plant](#)

Nov 21, 2024 · Singapore-based SK tes has opened a new lithium battery recycling plant in Rotterdam, the Netherlands. The plant has initial capacity to process 10,000 tons of EV ...





[Rotterdam facility is latest big step for SK tes](#)

Sep 11, 2024 · SK tes (earlier known as TES) has opened a battery recycling facility in the Netherlands as part of its strategy of developing a global network of such sites. The new plant ...



[Grand Opening of SK Tes' Battery Recycling Facility in Rotterdam](#)

Oct 10, 2024 · We proudly hosted the grand opening ceremony of its new state-of-the-art battery recycling facility in Rotterdam. The event marked a significant milestone in the company's ...

Contact Us

For catalog requests, pricing, or partnerships, please visit:
<https://www.llsolarenergy.co.za>

Scan QR Code for More Information



<https://www.llsolarenergy.co.za>