

# **Solar container lithium battery pack self-discharge rate**





## Overview

---

They can have a self - discharge rate of around 1 - 2% per month. This is one of the reasons why they're so widely used. They can hold their charge for a relatively long time when not in use. How does self-discharge affect the performance of lithium-ion batteries?

Self-discharge rates can have significant implications for the performance of lithium-ion batteries: Reliability: For applications where reliability is crucial, such as medical devices or emergency backup systems, higher self-discharge rates can compromise performance.

What is the self-discharge rate of a lithium ion battery?

For lithium-ion batteries, the self-discharge rate is generally low compared to other battery chemistries, such as nickel-cadmium or lead-acid batteries. However, even a small self-discharge can have implications for applications requiring reliable power sources. Factors Influencing Self-Discharge Rates.

Do all batteries have a self-discharge rate?

All batteries experience some level of self-discharge, but the rate at which it occurs can vary significantly among different types of batteries. For lithium-ion batteries, the self-discharge rate is generally low compared to other battery chemistries, such as nickel-cadmium or lead-acid batteries.

Why do lithium ion batteries have low self-discharge rates?

Keeping batteries at lower charge levels, around 40%-60% state of charge, diminishes degradation reactions, contributing to lower self-discharge rates during prolonged storage periods. Battery age As lithium-ion batteries age, the degradation of internal components such as electrodes and electrolytes leads to higher self-discharge rates over time.



## Solar container lithium battery pack self-discharge rate



### [Battery self discharge - an essential guide ...](#)

1 day ago · Batteries, the power source for devices, have an often overlooked characteristic - self-discharge. Whether it's the AA batteries in your ...

### [Li-Ion Battery Self Discharge Rate Explained](#)

Jan 4, 2024 · The self-discharge rate of Li-ion batteries stands as a pivotal factor influencing their performance and longevity. This article dives deep ...



### **What is the self**

May 27, 2025 · At our company, we offer a range of high - quality solar batteries, including the Solar Battery Powerwall 2.56Kwh Lifepo4 Pack, 51.2V 200Ah LiFePO4 Floor Type Power ...

### [Lithium-Ion Battery Self-Discharge: Causes](#)

Mar 4, 2025 · Learn what causes lithium-ion battery self-discharge, how to calculate the K-value, and discover proven strategies to minimize ...





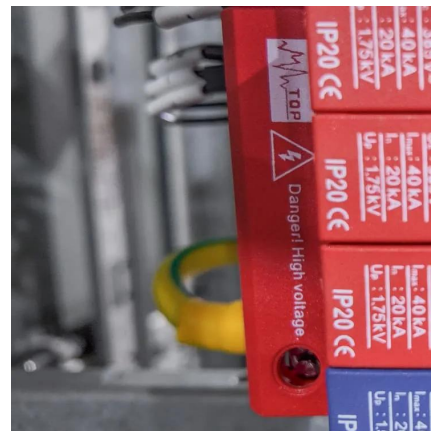
### [Technical Specifications of Battery Energy ...](#)

Factors such as temperature and charge level can influence the self-discharge rate, but it mainly depends on the technology: Lithium-ion ...



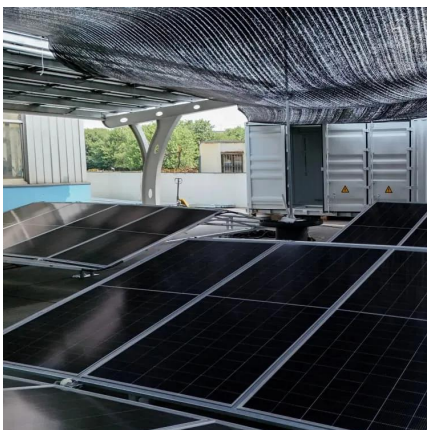
### [About Self-discharge of Lithium ion Solar Batteries](#)

Oct 24, 2025 · What Is The Self-discharge of Lithium ion Solar Batteries? Self-discharge of lithium ion solar batteries is a normal chemical phenomenon, which refers to the loss of charge of a ...



### [Fast method for calibrated self-discharge measurement of lithium ...](#)

Nov 1, 2023 · The self-discharge rate is an important parameter to assess the quality of lithium-ion batteries (LIBs). This paper presents an accurate, efficient, and comprehensive method for ...





### [Self-Discharge Rates in Lithium-Ion Batteries: ...](#)

Oct 23, 2024 · Conclusion Self-discharge rates play a crucial role in the performance and reliability of lithium-ion batteries. Understanding the ...



### [Lithium-ion Battery Technologies for Grid-scale Renewable ...](#)

Jun 1, 2025 · As these nations embrace renewable energy generation, the focus on energy storage becomes paramount due to the intermittent nature of renewable energy sources like ...

### [Li-Ion Battery Self Discharge Rate Explained](#)

Jan 4, 2024 · The self-discharge rate of Li-ion batteries stands as a pivotal factor influencing their performance and longevity. This article dives deep into the realm of Li-ion battery self ...



### [A Guide to Understanding Battery Specifications](#)

Dec 18, 2008 · A battery is a device that converts chemical energy into electrical energy and vice versa. This summary provides an introduction to the terminology used to describe, classify, ...



### [A complete analysis of lithium battery self-discharge rate](#)

May 23, 2025 · The self-discharge rate of lithium batteries is usually 2%-5% per month, which is one of the key indicators of battery performance. Self-discharge directly affects battery ...



### [Self-discharge rate of lithium ion battery.portable solar ...](#)

Self-discharge rate of lithium ion battery.portable solar power station The self-discharge rate, also known as the power maintenance capacity, refers to the ability to maintain the battery ...

### [A complete analysis of lithium battery self ...](#)

May 23, 2025 · The self-discharge rate of lithium batteries is usually 2%-5% per month, which is one of the key indicators of battery performance. Self ...



### **Research on a fast detection method of self-discharge of lithium battery**

Nov 1, 2022 · The aging of lithium battery is a natural phenomenon in the process of utilization. The consistency becomes worse gradually during aging, and the consistency of each cell in ...





## What is the self

Jun 9, 2025 · If the charge is getting low, recharge it using your portable solar panel. In conclusion, understanding the self - discharge rate of the battery used with a portable solar ...



## What is the self

Sep 25, 2025 · Lithium - ion batteries, which are quite popular in container energy storage systems, generally have a relatively low self - discharge rate. They can have a self - discharge ...



## [Modeling Self-Discharge vs Temperature for Portable Solar](#)

Aug 26, 2025 · Slash portable solar self-discharge with temperature modeling. Apply Q10 math, real data, and solar panel temperature effects to cut standby losses fast.



## [BU-802b: What does Elevated Self-discharge ...](#)

Nov 2, 2021 · The amount of electrical self-discharge varies with battery type and chemistry. Primary cells such as lithium-metal and alkaline retain the ...





### [Li-Ion & LiPo Battery Storage Recommendations](#)

Nov 19, 2024 · The rate of self-discharge for Li-Ion and LiPo batteries can vary between 1-2 percent per month, with a 5 percent rate within the first 24 hours. Smart packs will have a ...

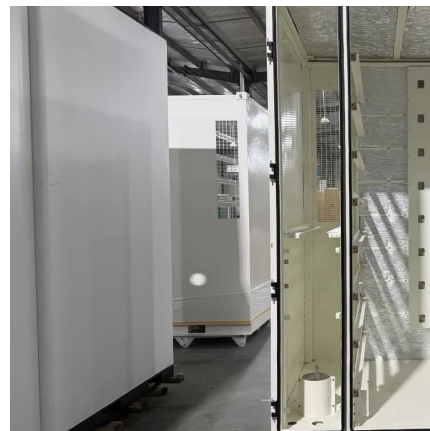


### [Self-Discharge Rates in Lithium-Ion Batteries: How They ...](#)

Oct 23, 2024 · Conclusion Self-discharge rates play a crucial role in the performance and reliability of lithium-ion batteries. Understanding the factors influencing self-discharge and its ...

### [1MW Battery Energy Storage System](#)

Oct 7, 2025 · Each commercial and industrial battery energy storage system includes Lithium Iron Phosphate (LiFePO<sub>4</sub>) battery packs connected in high voltage DC configurations ...



### [Exploring self-discharge characteristics of lithium-ion batteries](#)

Feb 28, 2025 · This temperature drop reduced the self-discharge rate of the G 1 -2 sample battery and highlighted the relaxation effect, which is observed as a sudden increase in external ...





## Contact Us

---

For catalog requests, pricing, or partnerships, please visit:  
<https://www.llsolarenergy.co.za>

### Scan QR Code for More Information



<https://www.llsolarenergy.co.za>