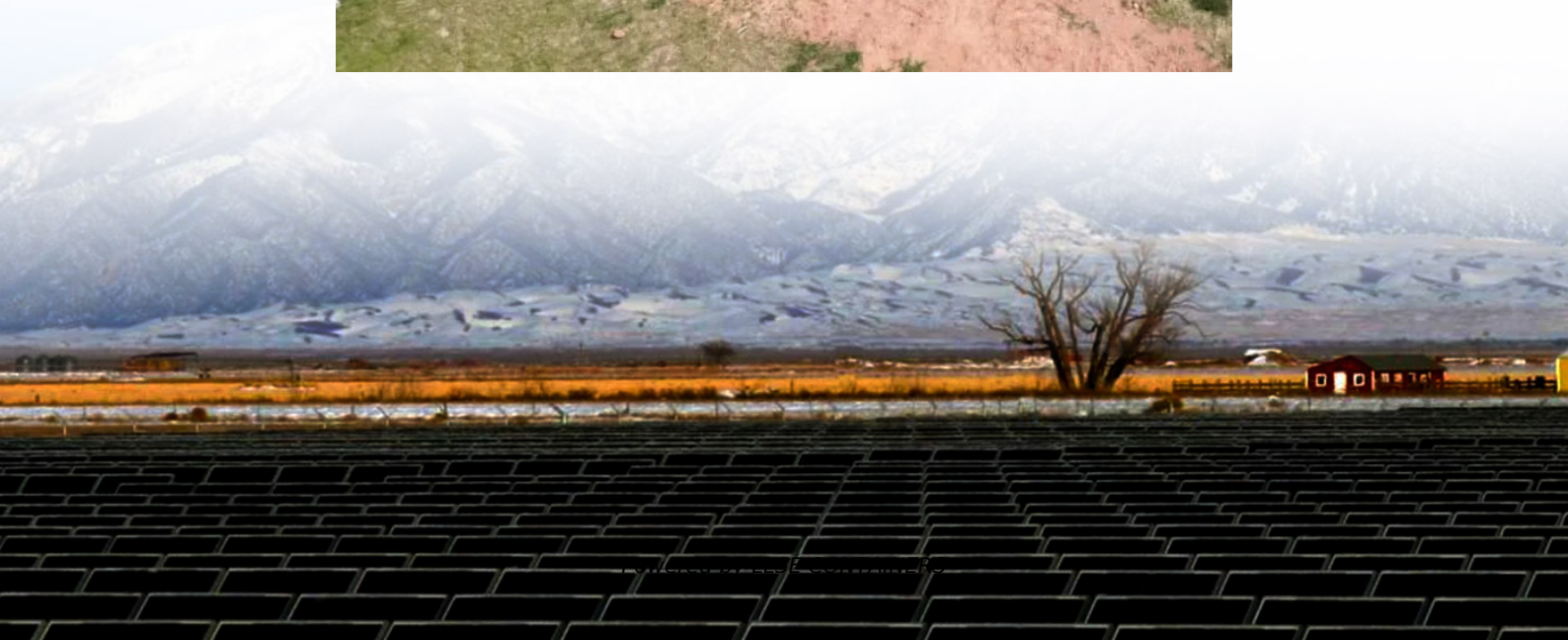


Solar container lithium battery pack slow charging





Overview

Why do lithium ion batteries take so long to charge?

Their ability to hold a charge diminishes as they age, leading to slower charging speeds. Temperature Sensitivity: Lithium-ion batteries are sensitive to temperature extremes. Charging in excessively hot or cold conditions can affect the chemical reactions within the battery, slowing down the charging process.

What happens if a solar battery is undercharged?

When a battery receives too little energy, it undercharges, often due to insufficient solar input, poor solar panel performance, or an improper charging setup. Undercharged batteries can lead to reduced functionality, shorter lifespan, voltage drops, and energy shortages, ultimately affecting your power supply and system efficiency.

Why are lithium ion batteries so hard to charge?

Temperature Sensitivity: Lithium-ion batteries are sensitive to temperature extremes. Charging in excessively hot or cold conditions can affect the chemical reactions within the battery, slowing down the charging process. Internal Resistance: Due to wear and tear, internal resistance within a lithium-ion battery can increase over time.

How to prevent overcharging a solar battery?

To prevent overcharging, using high-quality solar charge controllers that automatically regulate the charging process based on the battery's status is essential. Additionally, regularly checking and calibrating the BMS ensures that it continues to function optimally.



Solar container lithium battery pack slow charging



[Fixing Slow Charging Issues in Lithium-Ion Devices](#)

Dec 5, 2025 · Correct slow charging problems in lithium-ion devices by troubleshooting common issues--discover how to restore fast charging and keep your device powered efficiently.

[Why Your Lithium Battery Isn't Charging from Solar -- And ...](#)

Jul 14, 2025 · When your lithium battery isn't charging from your solar panel setup, it can be frustrating, especially if you're off-grid or camping. This guide covers common reasons your ...



[Why is my LiFePo4 pack charging slowly?](#)

May 11, 2020 · The normal charge is at first constant current, then once the voltage is at the charge level, the current starts dropping off. What is your battery voltage when it is charging ...

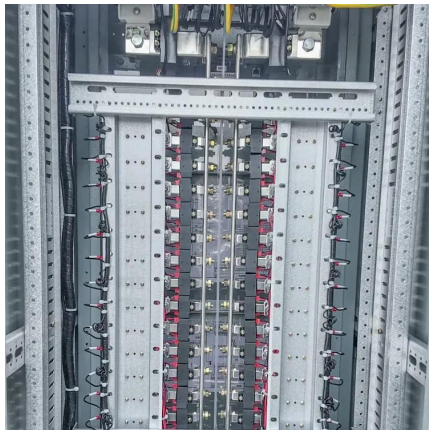
[Lithium Battery Troubleshooting: Fix Charging & Common ...](#)

Mar 30, 2025 · Discover effective Lithium Battery Troubleshooting. Learn how to fix charging issues, low voltage errors, and BMS faults. Trusted tips from Muller Energy NSW.



[Why Won't My Solar Battery Charge: Common Causes and ...](#)

Jan 4, 2025 · Struggling with solar battery charging issues? Our article dives into the common culprits behind these frustrations, from battery age to environmental factors like temperature ...



[Data-Backed Reasons Portable Solar Charging Slows Down](#)

Aug 28, 2025 · Bob Wu is a Solar Engineer at Anern specializing in lithium battery and energy storage systems. With over 15 years of experience, he designs and optimizes sustainable ...



[How to Charge Your Battery Using Solar Power](#)

Jul 19, 2025 · Key Takeaways Use the right solar panels, MPPT charge controller, and quality cables to safely and efficiently charge lithium battery packs with solar power. Follow step-by ...





Contact Us

For catalog requests, pricing, or partnerships, please visit:
<https://www.llsolarenergy.co.za>

Scan QR Code for More Information



<https://www.llsolarenergy.co.za>