

Solar glass t value y value





Overview

What is the difference between g-value and solar factor?

On the other hand, the Solar Factor (known as the 'g-value' or Solar Heat Gain Coefficient, SHGC) indicates the amount of heat energy the glazing will allow into the building in relation to the energy it receives as solar radiation. What is the customization range available for the Solar Factor (g-value) in Onyx Solar glass?

.

What G-value should a Photovoltaic Glass have?

Photovoltaic glass can be customized to achieve a solar factor between 6% and 41%. A low g-value is desirable to prevent overheating, especially in warm climates, as it prevents the interior temperature from rising too high due to the greenhouse effect.

Why should you choose Onyx Solar Photovoltaic Glass?

The multifunctional properties of photovoltaic glass surpass those of conventional glass. Onyx Solar photovoltaic glass can be customized to optimize its performance under different climatic conditions. The solar factor, also known as "g-value" or SHGC, is key to achieve thermal comfort in any building.

What is a U value in glass?

U Value (Insulation) - This is a measure of heat transfer through the glass due to thermal conductance and the differential between interior and exterior environments and temperatures. Single clear glass has a U value of about 6 and IGU about 3, a Low E IGU about 2 and a very high performance IGU about 1.



Solar glass t value y value

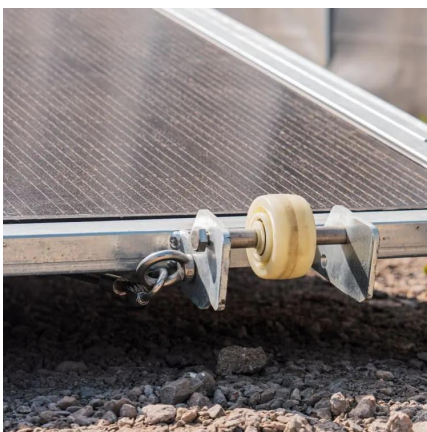


[Measuring glazing performance in a building](#)

Mar 27, 2025 · Measuring glazing performance: key concepts Measuring glazing performance: key concepts Glazing performance is typically measured according to U-value, R-value and ...

[Technical properties of Onyx Solar Photovoltaic Glass](#)

5 days ago · The multifunctional properties of photovoltaic glass surpass those of conventional glass. Onyx Solar photovoltaic glass can be customized to optimize its performance under ...



[Photovoltaic Glass Treatments: Clarifying Terminologies and ...](#)

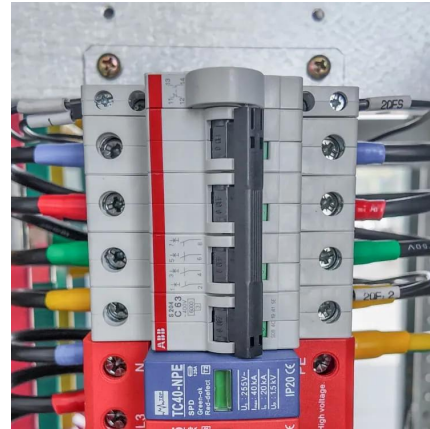
Different treatments can enhance the mechanical performance of glass, particularly in terms of static load resistance (measured in Pascals) and hail resistance (as per IEC 61215, ...

[Glass Performance , Thermosash Building Envelope Solutions](#)

A low reflectance value could be around 10% as clear float glass is 9% with specialist shop front or car showrooms as low as 1%. Higher reflectance glasses help to reduce VLT and solar



gain ...



Understanding Glass Performance Key Metrics

6 days ago · Understanding glass performance key metrics like VLT, SHGC, LSG, SC, U-Value, and R-Value enables informed decisions for energy-efficient and comfortable spaces.

Energy Technical Information

Jun 13, 2023 · This section shows how glass is used to mitigate the harsh effects of climate in which we live. It will however in most cases limit the discussion to glass only. Performance ...



Key Glass Performance Measures

Oct 10, 2024 · This value measures the ability of the glass to transmit light and facilitate daylighting. Solar Heat Gain Coefficient (SHGC)
Solar heat gain coefficient (SHGC) is the ...



Solar Factor: What It Is and How to Calculate It

Feb 21, 2025 · The main values in the choice of glass are thermal transmittance, light transmittance, and the solar factor. The solar factor g is the ratio between the solar energy that ...



Contact Us

For catalog requests, pricing, or partnerships, please visit:
<https://www.llsolarenergy.co.za>

Scan QR Code for More Information



<https://www.llsolarenergy.co.za>