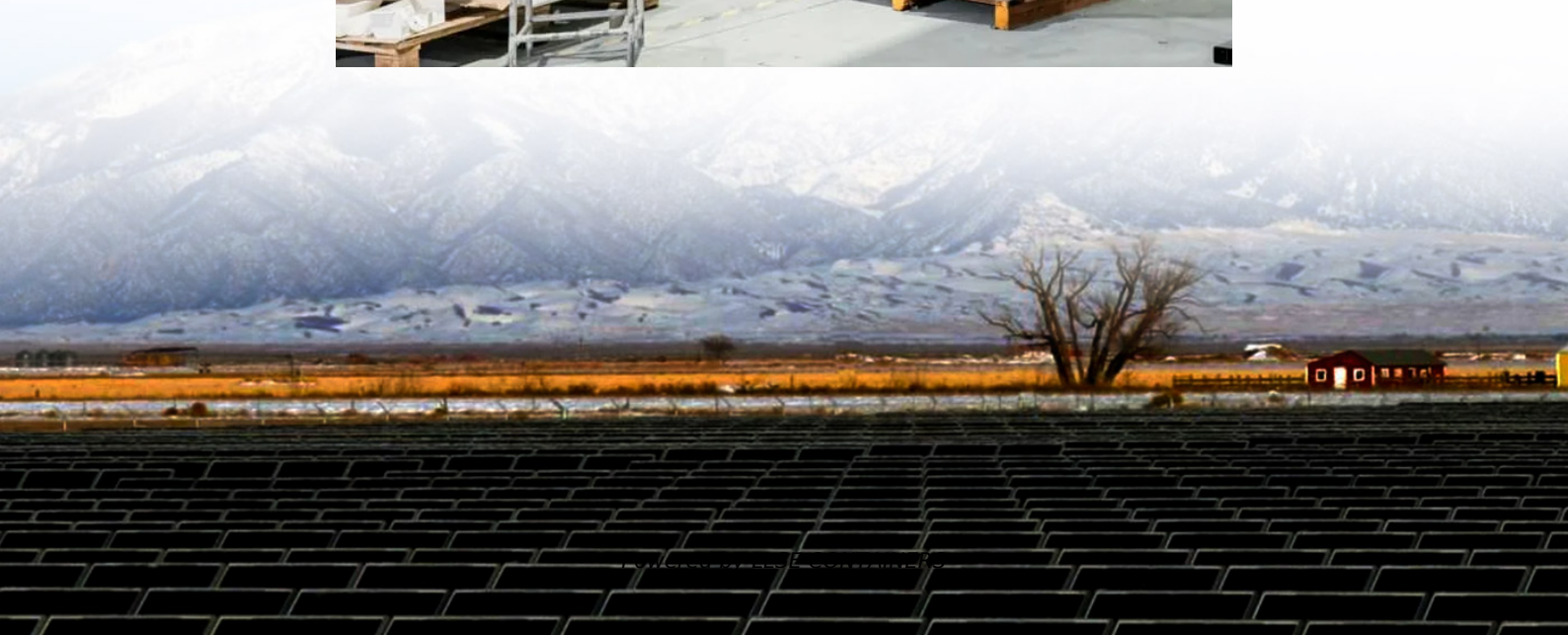


Solar inverter enterprise working hours





Solar inverter enterprise working hours



What percentage of inverter capacity can you run ...

Apr 5, 2021 · Like all electronics, the higher load or duty cycle will work but usually affects the lifespan of the device. That being said, I don't see a problem with running at 50%. Are you ...

Can Solar Inverter Run 24 Hours?

Jun 20, 2023 · Solar energy technology is becoming increasingly popular for homes and businesses worldwide due to its renewable and environmentally friendly nature. A vital ...



Can an inverter run 24 hours a day

May 17, 2024 · Can you run a solar inverter for 24 hours a day and still expect 99 per cent efficiency? With many factors in play, let's see if longevity is really the case with solar inverters

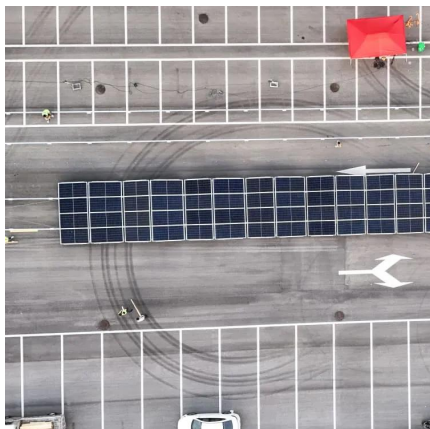
Inverter Runtime: Can It Run 24/7? Discover the Truth! -- ...

May 21, 2024 · Curious if your inverter can run 24 hours a day? Find out the facts about inverter runtime, efficiency, and maintenance to keep it running smoothly without issues.



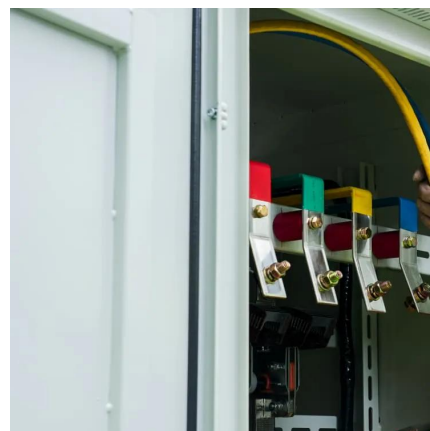
[How Long Will My Inverter System Last in a Day? Here's](#)

Sep 13, 2024 · The type of inverter used in your solar energy system plays a significant role in determining how long the system can last on any given day. Inverters come in various types, ...



[Should solar inverter be on all the time](#)

Sep 12, 2024 · In addition, each inverter type offers unique benefits that cater to specific residential or commercial energy needs. By selecting the right inverter for your solar setup, ...



[Does a Solar Inverter Run Continuously? What Happens If It ...](#)

A solar inverter can operate all day or 24 hours a day, depending on the system design and usage scenario. However, "constant operation" does not always mean the inverter is at full ...





Contact Us

For catalog requests, pricing, or partnerships, please visit:
<https://www.llsolarenergy.co.za>

Scan QR Code for More Information



<https://www.llsolarenergy.co.za>