

Solar panel internal system





Overview

Most panels include solar cells, tempered glass, encapsulant, a backsheet, a metal frame, an inverter, and a junction box. What is a solar panel system?

A solar panel system is a renewable energy system that converts sunlight into electricity. It consists of several components, including solar panels, an inverter, and a controller. Solar panels, also known as photovoltaic (PV) panels, are made up of cells that generate electric current when exposed to sunlight.

What are the components of a solar panel?

Understanding the components of a solar panel empowers informed decision-making when selecting photovoltaic systems. Each component—from photovoltaic cells and protective glass to frames and junction boxes—contributes to overall system performance, reliability, and longevity. Key considerations for component selection include:

What is a solar panel mounting structure?

Within the components that make up a photovoltaic system, the structures of the photovoltaic panels are passive components that facilitate the installation of the solar PV modules. Solar mounting structures must constantly withstand outdoor weather conditions. The solar panel mounting structure fixes its position and stays stable for years.

Do solar panels have inverters?

Solar panels generate direct current (DC) electricity, but your home runs on alternating current (AC). An inverter's job is to convert DC electricity into usable AC, so your solar system can power your home's lights, appliances, and more. While inverters aren't a part of the panel's physical construction, they're a critical component.



Solar panel internal system

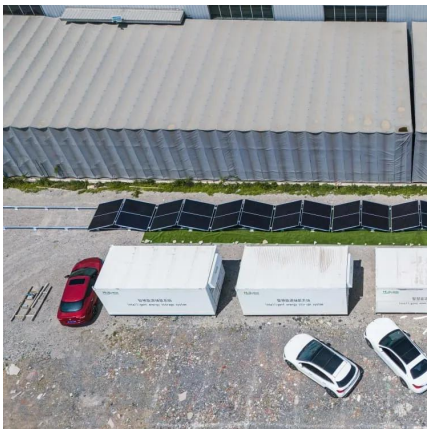


[The Ultimate Solar Panel System Schematic Diagram: A ...](#)

Discover the components and layout of a solar panel system through a detailed schematic diagram. Learn how solar panels, inverters, batteries, and other essential components work ...

[Solar panel components, the structure of PV panels](#)

Feb 25, 2016 · 7. Solar panel stand Within the components that make up a photovoltaic system, the structures of the photovoltaic panels are passive components that facilitate the installation ...



[Components of a Solar Panel: Complete Technical Guide](#)

Aug 25, 2025 · Solar panel adoption has reached unprecedented levels in 2025, with over 3.2 million residential installations across the United States alone. As photovoltaic technology ...

[The Inner Workings Of A Solar Panel](#)

Mar 23, 2025 · If the panel isn't tied to the grid--like in a cabin or a boat--the inverter still makes AC for appliances, or sometimes the system stays DC for things like batteries. Either way, the ...



[Solar panel components: A complete guide to every part](#)

Aug 27, 2025 · Solar panels generate direct current (DC) electricity, but your home runs on alternating current (AC). An inverter's job is to convert DC electricity into usable AC, so your ...



[Internal Structure of Solar Panel](#)

Sep 27, 2023 · A solar panel, also known as a photovoltaic (PV) panel, is a device that converts sunlight into electrical energy through a process called the photovoltaic effect. Solar panels ...



[Solar Panel Structure: What You Need to Know , Home](#)

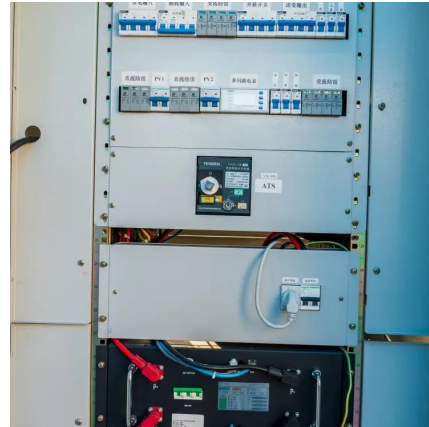
Jul 20, 2024 · The frame ensures the panel can withstand wind, snow, and other external forces. Protection: The frame acts as a barrier, safeguarding the delicate internal components of the ...





[What does a solar panel look like inside? , NenPower](#)

Sep 14, 2024 · Understanding the internal structure of a solar panel involves fascination and complexity. 1. Inside a solar panel, the central components include photovoltaic ...

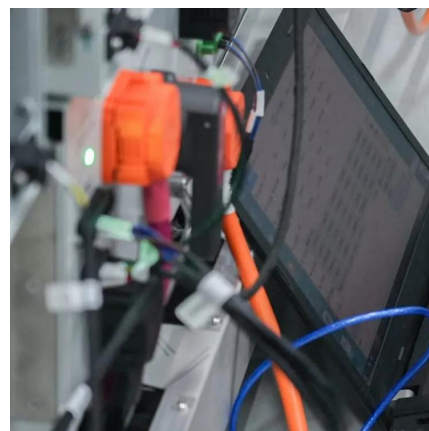


[Solar Panel Components Guide , Orlando FL , Radiant Energy](#)

Aug 20, 2025 · From the outside, a solar panel looks like a simple sheet of glass in a metal frame. But that sleek exterior hides a sophisticated, multi-layered system where every single part has ...

[Solar panel components, the structure of PV panels](#)

Front Cover
Encapsulated Layers
Support Frame
Rear Guard
Electrical Connection Box
Photovoltaic Cells
Solar Panel Stand
Charge Regulator
Battery Or Accumulator
Investor
Photovoltaic cells are the most critical part of the solar panel structure of a solar system. These are semiconductor devices capable of generating a DC electrical current from the impact of solar radiation. Photoelectric cells appeared for the first time in the mid-nineteenth century thanks to the discovery of the photovoltaic effect by the physic See more on solar-energy.technologyui-newenergy



The Hidden Backbone of Solar Power: ...

Discover the poetic structure behind solar energy--from mounts to rails, frames to fasteners--with this complete guide to solar panel structure ...



Contact Us

For catalog requests, pricing, or partnerships, please visit:
<https://www.llsolarenergy.co.za>

Scan QR Code for More Information



<https://www.llsolarenergy.co.za>