

Solar panel roof load bearing





Overview

Can a residential roof support a solar panel system?

Most residential roofs can support solar panel systems, but calculating your roof's load capacity is a crucial step before installation begins. Understanding your roof's structural limitations isn't just about safety—it's also required for permits and can prevent costly structural damage down the road.

Should I install solar panels on my roof?

Installing solar panels on your roof is a smart investment, but first you need to ensure your home can handle the additional weight. Most residential roofs can support solar panel systems, but calculating your roof's load capacity is a crucial step before installation begins.

What are the structural requirements for solar panels?

An essential aspect of the structural requirements for solar panels is the specification of minimum design loads. These ensure the solar panel mounting system will be able to withstand various stressors, such as wind, snow, and seismic activity.

How do I know if my roof is suitable for solar?

We'll examine roof orientation, pitch, load capacity, material, and ventilation. Understand the importance of roof suitability for optimal solar panel performance and longevity. Evaluate your roof's orientation, pitch, and condition to ensure maximum solar exposure.



Solar panel roof load bearing



[Solar Panel Roof Requirements: What You ...](#)

Apr 14, 2024 · Key Takeaways Understand the importance of roof suitability for optimal solar panel performance and longevity. Evaluate your roof's ...

[Assessing Your Roof's Load-Bearing Capacity for Solar Panels](#)

Apr 16, 2024 · Calculating your roof's load-bearing capacity involves assessing the weight of the solar panels, considering structural support elements, and potentially reinforcing the roof to ...



[7 Steps to Calculate Roof Load Capacity for Solar Panels ...](#)

3 days ago · Discover how to safely install solar panels by calculating your roof's load capacity, considering dead and live loads, and determining if structural reinforcement is needed.

[7 Steps to Calculate Roof Load Capacity for ...](#)

3 days ago · Discover how to safely install solar panels by calculating your roof's load capacity, considering dead and live loads, and determining if ...



[Understanding Roof Load-Bearing Capacity for Solar ...](#)

Oct 28, 2025 · Installing solar panels is an excellent step toward sustainable living--but before mounting them, it's crucial to understand your roof's load-bearing capacity. Every roof is ...



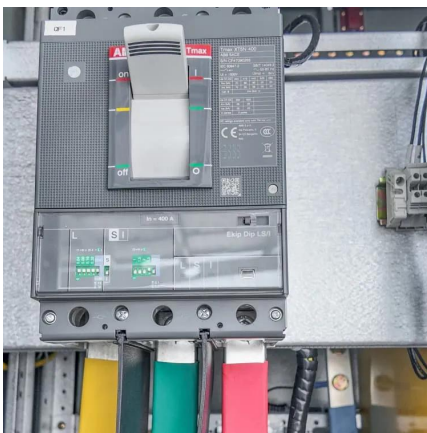
[How do you determine if a roof can handle the weight of solar panels?](#)

3 days ago · Understanding Roof Structure and Load Capacity To effectively determine if a roof can support solar panels, a comprehensive understanding of the roof's structural composition ...



[Roof Load with Solar Panels: What You Need ...](#)

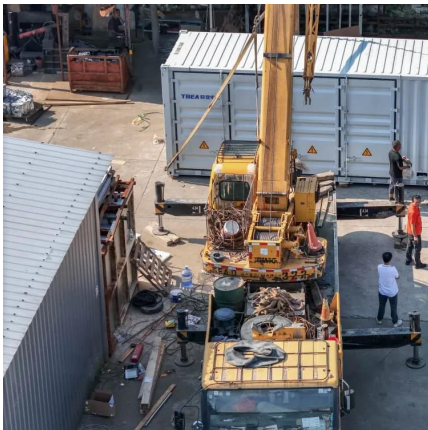
Conclusion: Installing solar panels is a valuable investment in sustainable energy, but it is essential to carefully consider the suitability of your roof. ...





Roof Load with Solar Panels: What You Need to Know

Conclusion: Installing solar panels is a valuable investment in sustainable energy, but it is essential to carefully consider the suitability of your roof. A thorough assessment of load ...

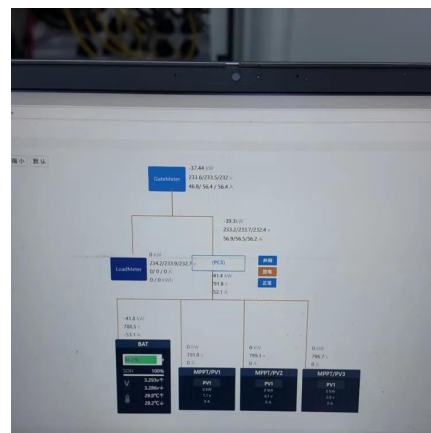


Structural Requirements for Solar Panels -- ...

Feb 22, 2024 · Load-bearing capacity: You can't just slap panels on a roof and call it good. Someone--an engineer, a pro--needs to check if the ...

How to run a structural load analysis for rooftop PV racking

Sep 9, 2025 · Prevent costly roof failure. This guide details the critical steps for a structural load analysis of PV racking, from wind load calculations to assessing your roof's capacity for a ...



Roof Load Distribution Calculations for Solar Panel Structural ...

May 16, 2025 · This innovation decreases the overall load on the roof, which is essential for ensuring the structural safety of older or weaker roofs. For instance, thin-film solar panels ...



What Solar Installers Should Know About Roof Load Capacity

Jul 8, 2024 · Roof load capacity is a critical consideration for solar installers embarking on solar panel installations. By conducting thorough assessments, collaborating with structural ...



Structural Requirements for Solar Panels -- Exactus Energy

Feb 22, 2024 · Load-bearing capacity: You can't just slap panels on a roof and call it good. Someone--an engineer, a pro--needs to check if the roof can actually handle the weight.

Solar Panel Roof Requirements: What You Need to Know

Apr 14, 2024 · Key Takeaways Understand the importance of roof suitability for optimal solar panel performance and longevity. Evaluate your roof's orientation, pitch, and condition to ...



Contact Us

For catalog requests, pricing, or partnerships, please visit:
<https://www.llsolarenergy.co.za>



Scan QR Code for More Information



<https://www.lsolarenergy.co.za>