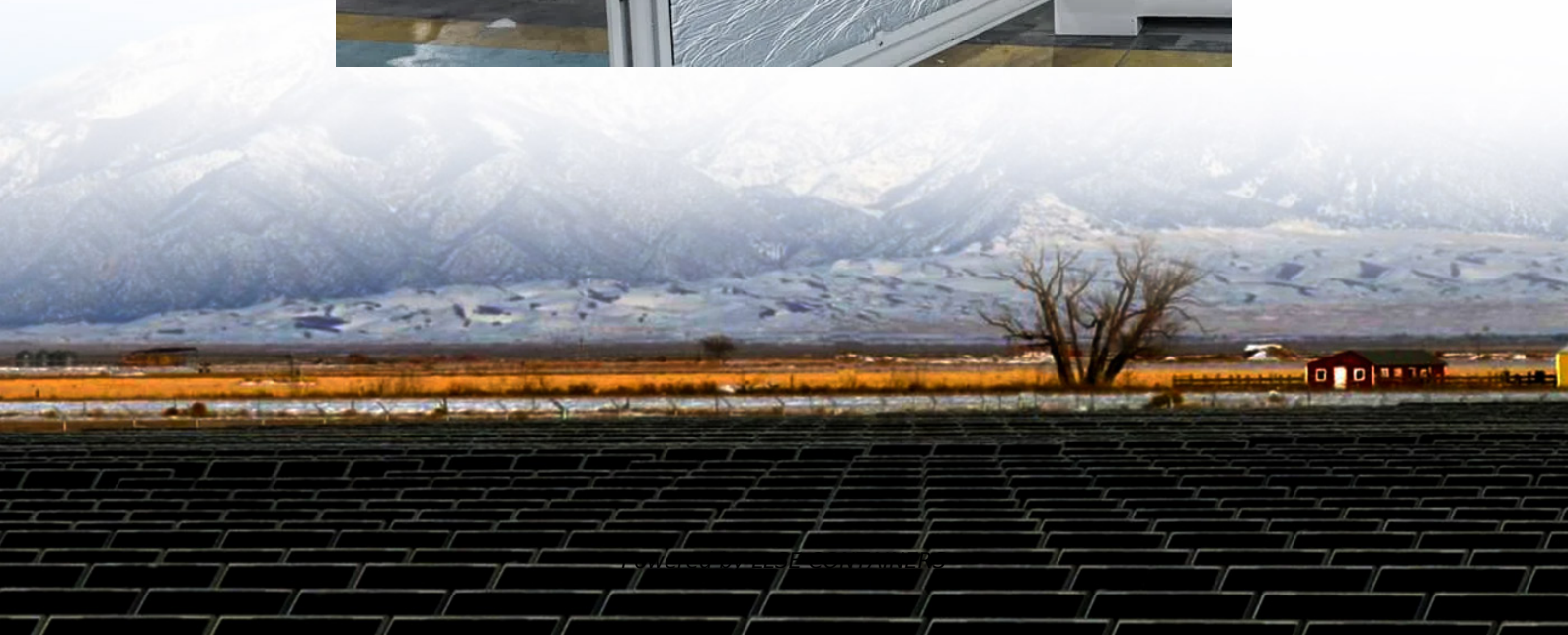


Solar panels and batteries connected in parallel





Overview

Why do solar panels and batteries need to be connected in parallel?

This parallel wiring method is essential for 12V systems, including 12V charge controllers and inverters. Therefore, two or more solar panels and batteries (each rated at 12V DC) are connected in parallel to maintain system voltage while increasing current capacity.

What happens if solar panels are connected in parallel?

This means that when solar panels or batteries are connected in parallel, the voltage level stays the same, but the current capacity increases. For batteries, this increase is measured in ampere-hours (Ah), and for solar panels, in amperes (A). For example:.

How do you wire a solar panel with a battery?

The 12V system is the most common solar panel wiring configuration used with batteries for small load residential application. Typically, to achieve a 12V DC to 120V/230V AC system, both the photovoltaic (PV) panels and batteries are connected in parallel.

How do I connect two solar panels & batteries in parallel?

To connect two or more solar panels and batteries in parallel, simply connect the positive terminal of one panel or battery to the positive terminal of the other, and the negative terminal to the negative terminal, as shown in the diagram below. In the following wiring diagram: Two 12V, 10A, 120W solar panels are connected in parallel.



Solar panels and batteries connected in parallel

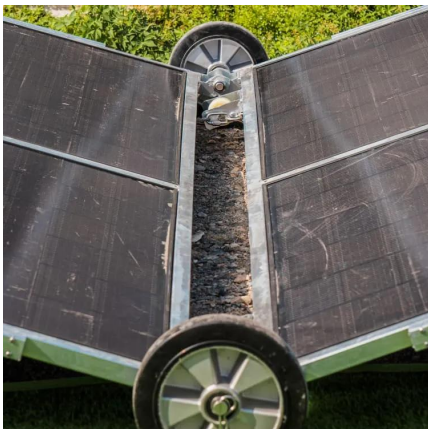


[How to Connect Solar Batteries in Parallel for Maximum ...](#)

Oct 26, 2024 · Unlock the full potential of your solar energy system by learning how to connect solar batteries in parallel. This comprehensive guide explores the benefits of increased ...

[How to Connect Two or More Batteries in Series and Parallel](#)

Jan 11, 2025 · What are the battery types used in solar applications and how to make a series and parallel connection to increase the voltage and current of our energy storage system.



[Solar panels and batteries connected in series and in ...](#)

Should you wish to connect two solar panels manufactured by different companies in series or parallel configurations, the manufacturers are generally not the issue. The issue remains in the ...

[Schematics: Wiring Solar Panels and Batteries in Series and Parallel](#)

Likewise with batteries, wiring two 12V batteries in series will increase the voltage from 12V to 24V, but leave the amp hours at 100Ah.
Schematic for Wiring Solar Panels in Parallel



Wiring ...



[How to Connect Solar Panels in Parallel](#)

Aug 18, 2025 · When building a solar power system, connecting solar panels in parallel is a practical way to increase current while keeping voltage constant. This setup is common in 12V ...

[How to Wire Solar Panels in Series-Parallel Configuration?](#)

Dec 29, 2024 · The following solar panel and battery wiring diagram shows how to wire a four 12V Solar Panels in series-parallel connection to a 24V, 400Ah battery with an automatic inverter ...



[How to Wire Solar Panel & Batteries in Parallel](#)

2 days ago · Parallel Connection of Solar Panels and Batteries with Automatic UPS System - 12V Installation The 12V system is the most common solar panel wiring configuration used with ...



[Parallel Connection of Batteries in DIY Solar Power](#)

Jul 20, 2024 · Conclusion Parallel connection of batteries in a DIY solar power system is a practical way to expand energy storage capacity. By following key guidelines--matching ...

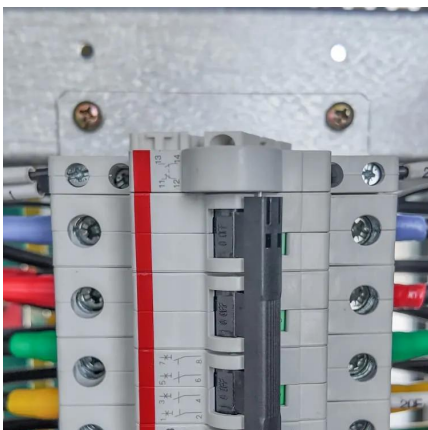


[How to connect solar batteries in parallel](#) . [NenPower](#)

Jan 31, 2024 · To effectively connect solar batteries in parallel and ensure optimal performance, it's essential to understand the fundamental concepts and best practices involved.

[How to Wire Two or More Solar Panels in Parallel](#)

Jan 11, 2025 · How to wire in parallel both identical and different solar panels, what happens to the panels in case of shading, how to optimize the system, what is the function of the blocking ...



[How to Wire Solar Panel & Batteries in Parallel for 12V System](#)

As illustrated in the figure below, simply connect the positive terminal of one solar panel or battery to the positive terminal of another, and do the same for the negative terminals. The ...



[How To Connect Solar Batteries In Series And Parallel](#)

Sep 30, 2024 · This section explains the different types of batteries used in wind and solar power systems, and how to wire them together in series and parallel. To achieve a 12VDC to ...



Contact Us

For catalog requests, pricing, or partnerships, please visit:
<https://www.llsolarenergy.co.za>

Scan QR Code for More Information



<https://www.llsolarenergy.co.za>