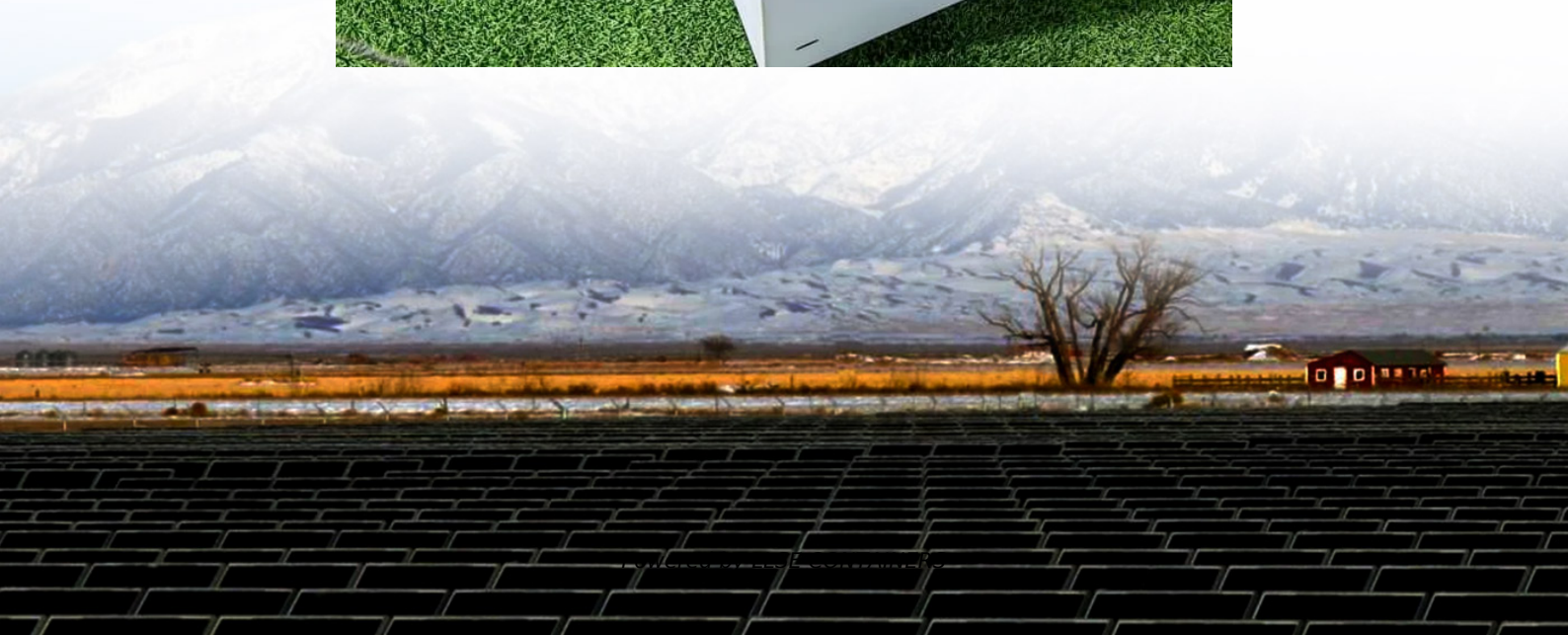


Solar power generation system 20b what does it mean





Overview

What is a building integrated photovoltaic (BIPV)?

Building-integrated photovoltaic (BIPV): Solar panels that can be integrated with a building's roof tiles rather than mounted on top of the roof. Also known as a solar shingle. Ground-mounted solar: Solar panel systems mounted in a foundation on a large plot of open land.

What is a basic solar power system?

Therefore, this article will explore the fundamentals of a basic solar power system. In a typical solar power generation system, the sunlight strikes the solar panels, generating DC electricity in the photovoltaic (PV) cells. The DC voltage travels through cables to the inverter and the inverter converts the DC electricity into AC electricity.

How many kilowatts can a mw of solar power?

One MW = 1,000 kilowatts. For reference, one MW of solar can power about 173 homes, according to the Solar Energy Industries Association (SEIA). Photovoltaics (PV): Devices that convert solar energy into electricity using semiconductors (this conversion is called the photovoltaic effect). Solar panels are photovoltaics and make up a PV system.

When do solar panels generate the most electricity?

A south-facing solar PV system will tend to generate more around noon. The sun rises in the east and so east-facing PV panels will have maximum generation part-way through the morning. A west-facing array will tend to generate most electricity part-way through the afternoon.



Solar power generation system 20b what does it mean



[Too many confusing solar terms? Here's a quick guide](#)

Dec 6, 2023 · EnergySage has developed an index of solar energy terms to help you decode solar jargon and better understand your options.

[Megawatt capacity power rating for utility-scale solar](#)

Dec 4, 2025 · Output in MW Rating of system capacity - MWAC, MWP and MW Capacity ratings for utility-scale power stations are usually given in megawatts, which for most technologies ...



[Understanding solar power generation. GlobalSpec](#)

Sep 11, 2024 · The cost of solar panels and installation has decreased significantly in recent years and with government incentives in many regions, solar power is being considered as a cost ...



Solar Panel Specification

A quick glance at a solar panel's specification sheet will reveal the power generation and conversion efficiency of a system. If you don't know what the numbers mean, it may as well be ...



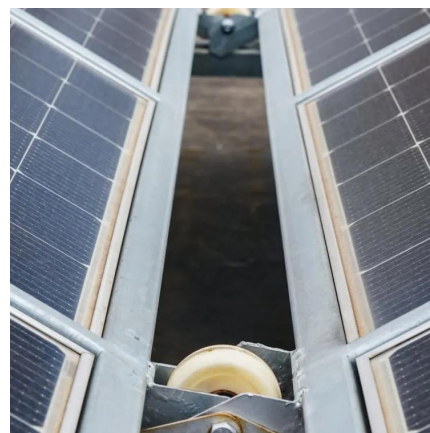
Solar Power Generation

CSP, or concentrated solar power generation, is defined as a method of solar power generation that converts thermal energy, typically from steam, into electricity, similar to conventional ...



[30 Common Solar Power Terms, and What They Mean](#)

May 13, 2020 · 30 Common Solar Power Terms, and What They Mean We know learning about solar power energy and how it all works can be confusing, so we've put together a breakdown ...



[Megawatt capacity power rating for utility ...](#)

Dec 4, 2025 · Output in MW Rating of system capacity - MWAC, MWP and MW Capacity ratings for utility-scale power stations are usually given in ...





[What does 20mw solar energy mean?.. NenPower](#)

Jun 7, 2024 · 1. The term ' 20MW solar energy ' signifies the capacity of a solar power system to generate a maximum of 20 megawatts of electrical power. This capacity is a measure of ...



[Solar power generation: Everything you need to know](#)

Feb 10, 2025 · What does it mean to generate solar energy? A solar energy generation is the process of converting sunlight into usable energy, usually in the form of electricity or heat. The ...



[Solar power generation: Everything you need ...](#)

Feb 10, 2025 · What does it mean to generate solar energy? A solar energy generation is the process of converting sunlight into usable energy, ...



[Understanding your solar PV system and maximising the ...](#)

Mar 8, 2022 · The main components of a solar photovoltaic (PV) system are: Solar PV panels - convert sunlight into electricity. Inverter - this might be fitted in the loft and converts the ...



What does 20mw solar energy mean?

Jun 7, 2024 · 1. The term ' 20MW solar energy ' signifies the capacity of a solar power system to generate a maximum of 20 megawatts of electrical ...



Solar power generation system 20b what does it mean

What is solar photovoltaic (PV) power generation? Solar photovoltaic (PV) power generation is the process of converting energy from the sun into electricity using solar panels. Solar panels, also ...

Understanding solar power generation

Sep 11, 2024 · The cost of solar panels and installation has decreased significantly in recent years and with government incentives in many ...



Contact Us

For catalog requests, pricing, or partnerships, please visit:
<https://www.llsolarenergy.co.za>



Scan QR Code for More Information



<https://www.lsolarenergy.co.za>