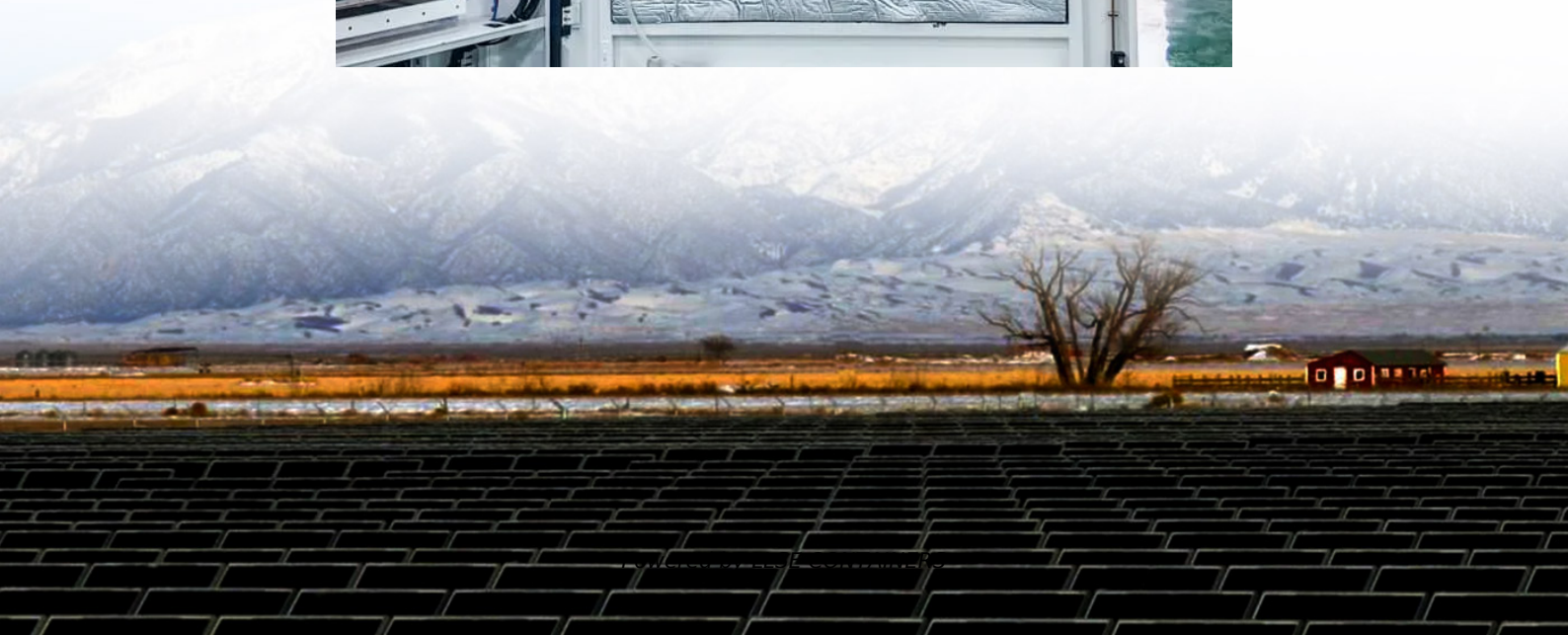


Solar-powered wind-resistant container for railway stations





Overview

As high-speed and light trains develop, they will become more sensitive to crosswinds. Since strong crosswinds tend to occur in remote areas where power supply is difficult, converting wind energy into ele.

What is a solar railway?

Please try again later. Solar railways involve the strategic installation of photovoltaic (PV) panels along railway tracks to harness solar energy directly into the rail transport network. This approach reduces the carbon footprint of train operations and enhances the overall energy efficiency of the rail network.

How can solar and wind power transform rail systems?

The integration of renewable energy sources, like solar and wind power, is transforming how rail systems are powered. Solar panels installed at stations, along tracks, or on train roofs generate clean energy to power operations. Wind turbines located along railway corridors also contribute to the energy supply.

Can solar energy be used in railways?

As the global push towards sustainability gains momentum, one of the most innovative adaptations in the transportation sector is the integration of solar energy into railway systems. Known as solar railways, this initiative not only propels the rail industry towards energy autonomy but also sets a benchmark in environmental stewardship.

Are solar power trains a viable option for energy storage and use?

The viability and possible advantages of solar power trains with an integrated battery system for energy storage and use are examined in this research study. The train's energy autonomy and dependability are increased by the hybrid system, which captures solar energy during the day and stores it in batteries for use at night or in low light.



Solar-powered wind-resistant container for railway stations



[A renewable energy harvesting wind barrier based on coaxial](#)

Nov 1, 2022 · The proposed EHWP consists of four parts: 1) a porous wind barrier; 2) coaxial contrarotating (CCR) wind turbines; 3) a generator module; and 4) an energy storage module. ...

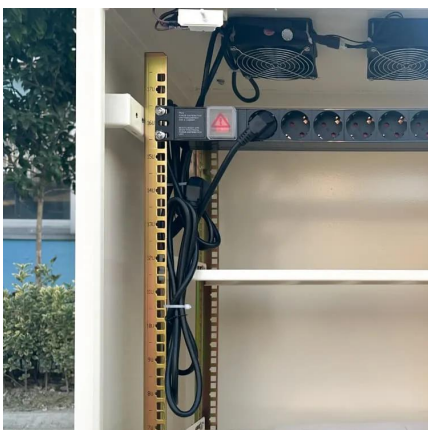
[Integrating Renewable Energy into Railway Systems: a ...](#)

Dec 20, 2024 · Integrating renewable energy sources into railway systems presents a promising solution to mitigate rising CO2 emissions, growing energy demands, and environmental ...



[SOLAR-ASSISTED RAILROAD-BASED WIND FARM , TREA](#)

Nov 5, 2020 · Semi-trailer shipping container--semi-trailer shipping container with airfoils Sensors--devices to monitor the railroad wind farms' functions Solar-assisted railroad-based ...



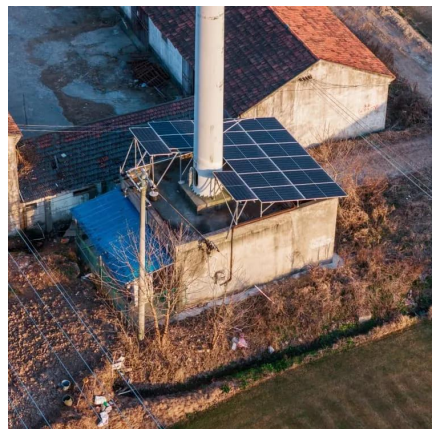
[Solar Railways: Pioneering Sustainable Solutions in Train ...](#)

Feb 5, 2025 · Solar railways involve the strategic installation of photovoltaic (PV) panels along railway tracks to harness solar energy directly into the rail transport network. This approach ...



Analysis of Energy Efficiency and Resilience for AC Railways With Solar

Sep 30, 2024 · Railway energy consumption and its environmental repercussions, alongside operational costs, are pivotal concerns necessitating attention. With escalating energy prices, ...



Sustainable Innovations in the Railway Industry

Jan 6, 2025 · The integration of renewable energy sources, like solar and wind power, is transforming how rail systems are powered. Solar panels installed at stations, along tracks, or ...



Solar Powered Train : A Sustainable Solution for ...

Sep 3, 2024 · A notable experiment that demonstrates the viability of combining solar panels and batteries for propulsion is the solar-powered train project by the Byron Bay Railroad Company ...



[A wind-solar energy harvester based on airflow ...](#)

Nov 15, 2023 · This paper proposes and confirms a Wind-Solar Energy Harvester (WSEH) founded on an Airflow Enhancement Mechanism (AFEM) for powering rail-side equipment. ...



Building Eco-Friendly Stations: Solar Power and Renewable Energy in Rail

Jan 7, 2025 · Future of Renewable Energy in Rail Stations Innovations in Solar and Renewable Technologies As technology advances, the cost of solar panels, wind turbines, and energy ...

[China's First Zero-Carbon Rail Transit Line Installs Solar Stations](#)

Mar 18, 2025 · The Yibin ART T1 Line in Sichuan Province has become the world's first rail transit system to achieve carbon-neutral operations certified by the internationally recognized PAS ...



Contact Us

For catalog requests, pricing, or partnerships, please visit:
<https://www.llsolarenergy.co.za>



Scan QR Code for More Information



<https://www.llsoleenergy.co.za>