

Substation DC panel inverter power





Overview

What is a DC control power system for an electrical substation?

dc control power system for an electrical substation. I. INTRODUCTION The most critical component of a protection, control and monitoring (PCM) system is the auxiliary dc control power system. Failure of the dc control power can render fault detection devices unable to detect faults, breakers unable to trip for fault.

What is an inverter substation?

Inverter substation - this CSS is made with a concrete or sheet metal base frame (per market requirements) per the latest IEC standard 62271-202 consists of DC/AC inverters, primary low voltage AC switchboard, step up distribution transformer (oil or dry type) and medium voltage gas insulated or air insulated secondary switchgear.

What is a solar substation?

The purpose of the substation is to collect all solar array power and feed into the grid after stepping up voltage to distribution level. This substation is based on an Arcadia design, modified for the project. Power flow is bottom to top, 34.5 kV bus to 115 kV bus. It will consist of the following major drawings (single-line drawings).

What is a transformer substation?

Transformer substations, collector stations and inverter substation meeting the latest global IEC standards up to 24 kV. Solar and wind renewable energy is rapidly growing globally. Power is generated at low voltage DC levels and transformed up to medium voltages for network distribution.



Substation DC panel inverter power



[Compact secondary substations for solar and ...](#)

Inverter substation - this CSS is made with a concrete or or sheet metal base frame (per market requirements) per the latest IEC standard 62271-202 ...

[Sizing of 110V DC charger for MV panels - Auxiliary power](#)

Feb 4, 2025 · Auxiliary DC power system An auxiliary DC power system that consists of a charger, battery bank, DC distribution system, and monitoring system is a critical part of the ...



Technologies

Technical details The architecture and power electronics of DC substations are almost identical in most mass transit systems and mainly based on diode rectifiers. If an antiparallel inverter is ...

[Substation & Power Plant UPS Systems - DC Backup ...](#)

6 days ago · In power generation and substation environments, uninterrupted and stable DC and AC power is essential for grid stability, plant safety, and critical system protection. DEWEN(TM) ...



[Substation & Power Plant UPS Systems - DC ...](#)

6 days ago · In power generation and substation environments, uninterrupted and stable DC and AC power is essential for grid stability, plant safety, ...



[60 MW grid tied solar power plant with 115 kV/34.5 kV substation ...](#)

Apr 21, 2025 · System Power Flow A solar (PV) plant consisting of arrays will output power to a grid-tied power substation. The output of the plant is 60 MW. The solar power plant will ...



[Why We Use Dc Power in Substation](#)

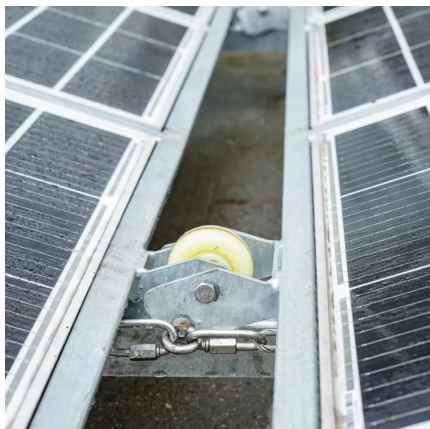
In a DC substation, the direct current (DC) system provides the power to operate the equipment. The DC system consists of one or more DC generators, a rectifier, and an inverter.





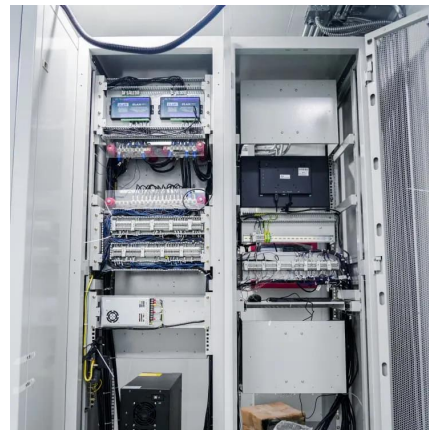
Why Dc System is Required in Substation

The value of DC voltage used in a substation depends on many factors, including the size and type of equipment being used, the amount of power ...



What is a solar substation and how to customize yours with...

May 5, 2025 · Once electricity is generated by the photovoltaic (PV) modules and converted from DC to AC by inverters, it enters the substation for further processing. At this point, the ...



What is a solar substation and how to customize yours ...

May 5, 2025 · Once electricity is generated by the photovoltaic (PV) modules and converted from DC to AC by inverters, it enters the substation for further processing. At this point, the ...



Integrated Inverter-Booster Substation . PV Power...

Jul 15, 2025 · The inverter-booster integrated box-type substation is designed to address the challenges in photovoltaic power systems where separate DC inverters and AC boosters result ...



[Sizing of 110V DC charger for MV panels - ...](#)

Feb 4, 2025 · Auxiliary DC power system An auxiliary DC power system that consists of a charger, battery bank, DC distribution system, and ...

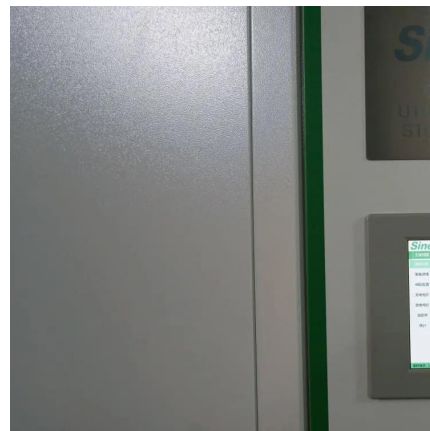


[Auxiliary DC Control Power System Design for Substations](#)

Abstract--The most critical component of a protection, control, and monitoring system is the auxiliary dc control power system. Failure of the dc control power can render fault detection ...

[Why Dc System is Required in Substation](#)

The value of DC voltage used in a substation depends on many factors, including the size and type of equipment being used, the amount of power being transmitted, and the distance from ...



[Compact secondary substations for solar and wind applications](#)

Inverter substation - this CSS is made with a concrete or sheet metal base frame (per market requirements) per the latest IEC standard 62271-202 consists of DC/AC inverters, primary low ...



Contact Us

For catalog requests, pricing, or partnerships, please visit:
<https://www.llsolarenergy.co.za>

Scan QR Code for More Information



<https://www.llsolarenergy.co.za>