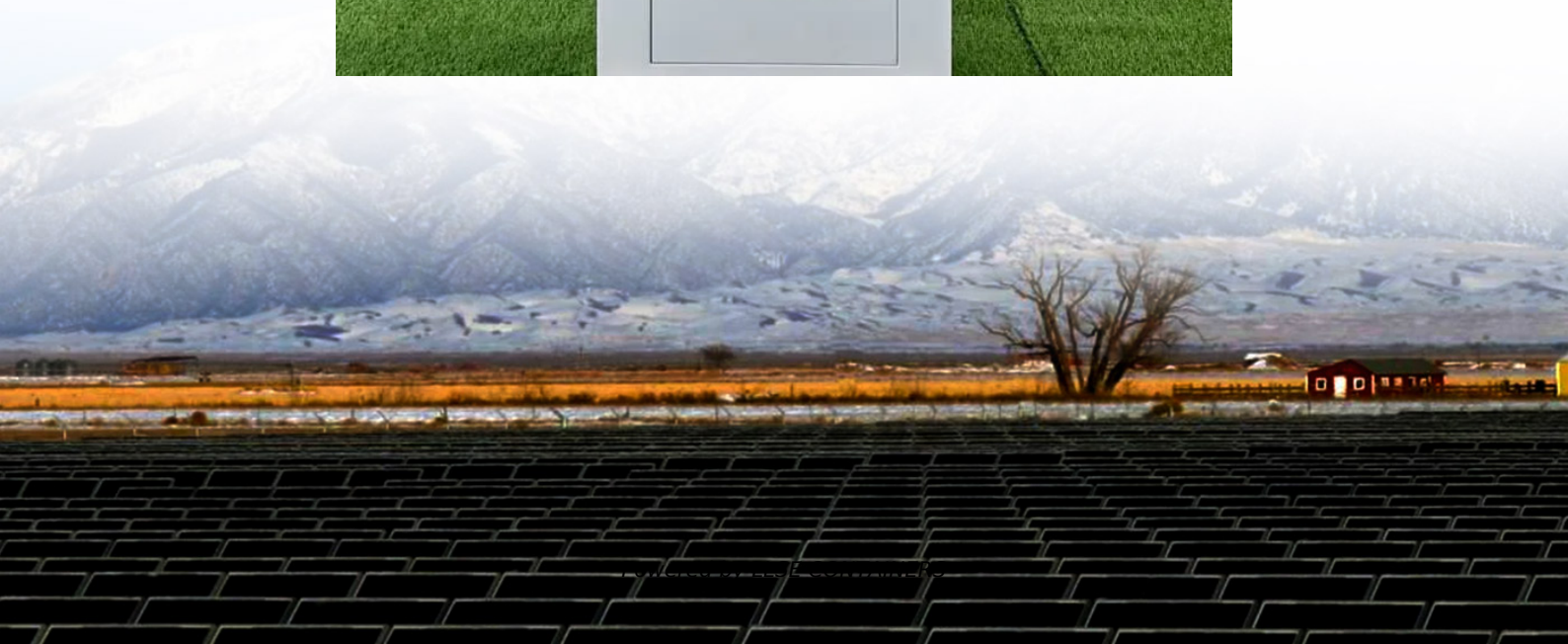


Td-let base stations are divided into indoor and outdoor





Overview

Should in-building cell deployment be increased in dense urban high-rise areas?

For the dense urban high-rise area, around 37 percent of the macro traffic and 40 percent of the outdoor small cell traffic is being served to indoor users. This indicates in-building cell deployment could be increased to meet this demand, which is mostly in modern thermally-efficient buildings.

Should 5G base stations be tripled?

To cover the same area as traditional cellular networks (2G, 3G, and 4G), the number of 5G base stations (BSs) could be tripled (Wang et al., 2014). Furthermore, Ge, Tu, Mao, Wang, and Han, (2016) suggested that to achieve seamless coverage services, the density of 5G BSs would reach 40-50 BSs/km².

Can in-building cell deployment meet Indoor traffic demand?

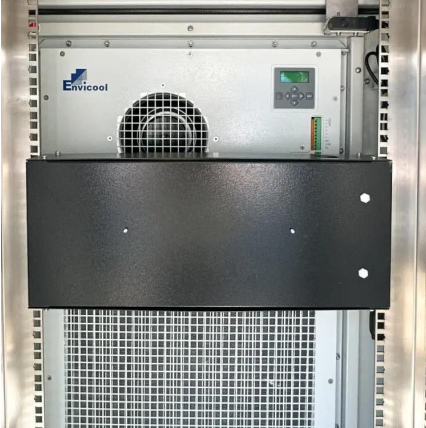
In a dense urban high-rise area, 37 percent of macro traffic was served to indoor users during busy hours, indicating that in-building cell deployment could be increased to meet indoor traffic demand. Compared to the statistical approach, machine learning techniques allow the use of data without directly specifying their contribution to the result.

Are more BSS required in areas with densely distributed buildings?

Another interesting result is that as p increases, more BSs are deployed in the southern and northwestern parts of the study area where buildings are densely distributed. In other words, more BSs are required in areas with densely distributed buildings to improve service coverage.



Td-let base stations are divided into indoor and outdoor

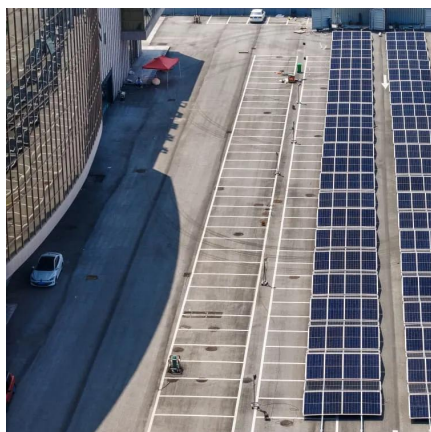


Indoor White Paper

Sep 8, 2022 · The typical indoor solutions can be divided into three types: outdoor-to-indoor, traditional passive DAS, and digital indoor distribution system. They vary in advantages and ...

[Mobility Report: 5G building penetration](#)

Dec 2, 2025 · New methods are being developed to accurately estimate the proportion of traffic in outdoor base stations that is due to indoor activity. Two distinct but interrelated approaches to ...



[Using Clustering Techniques to Plan Indoor Femtocell Base Stations](#)

Jul 23, 2025 · Long-term evolution 'LTE' advanced-based heterogeneous networks are used to improve spectral efficiency per unit area. Nowadays, the network specialists try to increase the ...

[The Study of Indoor and Field Trials on 2 x 8 MIMO ...](#)

Apr 21, 2013 · In this session, the downlink performance of TD-LTE network is evaluated by the link level simulation. The base stations are equipped with eight antennas, and UE has two ...



[LTE-based Pervasive Sensing Across Indoor and Outdoor ...](#)

Dec 22, 2021 · LTE base stations are deployed nation-wide, and LTE signals cover not just indoor but also outdoor environments. According to the official communication market report of the ...



[Optimizing the ultra-dense 5G base stations in urban outdoor ...](#)

Dec 1, 2020 · Due to the high propagation loss and blockage-sensitive characteristics of millimeter waves (mmWaves), constructing fifth-generation (5G) cellular networks involves deploying ...



[IEEE TRANSACTIONS ON INSTRUMENTATION AND ...](#)

Jan 23, 2023 · Abstract--The ubiquity, large bandwidth, and spatial diversity of the fifth generation (5G) cellular signal render it a promising candidate for accurate positioning in ...





[Indoor vs Outdoor LTE Deployment: Best Practices & Smart ...](#)

Nov 26, 2025 · Indoor vs Outdoor LTE Deployment. Learn coverage, cost, RF challenges, best performance strategies to avoid weak signals in enterprise networks.



[5g base stations are divided into indoor and outdoor](#)

Dec 6, 2025 · In urban deployments, the majority of mobile traffic is usually indoors, which is difficult to serve from outdoor base stations due to radio signal attenuation through walls and ...

[ZTE Successfully Tests TD-LTE One-Line Base Stations](#)

This new solution was tested by the Guangzhou arm of China Mobile. Guangzhou has China's largest TD-LTE network and is home to extremely complex coverage scenarios that pose ...



Contact Us

For catalog requests, pricing, or partnerships, please visit:
<https://www.llsolarenergy.co.za>



Scan QR Code for More Information



<https://www.lsolarenergy.co.za>