

Technical requirements for internal connection of battery cabinet





Overview

What are the customer requirements for a battery energy storage system?

Any customer obligations required for the battery energy storage system to be installed/operated such as maintaining an internet connection for remote monitoring of system performance or ensuring unobstructed access to the battery energy storage system for emergency situations. A copy of the product brochure/data sheet.

What are the safety requirements for a battery cabinet?

- The battery cabinet must be properly earthed/grounded and due to a high leakage current, the earthing/grounding conductor must be connected first. Failure to follow these instructions will result in death or serious injury. Battery Safety DANGER.

How do I connect a battery cabinet to a power system?

Procedure 1. Furnished with the battery cabinet are battery disconnect circuit breaker alarm lead assemblies. Refer to the power system installation manual to use these alarm leads to connect the battery cabinet battery disconnect circuit breaker alarm into the power system alarm circuits.

What equipment do I need to install a battery energy storage system?

Any bollards required to be installed in front of battery energy storage system.
Safety exclusion zone around battery energy storage system if required.
Location of main switchboard. Any other existing NET on site.



Technical requirements for internal connection of battery cabinet



Microsoft Word

Feb 14, 2023 · An installation manual will be available inside the battery cabinet, accessible to the customer, with all the requirements that must be performed for both internal (if intermediate ...

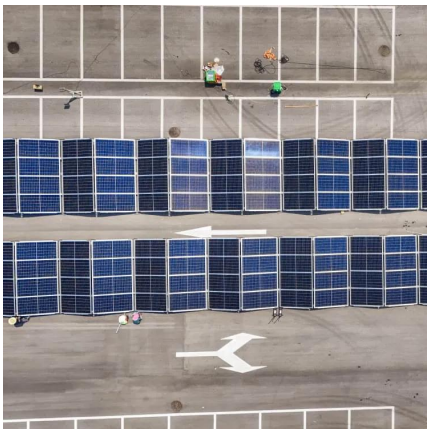
[Technical requirements for internal connection of battery cabinet](#)

The battery technology shall be in accordance with Table 1. 5.3 The battery performance shall meet the requirement of number of repeated cycles of charging and discharging for its service ...



[-48 VDC Battery Cabinet Installation and User Manual ...](#)

Apr 21, 2022 · Connect the power system's battery cable terminated in an Anderson connector to the first battery cabinet's battery cable terminated in a mating Anderson connector.



[UBC80 Battery Cabinet Installation, Operation.](#)

Feb 3, 2025 · Review the battery system schematic that is located attached to the inside of a cabinet door to determine the number of batteries that need to be installed in the cabinet, the ...



[Core technical requirements for lithium battery energy ...](#)

Core technical requirements for lithium battery energy storage cabinets How should battery energy storage system specifications be based on technical specifications? Battery energy ...



[Requirements for battery enclosures - Design ...](#)

May 24, 2019 · When designing e-mobiles - and thus the batteries or battery cases - there are some basic requirements that have to be taken into account, both from the technology as well ...



Technical Guidance

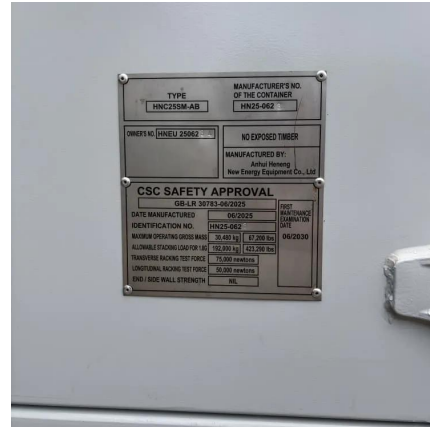
Aug 11, 2023 · Technical Guidance - Battery Energy Storage Systems This technical guidance document is intended to provide New Energy Tech (NET) Approved Sellers with guidance on ...





Galaxy Lithium-ion Battery Cabinet

Jan 2, 2025 · The information provided in this document contains general descriptions, technical characteristics and/or recommendations related to products/solutions. This document is not ...



Configuration Requirements of Master/Slave Cabinets and Connection

Jan 20, 2025 · Battery cabinet connection requirements: If the UPS capacity is 800 kVA or lower, connect battery cables only to the power cabinet 1. If the UPS capacity exceeds 800 kVA, ...

Technical requirements for cabinet battery compartment

This article describes best practices for designing battery rooms including practical battery stand systems and accessible cabinet enclosures .



Contact Us

For catalog requests, pricing, or partnerships, please visit:
<https://www.llsolarenergy.co.za>



Scan QR Code for More Information



<https://www.lsolarenergy.co.za>