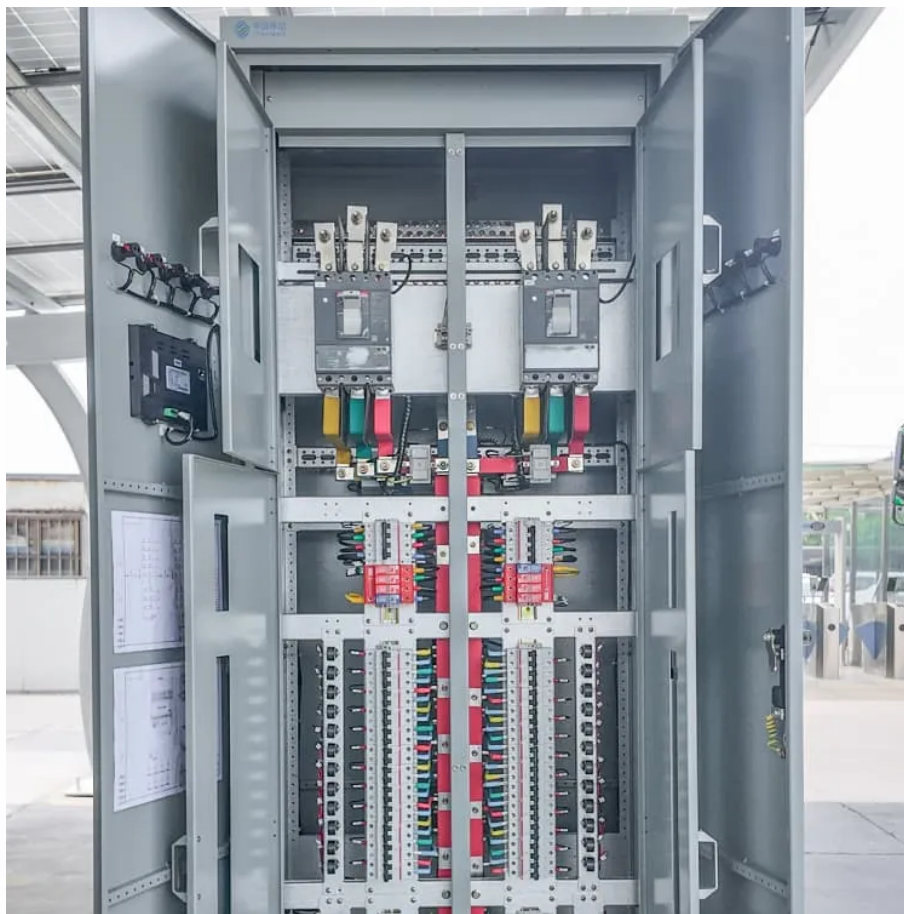


Three-phase inverter output





Overview

What is a three phase bridge inverter?

A three phase bridge inverter is a device which converts DC power input into three phase AC output. Like single phase inverter, it draws DC supply from a battery or more commonly from a rectifier. A basic three phase inverter is a six step bridge inverter. It uses a minimum of 6 thyristors.

How does a 3 phase inverter work?

However, most 3-phase loads are connected in wye or delta, placing constraints on the instantaneous voltages that can be applied to each branch of the load. For the wye connection, all the “negative” terminals of the inverter outputs are tied together, and for the delta connection, the inverter output terminals are cascaded in a ring.

What is the difference between a 3 phase and a single phase inverter?

In a 3 phase, the power can be transmitted across the network with the help of three different currents which are out of phase with each other, whereas in single-phase inverter, the power can transmit through a single phase. For instance, if you have a three-phase connection in your home, then the inverter can be connected to one of the phases.

What is a 3 phase square wave inverter?

A three-phase square wave inverter is used in a UPS circuit and a low-cost solid-state frequency charger circuit. Thus, this is all about an overview of a three-phase inverter, working principle, design or circuit diagram, conduction modes, and its applications. A 3 phase inverter is used to convert a DC i/p into an AC output.



Three-phase inverter output



[All about Inverter Three-phase Unbalanced Output Function](#)

Oct 9, 2024 · Learn an inverter's three-phase unbalanced output function, how it enhances power stability, addresses imbalance risks, and supports efficient energy use in complex load ...

[What is Three Phase Inverter and How Does It Work](#)

Aug 1, 2025 · What is three phase inverter? That is a device that converts direct current (DC) power into alternating current (AC) in three separate phases. Unlike single-phase inverters ...

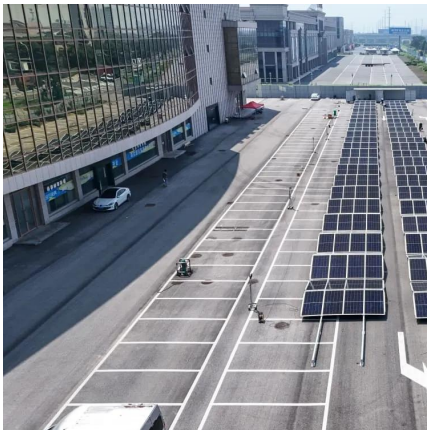


[How does a Three Phase Inverter Work?](#)

Dec 15, 2023 · VT1 to VT6 is turned on and off sequentially with a 60-degree potential difference, forming three-phase voltages (a, b, c) at the inverter output. The switch control signals for the ...

[Lecture 23: Three-Phase Inverters](#)

Feb 24, 2025 · One might think that to realize a balanced 3-phase inverter could require as many as twelve devices to synthesize the desired output patterns. However, most 3-phase loads are ...



[Three Phase Inverter : Circuit, Working and Its Applications](#)

A three-phase inverter working principle is, it includes three inverter switches with single-phase where each switch can be connected to load terminal. For the basic control system, the three ...

[Three Phase Bridge Inverter Explained](#)

Circuit Diagram of Three Phase Bridge Inverter
Working Principle of Three Phase Bridge Inverter
Formula of Line and Phase Voltage
Figure below shows a simple power circuit diagram of a three phase bridge inverter using six thyristors and diodes. A careful observation of the above circuit diagram reveals that power circuit of a three phase bridge inverter is equivalent to three half bridge inverters arranged side by side. The three phase load connected to the ou...
See more on electricalbaba Tennessee Tech University[PDF]



CHAPTER4

Dec 22, 2023 · 4.1 Introduction In this chapter the three-phase inverter and its functional operation are discussed. In order to realize the three-phase output from a circuit employing dc as the ...



Contact Us

For catalog requests, pricing, or partnerships, please visit:
<https://www.llsolarenergy.co.za>

Scan QR Code for More Information



<https://www.llsolarenergy.co.za>