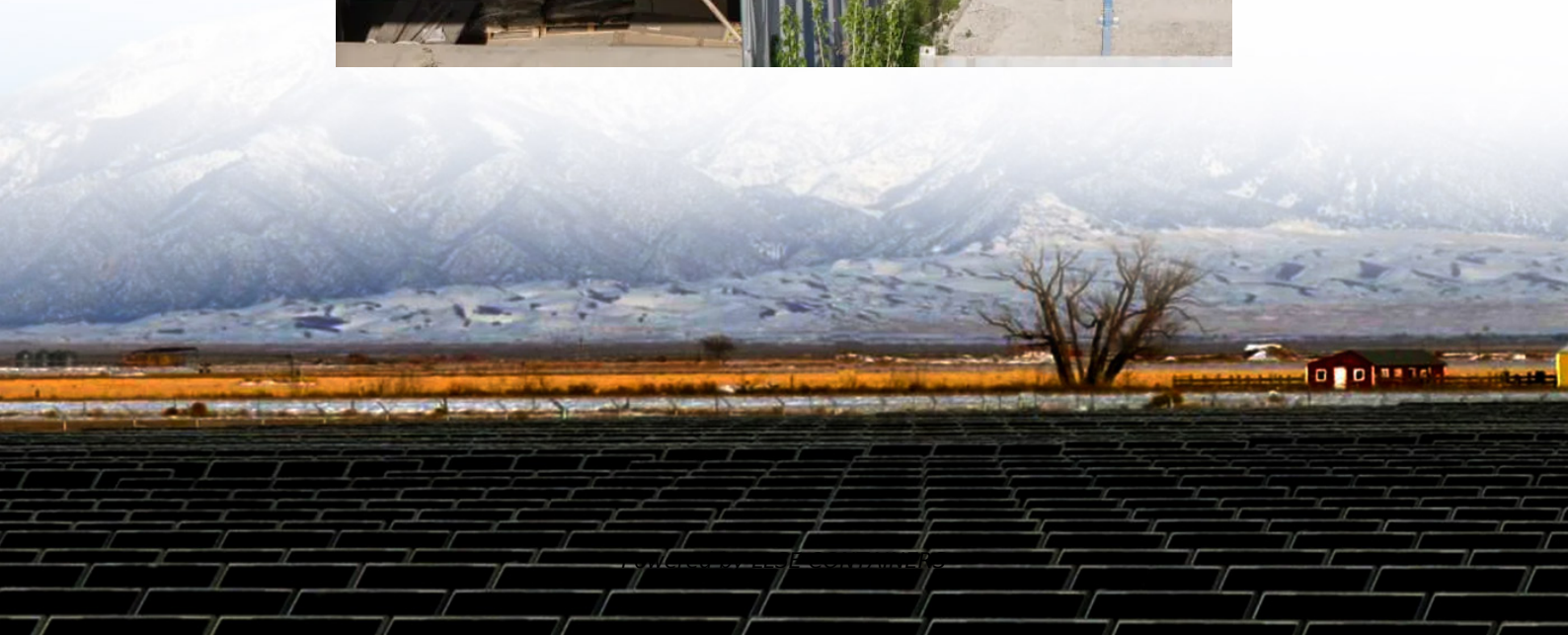


UK emergency lighting solar container lithium battery pack





Overview

What is a self-contained emergency light?

The definition of a self-contained emergency light, is a luminaire that has an on-board battery either contained within, or connected to, the luminaire. The emergency light is connected to the mains lighting circuit for monitoring purposes.

Are bright source emergency lights ICEL endorsed?

Bright Source offers a wide-range of self-contained lights with a built-in self-test function. This includes the Bright Source range of emergency lighting, but also can be sourced from our industry partners, meaning we can provide ICEL endorsed and/or kitemarked products.

How do I enquire about the led emergency lighting pack?

You can enquire about the LED emergency lighting pack via the link above the Product Summary table. Alternatively feel free to speak to one of our team on +44 (0)1387 255816. Our emergency packs and kits are designed to work with a diverse range of light fittings, and be suitable for installation in a variety of environments.

How does emergency lighting work?

On detection of loss of power to the connected mains lighting circuit, the luminaire is illuminated, powered by the on-board battery, for the chosen duration. Bright Source offers a full and comprehensive range of self-contained emergency lighting products to suit all budgets.



UK emergency lighting solar container lithium battery pack



Self Contained Emergency Lighting Systems

The definition of a self-contained emergency light, is a luminaire that has an on-board battery either contained within, or connected to, the luminaire. The emergency light is connected to ...

18650 lithium battery pack 12v8ah solar street light emergency ...

About this item 1. ****High-Performance Lithium Battery****: Our 18650 lithium battery pack delivers exceptional performance for various applications, including solar street lights, emergency ...



What's the best emergency lighting battery , Clevertronics UK

Nov 27, 2025 · What is it? Lithium Nanophosphate is the Lithium battery technology we use in our L10 range; it's more powerful, longer lasting, and more stable than other Lithium Iron batteries. ...



NEW EMERGENCY LIGHTING RANGE

Jan 8, 2025 · Smart Systems UK Ltd was established in 2000 and has grown steadily in each of the subsequent years. We started in the emergency conversions market supplying electrical ...



[Energy Solutions , Containerised hybrid power systems](#)

Lithium Ion battery pack or Lead acid deep cycle battery bank. (Lithium system offers superior energy performance due to low battery losses and also optimises fuel consumption and ...



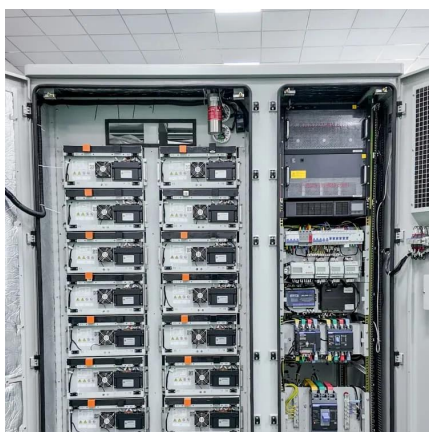
[Internal Solar Light Kit for Containers](#)

Simple, Reliable Lighting Powered by a 15W polycrystalline solar panel and a 10,400 mAh lithium-ion battery, this kit charges during the day and provides bright, long-lasting light after dark. The ...



[Hawk Universal Lithium Emergency Kit, Edmundson ...](#)

The Ansell Hawk AHUEMKIT/LI is a universal self-test emergency converter pack for LED luminaires. Ideal for most LED panels, downlights and linear products, the kit includes ...





Emergency Pack Lithium (Li-Ion) Batteries

LiFeP04 is the right choice for emergency lighting because they battery cells are smaller and draw much less power during the charging process. The life expectancy of LiFe04 is double the life ...



Contact Us

For catalog requests, pricing, or partnerships, please visit:
<https://www.llsolarenergy.co.za>

Scan QR Code for More Information



<https://www.llsolarenergy.co.za>