

User and base station communication





Overview

What is a base station in a telecommunications network?

A base station is a critical component in a telecommunications network. A fixed transceiver that acts as the central communication hub for one or more wireless mobile client devices. In the context of cellular networks, it facilitates wireless communication between mobile devices and the core network.

Why is a base station important in wireless communication?

A base station is fundamental in wireless communication, because it facilitates the connection between your device and the wider network. Without base stations, mobile data and voice services would be impossible, as there would be no infrastructure to handle the transmission of signals.

Why are base stations important?

Base stations are the backbone of wireless communication networks, playing a pivotal role in signal transmission, network reliability, and high-speed data connectivity. As technology evolves, the importance of base stations will continue to grow, addressing new challenges and supporting the ever-expanding demand for wireless communication services.

Can a new base station architecture improve multiuser network performance?

This paper proposes a new base station (BS) architecture employing multiple MAs for improving the multiuser network performance. First, the uplink multiple access channel (MAC) is modeled to capture the characteristics of the variation of wireless channels caused by the movement of MAs at the BS.



User and base station communication



[Understanding the Base Station Subsystem: A ...](#)

Oct 4, 2024 · In the world of mobile telecommunications, understanding the Base Station Subsystem (BSS) is paramount for grasping how our everyday communications function ...

[Understanding Base Stations: The Backbone of Wireless Communication](#)

Jan 6, 2025 · Base Station But what exactly is a base station, and how does it work in wireless communication networks? This article explores the concept of base stations, their functions, ...



[Optimal location of base stations for cellular mobile network](#)

Jun 1, 2025 · The location of these events might not cover the large demand. In this paper, we address the classical problem of locating base stations for a mobile cellular network to serve ...

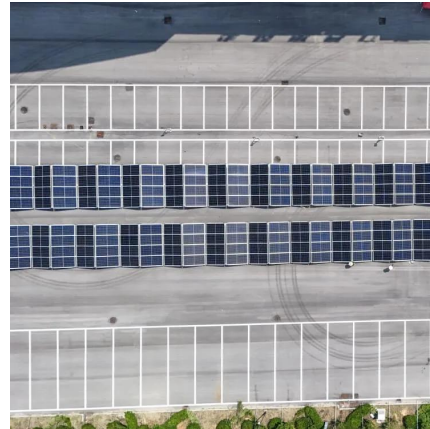


[What is a Base Station in Telecommunications?](#)

What is a Base Station? A base station is a critical component in a telecommunications network. A fixed transceiver that acts as the central communication hub for one or more



wireless mobile ...



[What Is the Role of a Base Station in Wireless Communication?](#)

Jun 27, 2025 · Base stations are the backbone of wireless communication networks, playing a pivotal role in signal transmission, network reliability, and high-speed data connectivity. As ...



User Association and Resource Allocation Algorithm of Base Station ...

Aug 19, 2024 · To make full use of spectrum resource, this paper proposes a user association algorithm in multi-band millimeter wave network, which maximizes the weighted total rate of ...



[Spatial Computing Communications for Multi-User Virtual ...](#)

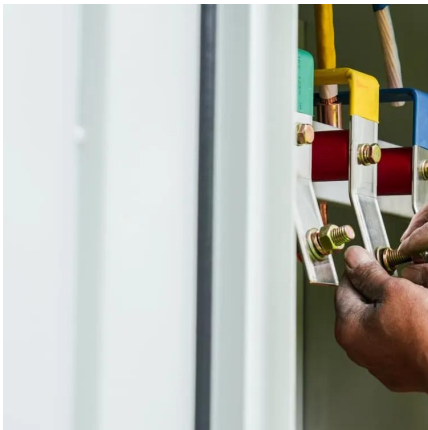
Oct 17, 2025 · SCC jointly represents the physical space, defined by users and base stations, and the virtual space, representing shared immersive environments, using a probabilistic model of ...





Base Station's Role in Wireless Communication Networks

What is a base station? A base station is a critical component of wireless communication networks. It serves as the central point of a network that connects various devices, such as ...



Joint Communication and Positioning of UAV with Multiple Base Stations

Jun 12, 2025 · It delves into UAV communication and location collaboration technology oriented towards base station sensing, with a primary focus on the communication-sensing issues of ...

Multiuser Communications With Movable-Antenna Base Station...

Nov 2, 2024 · Movable antenna (MA) is an innovative technology that facilitates the repositioning of antennas within the transmitter/receiver area to enhance channel conditions and ...



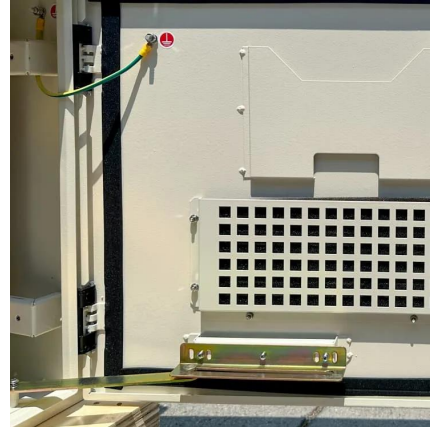
Understanding Base Stations in Mobile Communication

Nov 21, 2025 · Intro Base stations play a pivotal role in mobile telecommunications, acting as the nexus between users' cell phones and the broader network infrastructure. Understanding how ...



User Association and Small-Cell Base Station On/Off ...

Jul 18, 2019 · The macrocell base station (MBS) considers user mobility, which prevents frequent switching between users and SBSs. In the SBS on/off strategy, SBSs are turned off according ...



Base station gateway to secure user channel access at the ...

Feb 1, 2024 · Previous research implemented security on the base station focusing on the wireless communication link between the base station and the user. Previous research built ...



Contact Us

For catalog requests, pricing, or partnerships, please visit:
<https://www.llsolarenergy.co.za>

Scan QR Code for More Information



<https://www.llsoleenergy.co.za>