

Using the car s battery inverter





Overview

Can a power inverter power a car battery?

For example, solar panels and car batteries produce DC power, while most household appliances run on AC power. A power inverter can be used to convert the DC power from a solar panel or car battery into AC power that can be used to power appliances, tools, or electronic devices.

How do I connect a power inverter to my car battery?

To connect a power inverter to your car battery, you will need the following tools and materials: A power inverter that meets your power needs. A cable that can handle the power requirements of your inverter. A fuse holder and fuse that matches the cable and inverter specifications. A wrench or socket is set to tighten the cable connections.

Can you use a power inverter while a car is off?

However, using a power inverter while the car is turned off can quickly drain the battery and cause it to discharge beyond 12 volts, which is considered dead and requires jump-starting. Therefore, it is important to choose a power inverter that is appropriate for the car's battery capacity and to use it responsibly. What is a Power Inverter?



Using the car s battery inverter



[Power Inverters: How They Work And Why Your Car Needs ...](#)

May 3, 2025 · A power inverter for a car is a device that allows you to power electrical devices with your car battery. Car batteries produce direct current (DC) power, while most consumer ...

[How to Connect Power Inverter to Car Battery](#)

Apr 3, 2025 · Connecting a power inverter to a car battery is a straightforward process that allows you to power devices while on the road. By using a power inverter, you can convert your car's ...



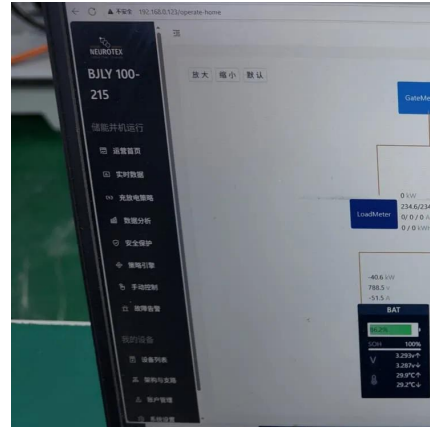
[How To Use An Inverter With A Car Battery?](#)

Apr 28, 2024 · A car battery-powered inverter provides just that, transforming your vehicle's DC power into usable AC power for a wide range of devices. This blog post will guide you through ...



[Inverter with Car: How to Power Devices on the Go](#)

Sep 4, 2025 · Your car is a marvel of modern engineering, but it doesn't have a standard wall plug. That's where the magic of an inverter with car setup comes in! This brilliant gadget is like ...



[Car Battery Inverter Guide: Power Your Devices Anywhere ...](#)

Jun 24, 2025 · A car battery inverter converts the 12V DC (direct current) from your car's battery into 120V or 230V AC (alternating current), depending on your region. This allows you to run ...



[What size inverter can you run off a car battery?](#)

Aug 11, 2025 · A typical 12-volt car battery can safely support an inverter ranging from about 150 watts up to 600 watts for regular use without harming the battery. While it is technically ...



[How to Use a Power Inverter with a Car Battery](#)

Jun 13, 2024 · Using a power inverter with a car battery can provide you with AC power on the go, enabling you to use household appliances and electronic devices during road trips, camping, ...





[Inverter for Car: Everything You Need to Know Before You ...](#)

Jun 17, 2025 · What Can You Power with a Car Inverter? When it comes to using an inverter for car, one of the first questions drivers ask is: What exactly can I plug into this thing? The short ...

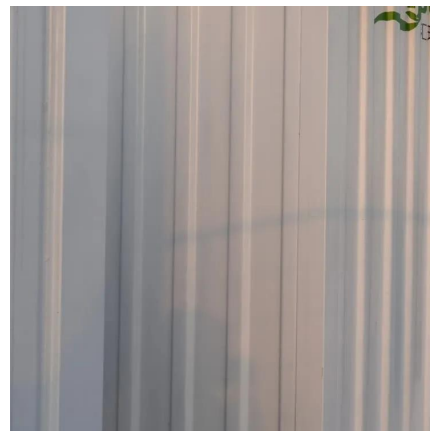


[How Big of an Inverter Can My Car Battery Handle?](#)

Mar 26, 2025 · Tip: When using a high-power inverter, if the load exceeds the capacity of the car battery, it is recommended to upgrade to a high-performance deep-cycle battery and consider ...

[Power Inverter for Car: What It Is and Why You Need One](#)

Aug 11, 2025 · Tips for Using Your Car Power Inverter Avoid running the inverter for long periods without the engine running--similar to how you'd avoid draining storage batteries in ...



Contact Us

For catalog requests, pricing, or partnerships, please visit:
<https://www.llsolarenergy.co.za>



Scan QR Code for More Information



<https://www.lsolarenergy.co.za>