

Valletta Communications Base Station EMS





Overview

What is an EMS communication system?

The EMS communication system is a complex network designed to facilitate the rapid and efficient flow of information between various stakeholders. Key components include: Base Station: A stationary radio located in a strategic position, such as a hospital, dispatch center, or a high vantage point, enabling wide-area communication coverage.

How do EMS providers communicate?

The primary method of communication for EMS providers continues to be radio communications. The Federal Communications Commission (FCC) assigns and licenses specific radio frequencies for use by EMS. Here's how radio communication plays a role in the different phases of an EMS call: Acknowledge call receipt from dispatch.

What is a base station?

A base station is a radio operated from a fixed site such as a dispatch center, hospital, or some other location. It usually runs off community electrical power and transmits at much higher power than smaller, portable radios. Alternative power in the form of generators or a set of batteries are usually available.

How do you call EMS?

In many states, there are established training and performance standards for dispatch personnel. The most common method for accessing the EMS system is the telephone. In the late 70's and early 80's, callers became able to call 9-1-1 instead of worrying which number to call.



Valletta Communications Base Station EMS



Design Considerations and Energy Management System for ...

Jun 20, 2024 · This paper presents the design considerations and optimization of an energy management system (EMS) tailored for telecommunication base stations (BS) powered by ...

Smart Power of Communication Base Station

Using 5G Internet of things technology, combined with data analysis, to improve the traditional power management level, and to achieve the visible, measurable, controllable, and linkage of ...



Emergency Communications Solution

Light weight, High integrationDiverse Terminal
RangeRich ServicesAd-hoc SolutionAd-hoc
Solution as ExtensionQuick StartupServices
DiversityOne system,Multi-purposeFlexible
NetworkingCOW and ECV SolutionDeep
customizationLight weight design, one or two
person backpack High integration, including all
NEs and serversSee more on en.calтта WI
Technical Colleges Open Press

Chapter 2: Preparatory Part 2 - Emergency ...

Base Station: A stationary radio located in a strategic position, such as a hospital, dispatch center, or a high vantage point, enabling wide-area ...



WHAT ARE THE DIFFERENT TYPES OF COMMUNICATIONS EQUIPMENT USED IN EMS

Valletta Communications Energy Storage Battery
What is battery management system? Battery management system used in the field of industrial and commercial energy storage.. How do ...

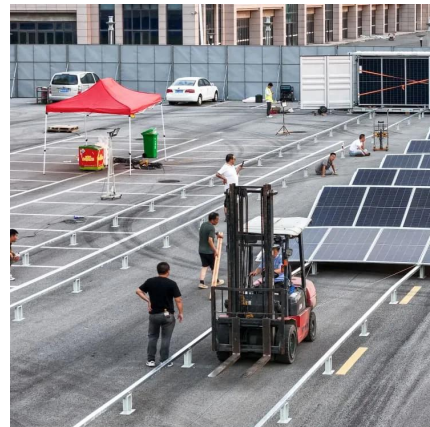


Chapter 2: Preparatory Part 2 - Emergency Medical Responder

Base Station: A stationary radio located in a strategic position, such as a hospital, dispatch center, or a high vantage point, enabling wide-area communication coverage.

Communications-EMT -- Hopper Institute®

Communication in EMS is essential. Patients must be able to access the system, the system must be able to dispatch units, EMTs must have a means of communicating with medical direction ...



Contact Us

For catalog requests, pricing, or partnerships, please visit:
<https://www.llsolarenergy.co.za>



Scan QR Code for More Information



<https://www.llsoleenergy.co.za>