

# **Voltage square wave inverter output current**





## Overview

---

What is the full-bridge configuration of a square wave inverter?

The full-bridge configuration of a Square Wave Inverter is shown in Fig. 1 (a). Thyristors Th 1 and Th 2 are fired during the first half-cycle and thyristors Th 3 and Th 4 are fired during the second half-cycle of the output voltage. The output voltage is a square wave of amplitude  $V$  as shown in Fig. 1 (b).

What is a square wave inverter?

The square wave inverter is the simplest and least expensive, but it is seldom used today. One drawback to square wave and modified sine wave inverters is that they tend to produce electrical noise (interference) that can be troublesome for electronic equipment.

What is the power rating of a square wave inverter?

The power rating of a square wave inverter refers to the maximum amount of power it can supply to its load. It's essential to select an inverter with a power rating that matches the needs of the intended load. The load type has a significant influence on the performance of a square wave inverter.

What is an inverter bridge?

The inverter bridge (H-bridge) is a method of producing a square wave from a DC voltage. The operation of a basic H-bridge is enhanced to produce the misnamed modified sine wave, which is shown in Figure 5. (Perhaps modified square wave would be a better name.)



## Voltage square wave inverter output current

---



[Inverter Types & Working Principle , Sine Wave, Square Wave...](#)

2 days ago · The article provides an overview of inverter technology, explaining how inverters convert DC to AC power and detailing the different types of inverters--sine wave, square ...

### CHAPTER 2

Dec 22, 2023 · A standard single-phase voltage or current source inverter can be in the half-bridge or full-bridge configuration. The single-phase units can be joined to have three-phase or ...



[Inverter Types & Working Principle , Sine Wave, Square ...](#)



How Does An Inverter Work?Modular Inverters  
SystemSquare Wave Inverter WorkingModified  
Sine Wave Inverter WorkingSingle-Phase Sine  
Wave Inverter WorkingBasic Operation of The  
Sine Wave InverterThree-Phase Inverter  
WorkingA switching circuit is used in the  
conversion of DC voltage to an alternating (or  
bipolar) square wave voltage. One method is the  
use of the inverter bridge (also known as an H-  
bridge), which is illustrated in Figure 4. The  
switch symbols are used to represent switching  
transistors (IGBTs or MOSFETs) or other types of  
electronic switching devices. See more on  
electricalacademia psu

### 6.4. Inverters: principle of operation and parameters





The three most common types of inverters made for powering AC loads include: (1) pure sine wave inverter (for general applications), (2) modified square wave inverter (for resistive, ...

### [An overall introduction of inverter waveform and the ...](#)

Dec 20, 2023 · This article will give you a detailed introduction and comparison of inverter waveform, including the principles of generating different waveforms, and comparison between ...



### **UNIT V INVERTERS**

Sep 12, 2025 · Single Phase Full Bridge Inverter for R-L load: A single-phase square wave type voltage source inverter produces square shaped output voltage for a single-phase load. Such ...

### [Square Wave Inverter - Definition, Circuit...](#)

Jul 10, 2021 · The full-bridge configuration of a Square Wave Inverter is shown in Fig. 1 (a). Thyristors Th 1 and Th 2 are fired during the first half ...



### [Square Wave Inverter - Electricity - Magnetism](#)

Oct 26, 2023 · Square wave inverters have high harmonic content due to their abrupt voltage transitions. Harmonic distortion can cause various issues, including increased heating in ...



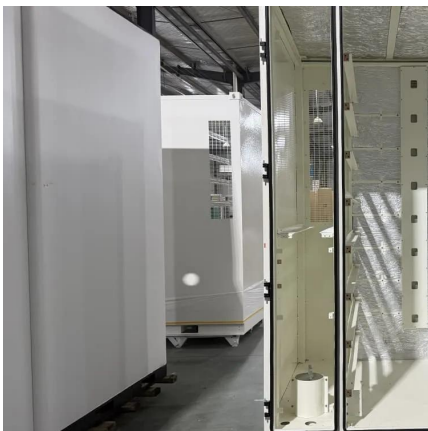
### [The inverter output voltage square wave](#)

Download scientific diagram , The inverter output voltage square wave from publication: Extension of Zero Voltage Switching range for series resonant converter , This paper describes the ability



### [Square Wave Inverter - Definition, Circuit Diagram & Waveform](#)

Jul 10, 2021 · The full-bridge configuration of a Square Wave Inverter is shown in Fig. 1 (a). Thyristors Th 1 and Th 2 are fired during the first half-cycle and thyristors Th 3 and Th 4 are ...



### [Full Bridge Inverter: Circuit, Waveforms, ...](#)

Jun 2, 2025 · A full bridge inverter is a switching device that generates square wave AC voltage in the output on application of DC voltage.





## Lesson No

Feb 4, 2019 · 3-Phase Voltage Source Inverter With Square Wave Output After completion of this lesson the reader will be able to: Explain the operating principle of a three-phase square wave ...



## [Full Bridge Inverter: Circuit, Waveforms, Working And ...](#)

Jun 2, 2025 · A full bridge inverter is a switching device that generates square wave AC voltage in the output on application of DC voltage.



## [6.4. Inverters: principle of operation and parameters](#)

The three most common types of inverters made for powering AC loads include: (1) pure sine wave inverter (for general applications), (2) modified square wave inverter (for resistive, ...

## Contact Us

For catalog requests, pricing, or partnerships, please visit:  
<https://www.llsolarenergy.co.za>



## Scan QR Code for More Information



<https://www.lsolarenergy.co.za>