

# **What are the base station power supply devices**





## Overview

---

What is base station Power?

Base station power refers to the output power level of base stations, which is defined by specific maximum limits (24 dBm for Local Area base stations and 20 dBm for Home base stations) and includes tolerances for deviation from declared power levels, as well as specifications for total power control dynamic range. How useful is this definition?

.

What is a base station & a PV powering Unit?

The base station uses radio signals to connect devices to network as a part of traditional cellular telephone network and solar powering unit is used to power it. The PV powering unit uses solar panels to generate electricity for base stations in areas with no access to grid or areas connected to unreliable grids.

What are the components of a base station?

The base station will have one or more RF antennas installed to transmit and receive RF signals from other devices. The block diagram of a base station typically includes the following key components: Baseband Processor: The baseband processor too deals with different communication protocols and interfaces with mobile network infrastructure.

How much power does a base station have?

Maximum base station power is limited to 38 dBm output power for Medium-Range base stations, 24 dBm output power for Local Area base stations, and to 20 dBm for Home base stations. This power is defined per antenna and carrier, except for home base stations, where the power over all antennas (up to four) is counted.



## What are the base station power supply devices

---

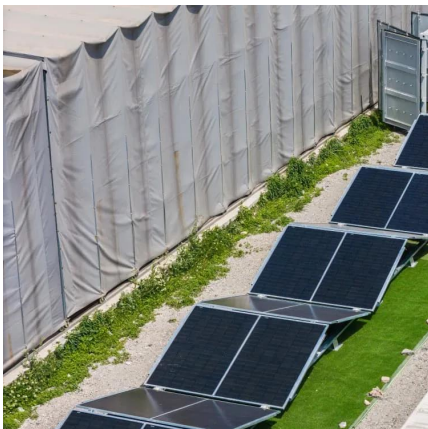
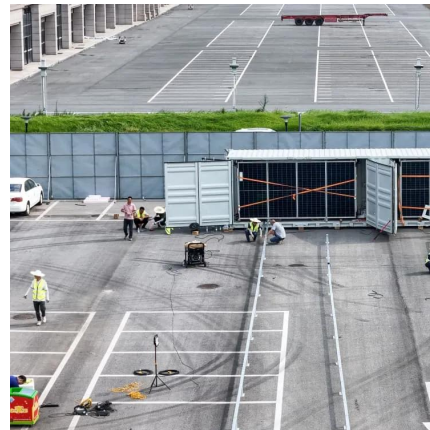


### [Power Supply Solutions for Wireless Base Stations Applications](#)

Power supplies can be employed in each of the three systems that compose wireless base stations. These three systems are known as the environmental monitoring system, the data ...

### [What is 5G Communication Base Station Backup Power Supply ...](#)

Oct 5, 2025 · A 5G communication base station backup power supply is a device or system designed to provide emergency power to 5G base stations when the primary power source ...



### [An Introduction to 5G and How MPS Products Can ...](#)

Feb 11, 2025 · The AAU consists of a series of power supply devices to ensure that all signals are received, processed, and transmitted. For the receivers and transmitters, it is vital to have a ...

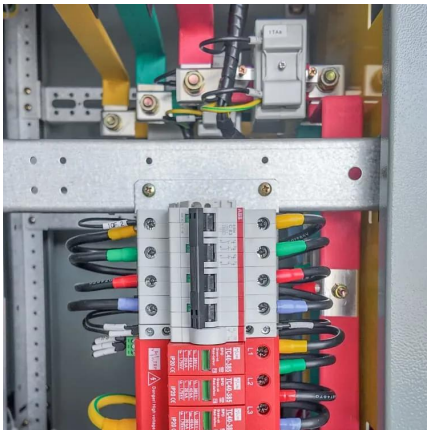
### [5G macro base station power supply design strategy and ...](#)

Oct 24, 2024 · For power design engineers in the 5G era, new topologies and new materials must be familiar, because new material devices such as silicon carbide and gallium nitride have not ...



### Selecting the Right Supplies for Powering 5G Base Stations

These tools simplify the task of selecting the right power management solutions for these devices and, thereby, provide an optimal power solution for 5G base stations components.



### Basic components of a 5G base station

Cellular base stations (BSs) are equipped with backup batteries to obtain the uninterruptible power supply (UPS) and maintain the power supply reliability. While maintaining the reliability, ...



## Contact Us

---

For catalog requests, pricing, or partnerships, please visit:  
<https://www.llsolarenergy.co.za>



## Scan QR Code for More Information



<https://www.llsoleenergy.co.za>