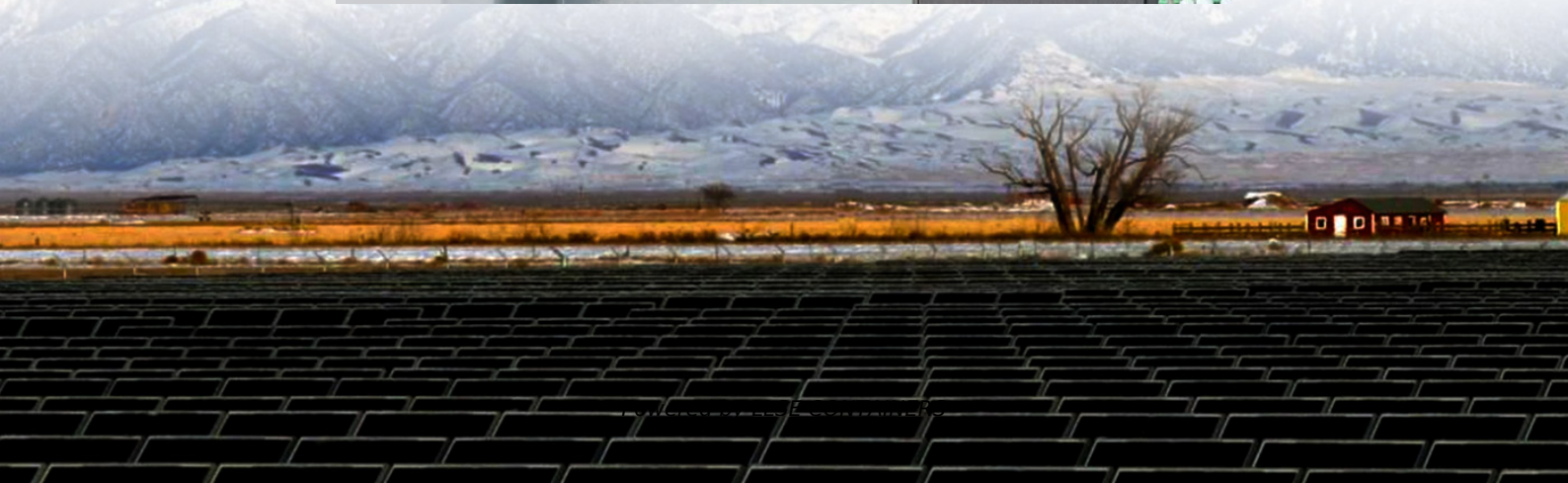


# What are the basic infrastructure of power base stations





## Overview

---

What is a base station in a telecommunications network?

A base station is a critical component in a telecommunications network. A fixed transceiver that acts as the central communication hub for one or more wireless mobile client devices. In the context of cellular networks, it facilitates wireless communication between mobile devices and the core network.

Why are base stations important?

Base stations are the backbone of modern telecommunications networks, providing the essential infrastructure for wireless communication. They enable mobile devices to connect to the network, manage traffic efficiently, and ensure robust and reliable connectivity across wide areas.

What are the components of a base station?

The base station will have one or more RF antennas installed to transmit and receive RF signals from other devices. The block diagram of a base station typically includes the following key components: Baseband Processor: The baseband processor too deals with different communication protocols and interfaces with mobile network infrastructure.

What is a base station and how does it work?

A base station is a fixed point of communication between mobile devices and the wider telecom network. It transmits and receives radio signals, enabling your phone to access voice, data, and internet services. Together, thousands of base stations form a seamless web of coverage known as a cellular network. How Does It Work?



## What are the basic infrastructure of power base stations

---



### [Breaking Down Base Stations - A Guide to ...](#)

May 31, 2022 · The main power source for the majority of telecom sites is a standard grid connection. This power supply relies on various meters and ...

### [What is a Base Station in Telecommunications?](#)

What is a Base Station? A base station is a critical component in a telecommunications network. A fixed transceiver that acts as the central communication hub for one or more wireless mobile ...



### [Breaking Down Base Stations - A Guide to Cellular Sites](#)

May 31, 2022 · The main power source for the majority of telecom sites is a standard grid connection. This power supply relies on various meters and power modifiers to manage a ...



### What Is A Base Station?

Apr 22, 2024 · A base station is an integral component of wireless communication networks, serving as a central point that manages the transmission and reception of signals between ...

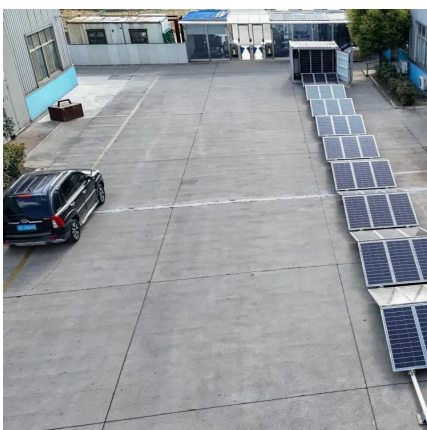


## Base Stations

Jul 23, 2025 · Cost and infrastructure: Base station construction, as well as retrofitting base stations for deeper penetration requiring additional investment in infrastructure like land ...

### 1. What Is a Base Station and What Are Its Core Components?

The Importance of Base Station Infrastructure (Linking to EverExceed Value) Whether macro sites or small cells, all base stations rely on robust infrastructure including: Power and backup ...



### What Does a Base Station Do and Why Is It Essential for ...

Sep 5, 2025 · Base stations not only enable today's communication, but also pave the way for tomorrow's networks--supporting higher speeds, lower latency, and new services. At ...





### Basic components of a 5G base station

Cellular base stations (BSs) are equipped with backup batteries to obtain the uninterruptible power supply (UPS) and maintain the power supply reliability. While maintaining the reliability, ...



### Base Stations and Cell Towers: The Pillars of Mobile ...

May 16, 2024 · Base stations and cell towers are critical components of cellular communication systems, serving as the infrastructure that supports seamless mobile connectivity. These ...

### **Power Base Station**

The transmitter characteristics define RF requirements for the wanted signal transmitted from the UE and base station, but also for the unavoidable unwanted emissions outside the transmitted ...



### An Introduction to 5G and How MPS Products Can ...

Feb 11, 2025 · The infrastructure for 5G requires a dense network of cells and base stations, which can be expensive and require a long development time due to coordination between ...



## Contact Us

---

For catalog requests, pricing, or partnerships, please visit:  
<https://www.llsolarenergy.co.za>

## Scan QR Code for More Information



<https://www.llsolarenergy.co.za>