

What are the inverters with high peak power





Overview

What is peak power in inverter?

Peak power is usually two to three times the rated power. The rated power is the power at which the inverter is stabilized over a long period, whereas the peak power is only used for short periods of high power demand. Learn More: How does an inverter work? What causes the inverter to overload?

.

What happens if an inverter overloads?

If the total load exceeds this value, the inverter will be damaged due to constant overloading. What is Peak Power?

Peak Power, also known as Surge Power, represents the maximum power value that the inverter can deliver in a short period (usually 0.5~5 seconds).

When can an inverter start?

Because these inductive loads require a large current to start at the moment of startup, the appliance can start normally only when the inverter peak power is greater than the starting power of the appliance. Under normal circumstances, the peak power is equal to 2 times the rated power. 2. Different types of load.

How long does an inverter peak power last?

A: The peak power of an inverter generally only lasts for a few seconds, usually between 1 and 5 seconds, depending on the model and design. It is designed to cope with transient surges when an appliance starts, not for long periods. Understand the key differences between inverter peak power and rated power.



What are the inverters with high peak power

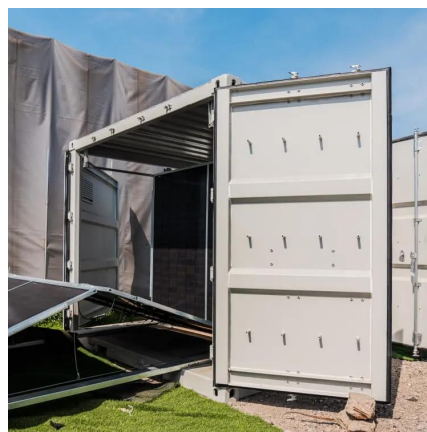


[Useful guide to inverter peak power and how to choose an ...](#)

Dec 17, 2023 · In this article, we will provide an overall introduction to inverter peak power, including what it is and how it's different on various kinds of load. And also, we will list some ...

[Peak Power Meaning for Solar Systems, Inverters, and Batteries](#)

Nov 14, 2025 · Introduction The peak power meaning in solar and battery systems, refers to the most significant amount of power required or given by a device for a very short time. This " ...



[What does the peak power of the power inverter mean and ...](#)

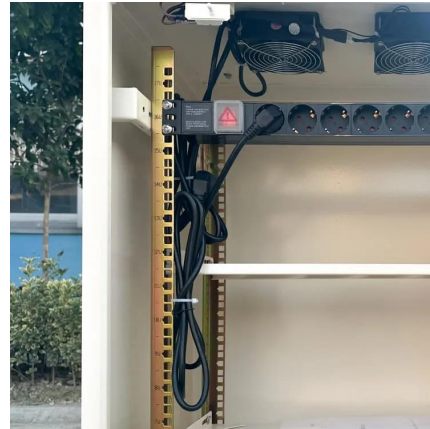
Dec 11, 2020 · The starting power of some electrical appliances is several times the power required during normal operation, but it only lasts for a short time. The significance of peak ...

[Discover the Sunny Highpower PEAK3, SMA America](#)

Sunny Portal powered by ennexOS One platform for all PV systems Remotely access, control and troubleshoot your power plant and PEAK3 inverters Remotely configure PEAK3 inverters to



...



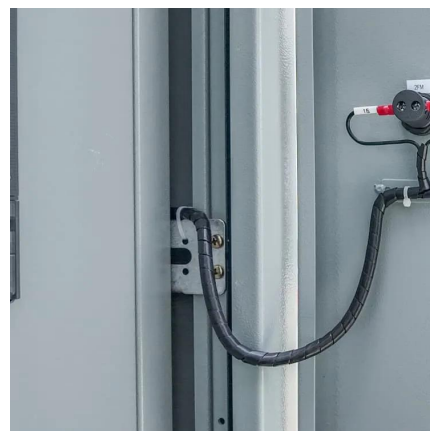
[Useful guide to inverter peak power and how ...](#)

Dec 17, 2023 · In this article, we will provide an overall introduction to inverter peak power, including what it is and how it's different on various kinds of ...



[Reactive Power Control of PV Inverters in Active Distribution ...](#)

Jul 28, 2023 · Photovoltaic (PV) systems can reduce greenhouse gas emissions while providing rapid reactive power support to the electric grid. At the distribution grid level, the PV inverters ...



[What Does Peak Power Mean in a Pure Sine Wave Inverter?](#)

Apr 21, 2025 · Understanding Peak Power in a Pure Sine Wave Inverter When choosing a pure sine wave inverter, one of the most important yet often misunderstood specifications is "peak ...



[How to Choose the Right Solar Inverter in 2025: A Complete ...](#)

Jan 21, 2025 · Modern string inverters with power optimizers deliver up to 99% peak efficiency, minimizing energy loss. Hybrid Inverters Hybrid inverters combine the functions of solar ...

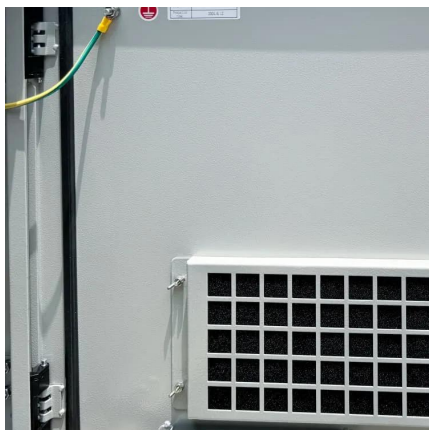


[Inverter Peak Power vs Rated Power: What it is and Why It ...](#)

Apr 21, 2025 · Understand the key differences between inverter peak power and rated power. Discover the importance of both, how they affect your appliances.

[The Essential Guide to Peak Power Inverters in China](#)

Jan 6, 2025 · As the demand for renewable energy solutions continues to grow, peak power inverters play a crucial role in ensuring efficient power conversion and management. With ...



[Best Hybrid Inverters 2025](#)

Mar 16, 2025 · The larger 8 & 10kW single-phase inverters have continuous power ratings of 8 & 10kVA, with reasonable peak (surge) backup power ratings of 13.6kVA, enabling backup of ...



Contact Us

For catalog requests, pricing, or partnerships, please visit:
<https://www.llsolarenergy.co.za>

Scan QR Code for More Information



<https://www.llsolarenergy.co.za>