

# What are the requirements for power generation at base stations





## Overview

---

What is base load power generation?

The base load power generation can rely on both renewable or non-renewable resources. Non-renewable resources (fossil fuels) include: coal, nuclear fuels. Renewable resources include: hydropower, geothermal heat, biomass, biogas, and also a solar thermal resource with associated energy storage.

Can a base station power system be optimized according to local conditions?

The optimization of PV and ESS setup according to local conditions has a direct impact on the economic and ecological benefits of the base station power system. An improved base station power system model is proposed in this paper, which takes into consideration the behavior of converters.

What are the station service power requirements for combustion engine generating plants?

Station service power requirements for combustion turbine and internal combustion engine generating plants are such that 208 or 480 volts will be used. 1.1.4 DISTRIBUTION SYSTEM. The primary distribution system with central in-house generation should be selected in accordance with the owner's requirements. 1.2.1 GENERAL.

Which energy systems can be used for base load electricity generation?

Hydropower and geothermal power can also be used for base load electricity generation if those resources are regionally available. The renewable energy systems, such as solar and wind, are most suitable for intermediate load plants.



## What are the requirements for power generation at base stations

---



### [Improved Model of Base Station Power System for the ...](#)

Nov 29, 2023 · However, the widespread deployment of 5G base stations has led to increased energy consumption. Individual 5G base stations require 3-4 times more power than fourth ...

### [Understanding China's Power Stations: A Comprehensive Guide to Energy](#)

Dec 25, 2024 · This has driven significant investment in diverse power generation methods, making it a global leader in both traditional and renewable energy sources. This guide ...



### [Strategy of 5G Base Station Energy Storage Participating ...](#)

Oct 3, 2023 · With the increasing proportion of fluctuating renewable energy generation, more new flexible FR resources have been noticed. In recent years, 5G has grown rapidly in scale ...



### [An Introduction to Electrical Generators for Power Plants](#)

Oct 5, 2020 · Station service power requirements for combustion turbine and internal combustion engine generating plants are such that 208 or 480 volts will be used.



### Technical Specifications of Onshore Power Stations and Gas ...

Jan 3, 2025 · Onshore power stations can operate in different modes to meet various power generation requirements and ensure reliable performance. The most common operating ...



### How much energy storage battery is used in base stations?

Aug 25, 2024 · Navigating the complexities of energy storage requirements for base stations elucidates the dynamic interplay between capacity, technology, regulations, and sustainability. ...



### 9.1. Base Load Energy Sustainability . EME 807: Technologies ...

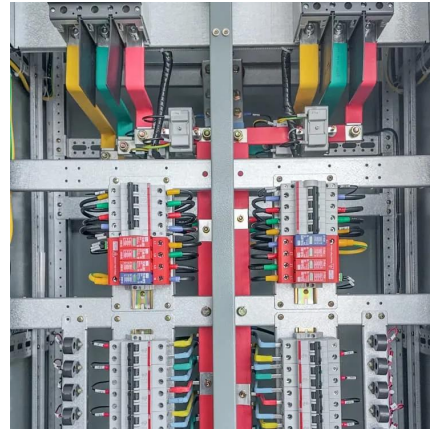
The base load power generation can rely on both renewable or non-renewable resources. Non-renewable resources (fossil fuels) include: coal, nuclear fuels. Renewable resources include: ...





### [Optimal Electricity Dispatch for Base Stations with Battery ...](#)

Jul 11, 2022 · With the development of newer communication technology, considering the higher electricity consumption and denser physical distribution, the base stations become important ...



### [Emergency Diesel Generator Backup Power Systems for ...](#)

Sep 14, 2020 · Quantifying System-Level Reliability2 A military base's critical mission depends on having power across multiple buildings. Three base level reliability metrics are illustrated ...

## Contact Us

---

For catalog requests, pricing, or partnerships, please visit:  
<https://www.llsolarenergy.co.za>

**Scan QR Code for More Information**



<https://www.lsolarenergy.co.za>