

What base station does Yuante Communication use





Overview

What is a 5G base station?

The 5G base station is the core device of the 5G network, providing wireless coverage and realizing wireless signal transmission between the wired communication network and the wireless terminal. The architecture and shape of the base station directly affect how the 5G network is deployed.

What is a base station in telecommunications?

In telecommunications, a base station is a fixed transceiver that is the main communication point for one or more wireless mobile client devices. A base station serves as a central connection point for a wireless device to communicate.

How do base stations work?

Base stations use antennas mounted on cell towers to send and receive radio signals to and from mobile devices within their coverage area. This communication enables users to make voice calls, send texts, and access data services, connecting them to the wider world. Network Management and Optimization.

What are the different types of 5G NR base stations?

This article describes the different classes or types of 5G NR Base Stations (BS), including BS Type 1-C, BS Type 1-H, BS Type 1-O, and BS Type 2-O. 5G NR (New Radio) is the latest wireless cellular standard, succeeding LTE/LTE-A. It adheres to 3GPP specifications from Release 15 onwards. In 5G NR, the Base Station (BS) is referred to as a gNB.



What base station does Yuante Communication use

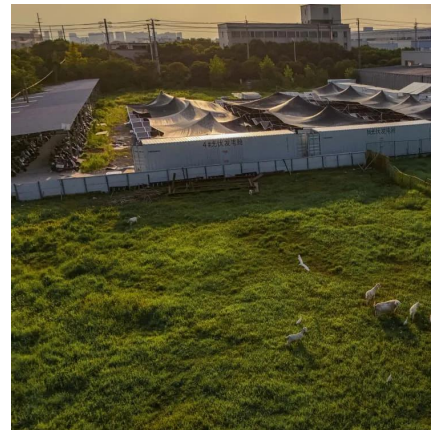


[5G RAN Architecture: Nodes And Components](#)

Jan 24, 2023 · Discover 5G RAN and vRAN architecture, its nodes & components, and how they work together to revolutionize high-speed, low-latency wireless communication.

[Into Yuante: NBchao Yuante Gas Detector production base ...](#)

2018/9/12, NBchao and his party visited Yuante's production base in Shenzhen. This article is documented in graphic form. Please follow us into Yuante's Gas detection instrument ...



[Base Stations and Cell Towers: The Pillars of Mobile ...](#)

May 16, 2024 · Base stations use antennas mounted on cell towers to send and receive radio signals to and from mobile devices within their coverage area. This communication enables ...

What is a base station?

Mar 4, 2021 · What is a base station? In telecommunications, a base station is a fixed transceiver that is the main communication point for one or more wireless mobile client devices. A base ...



[Complete Guide to 5G Base Station Construction , Key Steps, ...](#)

Nov 17, 2024 · Explore how 5G base stations are built--from site planning and cabinet installation to power systems and cooling solutions. Learn the essential components, technologies, and ...



[Base Station's Role in Wireless Communication Networks](#)

What is a base station? A base station is a critical component of wireless communication networks. It serves as the central point of a network that connects various devices, such as ...



[Global 5G Base Station Industry Research Report](#)

The 5G base station is the core device of the 5G network, providing wireless coverage and realizing wireless signal transmission between the wired communication network and the ...





What Does a Base Station Do and Why Is It Essential for ...

Sep 5, 2025 · A base station is a fixed point of communication between mobile devices and the wider telecom network. It transmits and receives radio signals, enabling your phone to access ...



Contact Us

For catalog requests, pricing, or partnerships, please visit:
<https://www.llsolarenergy.co.za>

Scan QR Code for More Information



<https://www.llsolarenergy.co.za>