

# **What battery is used for the inverter**





## Overview

---

What type of batteries are used in inverter systems?

The most commonly used batteries in inverter systems are tubular lead-acid batteries and flat plate lead-acid batteries, with lithium-ion batteries becoming more popular in recent years. Tubular batteries are preferred for their deep discharge capacity and long life, making them ideal for homes with frequent power cuts.

What is a lithium battery for inverter?

Lithium offers unmatched performance, a longer lifespan, and better efficiency than traditional batteries. Whether you're setting up a home backup system, solar power solution, or mobile energy unit, this guide will walk you through everything you need to know about lithium batteries for inverters. Part 1.

Do inverters need batteries?

For most residential and small commercial setups, the traditional battery and power inverter combo is the preferred choice to ensure continuous power supply during blackouts. So, while some inverter types do not require batteries, if your priority is uninterrupted backup power, investing in a quality battery in inverter system is essential.

What is an inverter battery?

An inverter battery is a specially designed energy storage solution that powers an inverter during electricity outages. Unlike automotive or starter batteries—which provide short bursts of high current to start engines—inverter batteries are built for deep-cycle performance, meaning they release a steady amount of energy over a longer duration.



## What battery is used for the inverter

---



### [How to Choose the Right Battery for Your Inverter - A& E ...](#)

Aug 6, 2025 · 1. Understand the Types of Inverter Batteries There are three main types of batteries commonly used with inverters: Tubular Batteries: Best for long backup and heavy ...

### [Best Battery Group To Use To Power Inverter \[Updated: ...](#)

Aug 4, 2025 · The best battery group for powering inverters for home use typically includes Group 27 or Group 31 batteries. These battery sizes are common in deep-cycle applications, where ...



### [Different Types of Batteries for Inverters. Type of batteries](#)

Dec 15, 2023 · Inverters play a crucial role in providing backup power during electrical outages, making them an essential component in homes and businesses. However, the effectiveness of ...

### [How to Choose the Best Inverter with Battery for Home ...](#)

Dec 3, 2025 · Learn what to look for in an inverter with battery, including types, key specs, and value tips to make a smart purchase for reliable backup power.



### [Battery Choices for Home Power Inverters: What ...](#)

Sep 19, 2024 · Explore the different types of batteries (lead-acid, lithium-ion, etc.) used with home power inverters. Discuss the pros and cons of each type, their compatibility with various ...

### [Complete Guide to Inverter Batteries - NPP POWER](#)

Oct 23, 2024 · What exactly is an inverter battery? Inverter batteries perform several critical functions: Energy Storage They store electrical energy for future use, offering backup power ...



### [The Ultimate Guide to Choose Batteries for Inverter](#)

Aug 24, 2023 · What type and size of battery is best for inverter? Lead acid, gel and lithium battery, what's the difference? Keep reading and choose the best battery for your inverter.





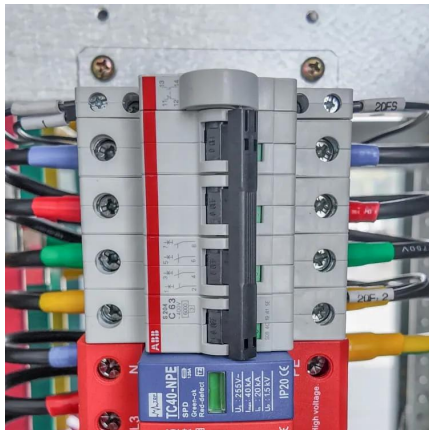
## [What Battery Is Best for Inverters? A Comprehensive Guide](#)

Dec 11, 2023 · How Do Lithium-Ion Batteries Compare for Use with Inverters? Advantages of Lithium-Ion Batteries Lithium-ion batteries are becoming increasingly popular for inverter ...



## [Best Battery Options to Use with an Inverter](#)

Jan 14, 2024 · Lastly, consider the type of battery you want to use. There are several options available, including lead-acid batteries, lithium-ion batteries, and even saltwater batteries. ...



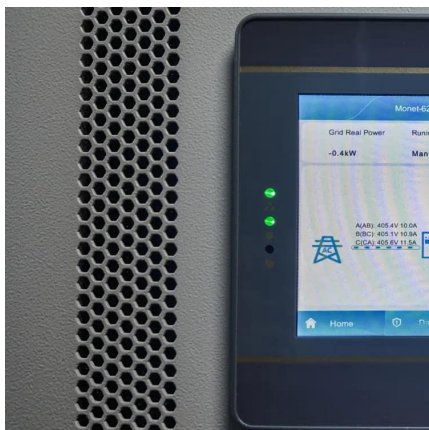
## [Ultimate Guide to Battery in Inverter: Choose & Maintain Right](#)

Jul 7, 2025 · Discover how to choose, maintain, and maximize your battery in inverter for reliable backup power. Expert tips on inverter batteries, lifespan, and safety included!



## [What battery to use with 1000W inverter?](#)

Oct 24, 2024 · When using a 1000W inverter, it is crucial to choose the right battery. The inverter converts the battery's direct current (DC) into the alternating current (AC) we commonly use, ...





## Contact Us

---

For catalog requests, pricing, or partnerships, please visit:  
<https://www.llsolarenergy.co.za>

### Scan QR Code for More Information



<https://www.llsolarenergy.co.za>