

What does solar container battery mw mean





Overview

What does mw mean in energy storage?

In energy storage systems, MW indicates instantaneous charging/discharging capability. Example: A 1 MW system can charge/discharge 1,000 kWh (1 MWh) per hour, determining its ability to handle short-term high-power demands, such as grid frequency regulation or sudden load responses. 2. MWh (Megawatt-hour) – The “Endurance” of Energy Storage Systems.

What is a MW/MWh system?

System Specifications in “MW/MWh” Combinations Energy storage projects are often labeled in the format “XX MW/XX MWh” (e.g., 100 MW/200 MWh or 125 kW/261 kWh for modular cabinet systems). The ratio of capacity to power (e.g., $200 \text{ MWh} \div 100 \text{ MW} = 2 \text{ hours}$) defines the duration of storage, reflecting continuous discharge time.

How many kilowatt-hours is 1 MWh?

1 MWh = 1,000 kWh (i.e., 1,000 kilowatt-hours). The MWh value of a system reflects its total energy storage capacity. Example: A 2 MWh battery can store 2,000 kWh of energy. If discharged at 1 MW, it can operate for 2 hours. Case Study: The 0.5 MW/2 MWh commercial and industrial energy storage system at EITAI’s Guangzhou facility.

What is a battery energy storage system?

A Battery Energy Storage System (BESS) is a sophisticated setup that stores surplus electricity in rechargeable batteries, usually lithium-ion, and supplies it back to the grid or users when required. BESS mitigate issues such as peak loads, frequency stabilization, and excess renewable energy (waste.energy.gov).



What does solar container battery mw mean



[Distinguishing MW from MWh in Energy Storage Systems](#)

In the energy storage sector, MW (megawatts) and MWh (megawatt-hours) are core metrics for describing system capabilities, yet confusion persists regarding their distinctions and ...

[Demystifying Energy Storage System Capacity Specifications: MW...](#)

Well, here's the thing: understanding capacity specification units has become crucial as global battery storage installations surged by 87% in Q1 2025 according to the fictional but credible ...



[What are MW and MWh in renewable energy?](#)

Aug 7, 2025 · What Are MW and MWh? A Simple Guide to Understanding Power and Energy in Wind, Solar, and Storage Projects In the world of ...

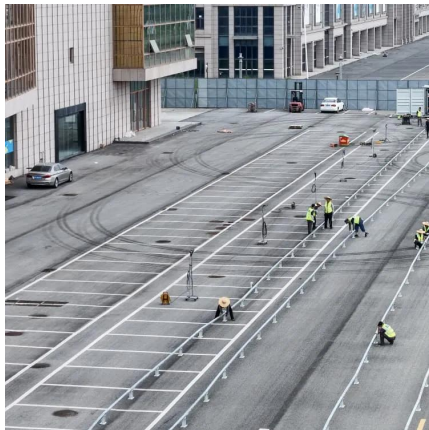
[What are MW and MWh in renewable energy?](#)

Aug 7, 2025 · What Are MW and MWh? A Simple Guide to Understanding Power and Energy in Wind, Solar, and Storage Projects In the world of renewable energy--especially in wind, solar, ...



[10.2 Key Metrics and Definitions for Energy Storage](#)

Sometimes you will see capacity of storage specified in units of power (watt and its multiples) and time (hours). For example: 60 MW battery system with 4 hours of storage. What does it mean? ...



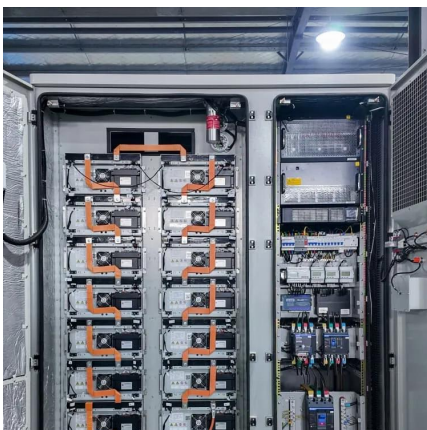
Battery Storage

Oct 30, 2019 · A key factor in understanding battery is the storage capacity. Unlike solar or gas generators, batteries need to be charged from the grid and then discharge back to the grid. ...



[MW-level Containerized Battery Energy ...](#)

Sep 5, 2023 · MW -scale container battery energy storage system uses lithium iron phosphate batteries as energy carriers and utilizes PCS for ...





[Understanding Battery Energy Storage Systems \(BESS\): The ...](#)

Jul 17, 2025 · India's Leh Ultra Mega Solar PV-BESS integrates massive solar with storage, prioritizing long-duration for isolated areas. Australia's Waratah Super Battery, at 850 MW, ...

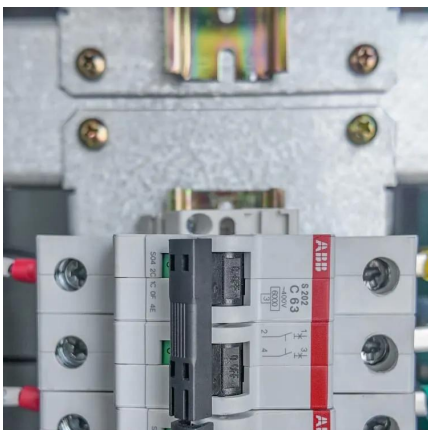


[MW-level Containerized Battery Energy Storage System](#)

Sep 5, 2023 · MW -scale container battery energy storage system uses lithium iron phosphate batteries as energy carriers and utilizes PCS for charge and discharge, enabling various energy ...

[What Does Energy Storage Capacity MW Mean? A 2025 ...](#)

Sep 22, 2022 · Grid stability: When clouds block solar panels suddenly, a 200 MW battery farm can jump in faster than you can say "blackout prevention" Project sizing: That new Tesla ...



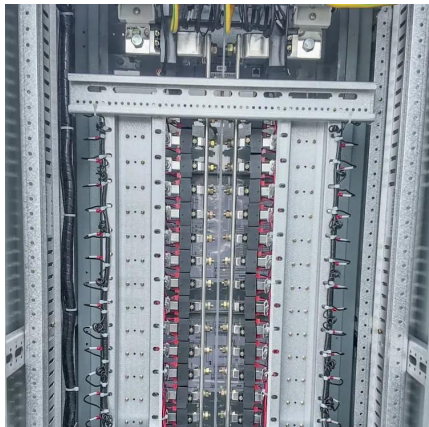
[MW level container type battery energy storage system](#)

The MW level containerized battery energy storage system (CBESS) is an important support for the future development of the power grid, which can effectively improve the stability, reliability, ...



[5mwh battery compartments the ultimate energy container ...](#)

Jun 27, 2025 · In the evolving landscape of renewable energy, 5MWh battery compartments housed within robust energy containers have emerged as a transformative solution for solar ...



[10.2 Key Metrics and Definitions for Energy ...](#)

Sometimes you will see capacity of storage specified in units of power (watt and its multiples) and time (hours). For example: 60 MW battery system ...

Contact Us

For catalog requests, pricing, or partnerships, please visit:
<https://www.llsolarenergy.co.za>

Scan QR Code for More Information



<https://www.llsoleenergy.co.za>