

# **What is a grid-connected inverter**





## Overview

---

What is a grid tied inverter?

A grid-tied inverter, also known as a grid-connected or on-grid inverter, is the linchpin that connects your solar panels to the utility grid. Its primary function is to convert the direct current (DC) electricity generated by your solar panels into alternating current (AC) electricity that can be used to power your home or business.

How does a grid connected solar inverter work?

The grid-connected solar inverter operates according to a simple basic electrical theory. From a higher potential to a lower potential, the current flows. The grid-connected solar inverter attempts to keep its output voltage greater than the grid voltage. Net current flow from solar to the grid is the result of this.

What is a grid-tie inverter?

A grid-tie inverter converts direct current (DC) power from solar panels into alternating current (AC) power that can be used in your home or fed into the grid. Grid-tie inverters help maintain the balance between energy consumption and energy production, making them a crucial component in solar energy systems.

How do inverters provide grid services?

In order to provide grid services, inverters need to have sources of power that they can control. This could be either generation, such as a solar panel that is currently producing electricity, or storage, like a battery system that can be used to provide power that was previously stored.



## What is a grid-connected inverter

---



### What Does A Grid Inverter Do?

Aug 4, 2025 · A grid inverter--also called a grid-tie inverter or on-grid inverter--is a type of power electronic device designed to connect renewable energy sources, such as solar panels, to the ...

### What Does A Grid Connected Inverter Do

A grid-connected inverter, also known as a grid-tie inverter, is a fundamental component of solar power systems. It converts the direct current (DC) generated by solar panels into alternating ...



### On Grid Inverter: Basics, Working Principle and Function

Jun 30, 2022 · A grid-tie inverter (GTI for short) also called on-grid inverter, which is a special inverter. In addition to converting direct current into alternating current, the output alternating ...

### What is a Grid-Tied Inverter?

Nov 17, 2023 · The grid-connected solar inverter attempts to keep its output voltage greater than the grid voltage. Net current flow from solar to the grid is the result of this. It's still not as easy ...



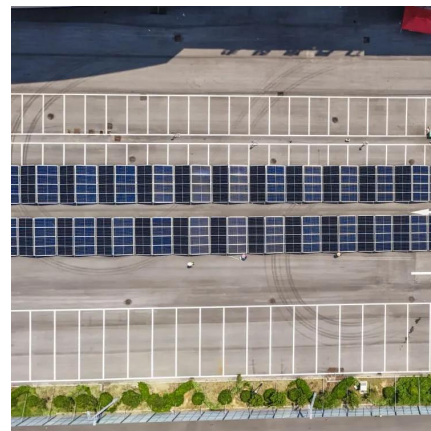
## What Is A Grid-Tied Inverter?

What Exactly Is a Grid-Tied Inverter? A grid-tied inverter, also known as a grid-connected or on-grid inverter, is the linchpin that connects your solar panels to the utility grid. Its primary ...



## What Is a Grid-Tied Inverter? Explained

Jun 11, 2025 · A grid-tied inverter, also known as a grid-connected or on-grid inverter, is a critical device that connects solar panels to the utility grid. Its primary function is to convert the direct ...



## Grid-Connected Inverters: The Ultimate Guide

Jun 11, 2025 · Introduction to Grid-Connected Inverters Definition and Functionality Grid-connected inverters are power electronic devices that convert direct current (DC) power ...





## [What Is a Grid Tie Inverter? See Why Experts Recommend It](#)

Jul 9, 2025 · A grid-tie inverter, also known as a grid-connected inverter, is a device that allows your solar energy system to work in tandem with the electrical grid. Essentially, it is the bridge ...



## [Solar Integration: Inverters and Grid Services Basics](#)

1 day ago · Inverter-based resources might also respond to signals from an operator to change their power output as other supply and demand on the electrical system fluctuates, a grid ...

## Contact Us

---

For catalog requests, pricing, or partnerships, please visit:  
<https://www.llsolarenergy.co.za>

**Scan QR Code for More Information**



<https://www.lsolarenergy.co.za>