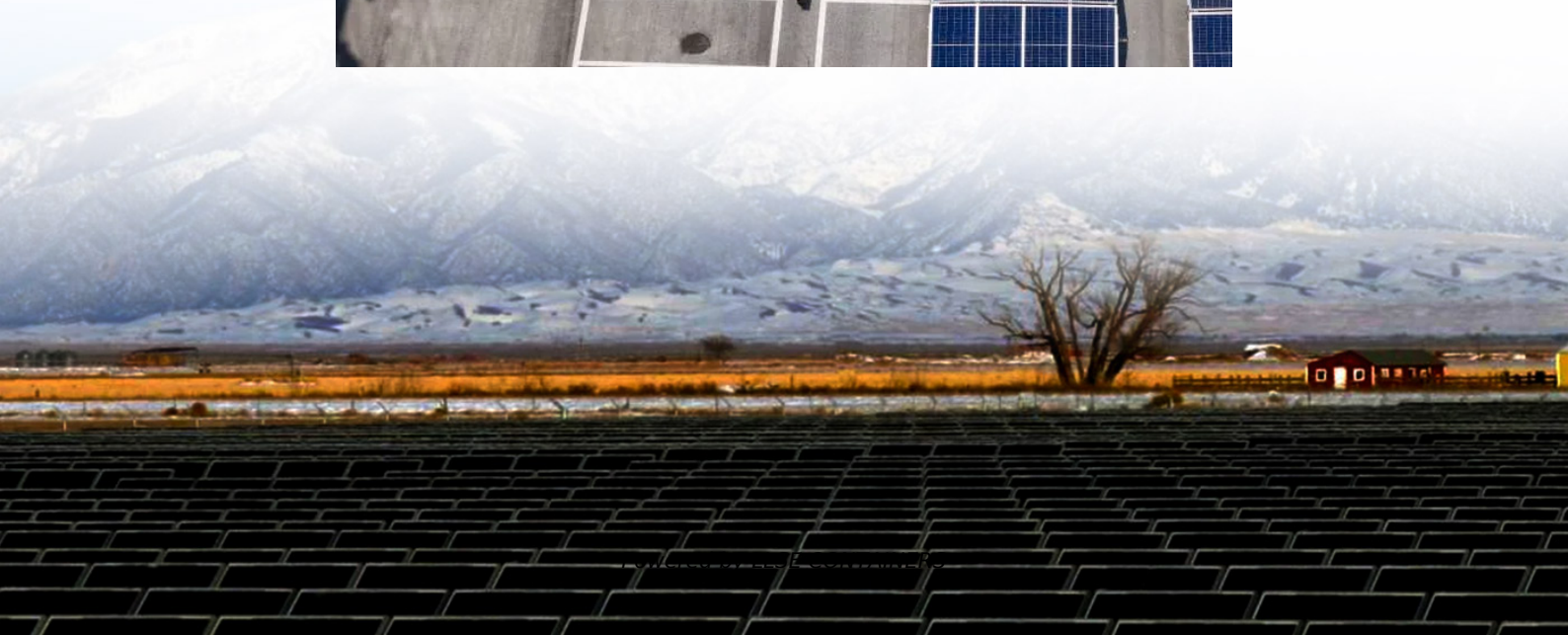
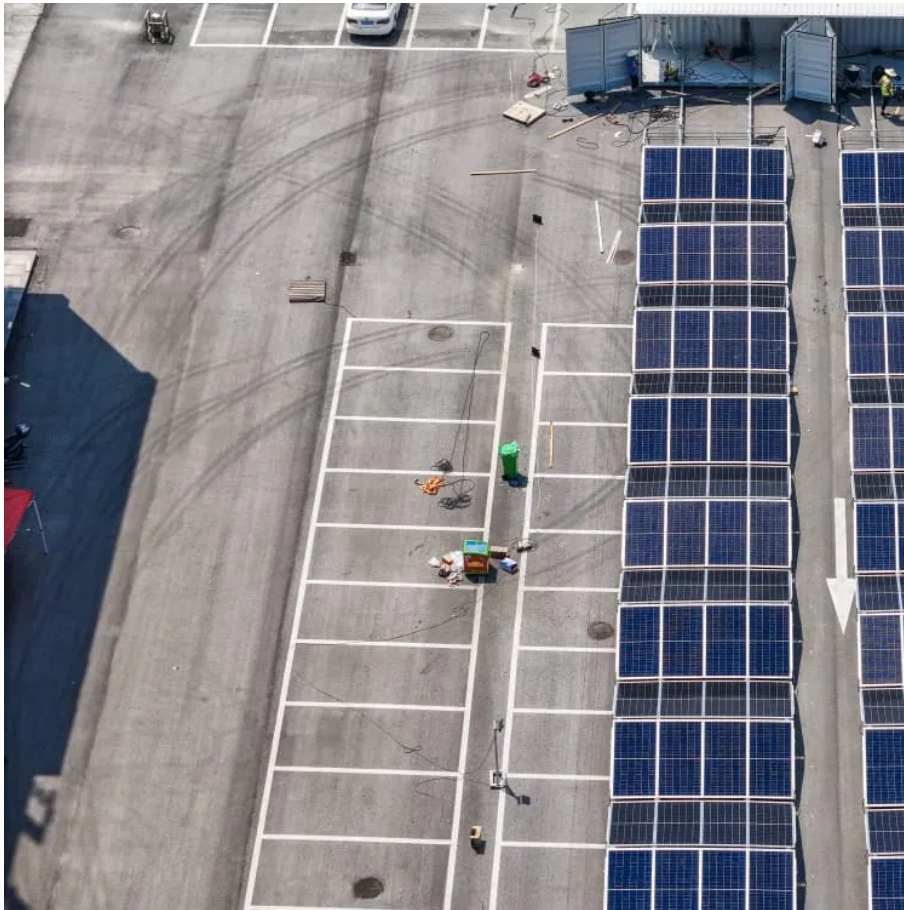


What is base station communication





Overview

What is a base station in a telecommunications network?

A base station is a critical component in a telecommunications network. A fixed transceiver that acts as the central communication hub for one or more wireless mobile client devices. In the context of cellular networks, it facilitates wireless communication between mobile devices and the core network.

What is a base station and how does it work?

A base station is a fixed point of communication between mobile devices and the wider telecom network. It transmits and receives radio signals, enabling your phone to access voice, data, and internet services. Together, thousands of base stations form a seamless web of coverage known as a cellular network. How Does It Work?

.

Why are base stations important?

Base stations are the backbone of wireless communication networks, playing a pivotal role in signal transmission, network reliability, and high-speed data connectivity. As technology evolves, the importance of base stations will continue to grow, addressing new challenges and supporting the ever-expanding demand for wireless communication services.

Why are base stations important in cellular communication?

Base stations are important in the cellular communication as it facilitate seamless communication between mobile devices and the network communication. The demand for efficient data transmission are increased as we are advancing towards new technologies such as 5G and other data intensive applications.



What is base station communication



What is a Base Station in Telecommunications?

What is a Base Station? A base station is a critical component in a telecommunications network. A fixed transceiver that acts as the central communication hub for one or more wireless mobile ...

What are Base Station in Telecommunications?

Nov 21, 2025 · A base station connects your phone to the network. It acts as a hub between mobile devices and the core system.



Types of Base Stations

Jul 23, 2025 · Base stations are one of the widely used components in the field of wireless communication and networks. It is an access point or ...

Base Station

A base station is a radio receiver which may have one or multiple antenna. It was first used in mobile telecommunication networks. The base station is responsible for maintaining ...



[What is the difference between Base Station ...](#)

The performance of base stations directly affects the service quality of mobile communication networks, including call quality, data transmission rate, ...



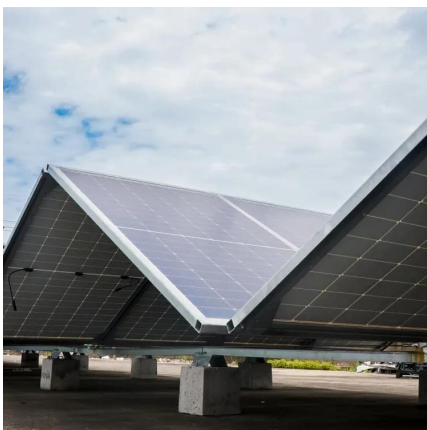
[Base Stations and Cell Towers: The Pillars of Mobile ...](#)

May 16, 2024 · Base stations and cell towers are critical components of cellular communication systems, serving as the infrastructure that supports seamless mobile connectivity. These ...



[What Does a Base Station Do and Why Is It Essential for ...](#)

Sep 5, 2025 · A base station is a fixed point of communication between mobile devices and the wider telecom network. It transmits and receives radio signals, enabling your phone to access ...





[Understanding Base Stations: The Backbone of Wireless Communication](#)

Jan 6, 2025 · In today's digital age, reliable and high-speed communication is more essential than ever. Whether it's for mobile phones, internet services, or IoT (Internet of Things) devices, ...



[What Is the Role of a Base Station in Wireless Communication?](#)

Jun 27, 2025 · Base stations are the backbone of wireless communication networks, playing a pivotal role in signal transmission, network reliability, and high-speed data connectivity. As ...

[What Is A Base Station Antenna](#)

Apr 22, 2024 · base station antenna is a crucial component of wireless communication networks, primarily used to facilitate the transmission and ...



[What Is a Base Station? Definition and How It Works](#)

Oct 10, 2025 · A base station is a fixed transceiver that serves as the central communication point for mobile devices within a defined geographical area, known as a cell. It is sometimes called ...



[What is a base station and how are 4G/5G ...](#)

Aug 16, 2022 · Base station is a stationary trans-receiver that serves as the primary hub for connectivity of wireless device communication.

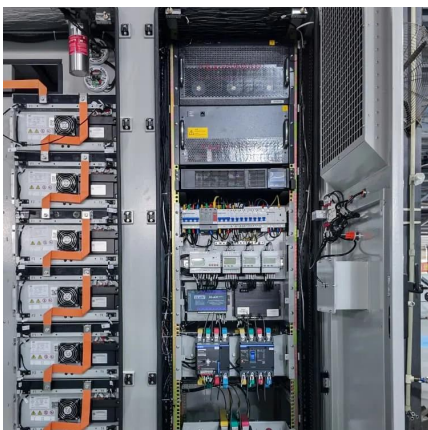


[What is a Base Station? -- From Communication Core to ...](#)

Aug 19, 2025 · The base station is an indispensable piece of infrastructure in the mobile communication network, silently supporting every phone call, message, and network ...

[Understanding the Basics: What is a Base ...](#)

Aug 19, 2024 · In today's digitally connected world, understanding the technology that makes communication possible is more important than ...



Base Stations

Jul 23, 2025 · Base stations form a key part of modern wireless communication networks because they offer some crucial advantages, such as wide coverage, continuous communications and ...



What is a base station?

Mar 4, 2021 · In telecommunications, a base station is a fixed transceiver that is the main communication point for one or more wireless mobile client devices.



What Is A Base Station?

Apr 22, 2024 · A base station is an integral component of wireless communication networks, serving as a central point that manages the transmission and reception of signals between ...

Contact Us

For catalog requests, pricing, or partnerships, please visit:
<https://www.llsolarenergy.co.za>

Scan QR Code for More Information



<https://www.llsoleenergy.co.za>