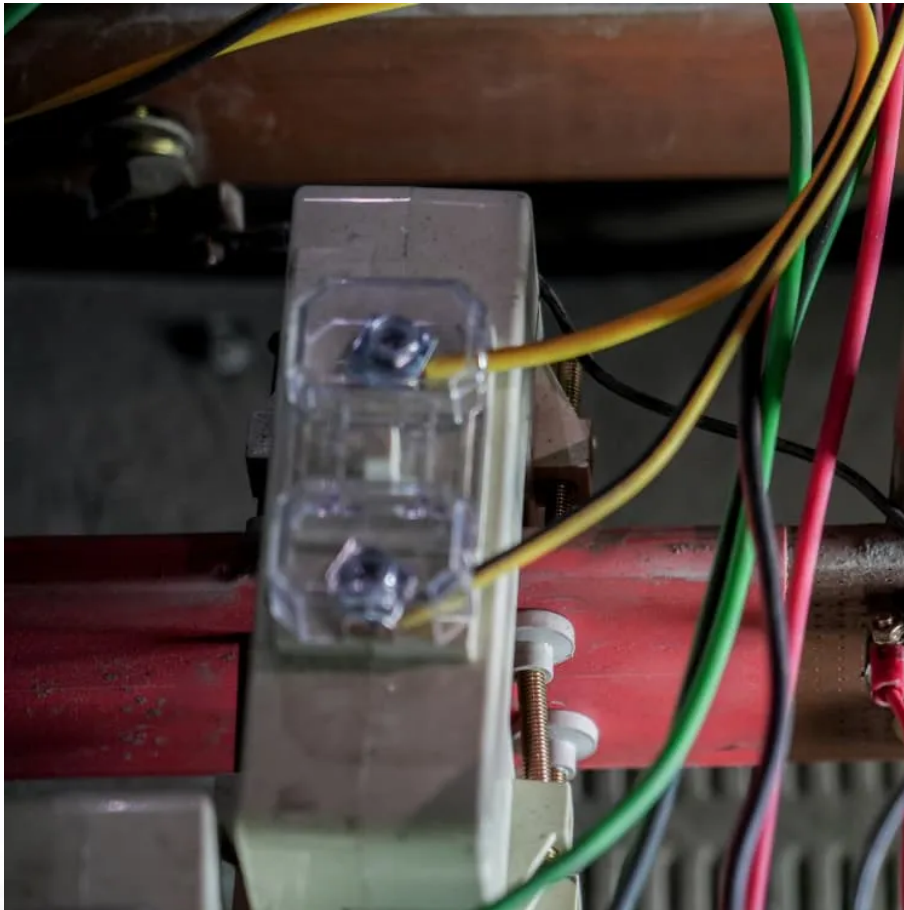


What is the base station power management module





Overview

What is a base station?

The base station is a transceiver and acts as an interface between a mobile station and network using microwave radio communication. It consists of three part elements: one or more transceivers, several antenna mounted on a tower or building, power system, and air conditioning equipment.

What is base station Power?

Base station power refers to the output power level of base stations, which is defined by specific maximum limits (24 dBm for Local Area base stations and 20 dBm for Home base stations) and includes tolerances for deviation from declared power levels, as well as specifications for total power control dynamic range. How useful is this definition?

.

What is a solar-powered base station?

A solar-powered base station as shown in Fig. 5.14 consists of a PV powering unit, a base station and a cooling unit. The base station uses radio signals to connect devices to network as a part of traditional cellular telephone network and solar powering unit is used to power it.

What is a base station & a PV powering Unit?

The base station uses radio signals to connect devices to network as a part of traditional cellular telephone network and solar powering unit is used to power it. The PV powering unit uses solar panels to generate electricity for base stations in areas with no access to grid or areas connected to unreliable grids.



What is the base station power management module



Mastering L6201: Stable Performance in Communication Base Station Power

The technical features of the L6201 play a crucial role in power management for communication base stations. This power manager boasts high efficiency, maintaining efficiency under high ...

[Understand the principles of power architecture and power management](#)

Oct 25, 2024 · As we all know, Distributed Power Architecture (PDA) is the first generation of power architecture for base stations. An example of a PDA is shown in Figure 1. This power ...



[What is the base station power management module](#)

These tools simplify the task of selecting the right power management solutions for these devices and, thereby, provide an optimal power solution for 5G base stations components.

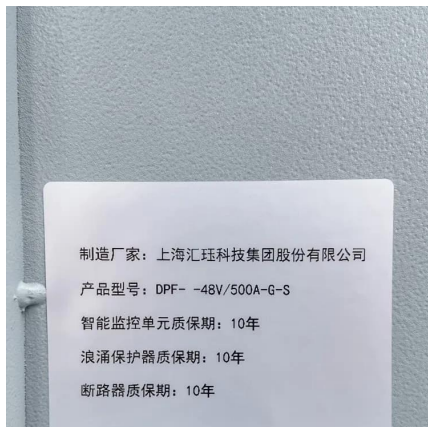
[Small Cells, Big Impact: Designing Power Solutions for 5G ...](#)

Apr 1, 2023 · Small cells are smaller and cheaper than a cell tower and can be installed in a variety of areas, bringing more base stations closer to users. A large number of base stations ...



Base Station Energy Storage Board: The Unsung Hero of ...

Aug 30, 2020 · What Exactly Does a Base Station Energy Storage Board Do? Think of it as the Swiss Army knife of power management for telecom towers. Modern versions like the ...



Different English Terms for Telecom Base Station Power ...

Oct 9, 2025 · Understand the different English terms for telecom base station power systems, including Telecom Base Station Power System, Cell Tower Energy Solution, Base Station ...



5G Base Station Power Supply System: NextG Power's ...

May 21, 2025 · Discover NextG Power's 5G micro base station power solutions! Our IP65-rated 2000W/3000W modules and 48V 20Ah/50Ah LFP batteries ensure reliable connectivity.





Power Management of Base Transceiver Stations for Mobile ...

May 30, 2022 · A Base Transceiver Station (BTS) is a piece of equipment consisting of telecommunication devices and the air interface of the mobile network. It is referred to as the ...



Contact Us

For catalog requests, pricing, or partnerships, please visit:
<https://www.llsolarenergy.co.za>

Scan QR Code for More Information



<https://www.llsolarenergy.co.za>