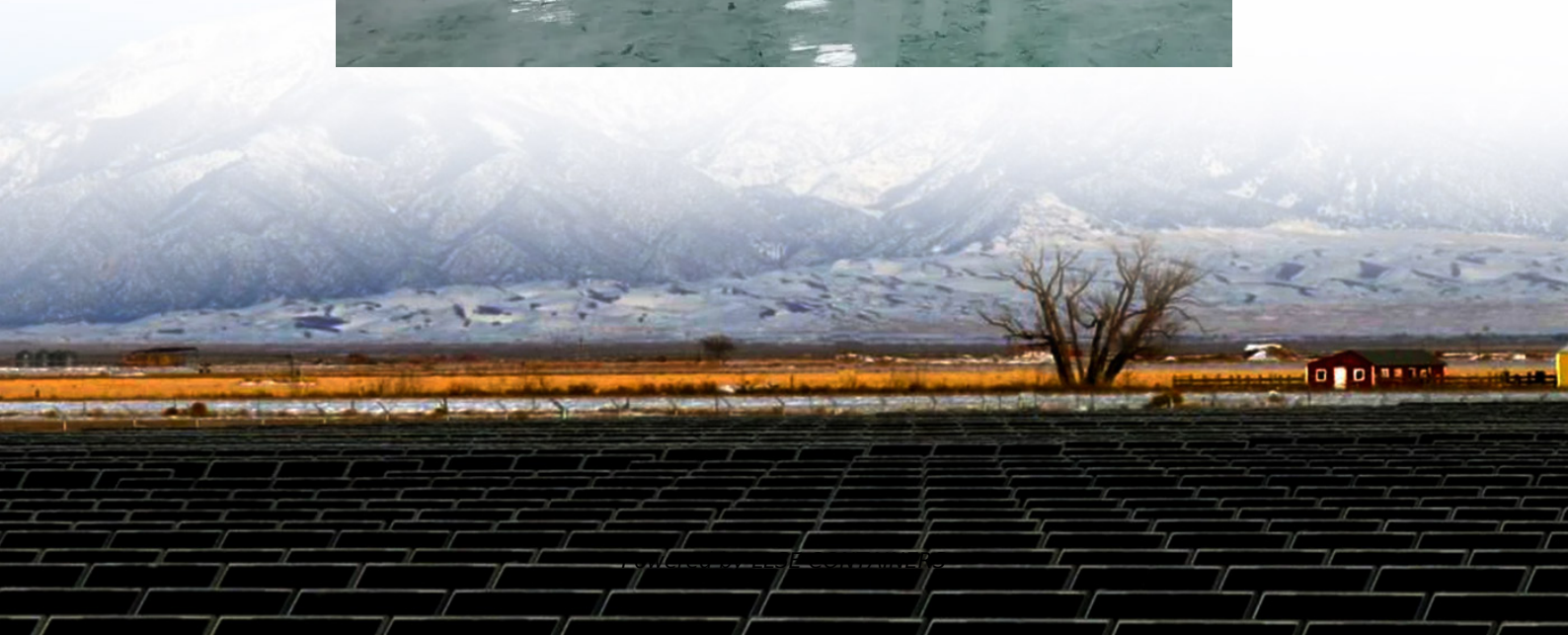


What is the current of a 12v solar panel 200w





Overview

How many amps does a 12v-200w solar panel produce?

In terms of current, 12V-200W solar panels are usually rated at 8 to 10 Amps. The amperage of the solar panel is generally specified by the manufacturer under I_{mp} or I_{mpp} , which stands for Current at Maximum Power. In other words, if enough sunlight is provided, a 12V-200W solar panel will produce between 8 and 10 Amps.

How many amps are in a 200 watt solar panel?

So for a 200 watt, 12 volt solar panel: $200 \text{ watts} = 12 \text{ volts} \times \text{Amps}$ $\text{Amps} = 200 \text{ watts} / 12 \text{ volts}$ $\text{Amps} = 16.67 \text{ amps}$ And for a 200 watt, 24 volt solar panel: As shown, the current or amps fluctuates in relation to the solar panel voltage - lower voltage means higher amperage, while higher voltage means lower amperage.

How do you calculate wattage for a 200 watt solar panel?

Using Ohm's Law for power calculations, we can determine the amperage yield for a 200 watt solar panel based on the voltage rating: $\text{Power (Watts)} = \text{Voltage (Volts)} \times \text{Current (Amps)}$ So for a 200 watt, 12 volt solar panel: $200 \text{ watts} = 12 \text{ volts} \times \text{Amps}$ $\text{Amps} = 200 \text{ watts} / 12 \text{ volts}$ $\text{Amps} = 16.67 \text{ amps}$ And for a 200 watt, 24 volt solar panel:

How much power does a 200 watt solar panel deliver?

A 200 watt solar panel can deliver up to 200 watts of power at a time to a connected device or system. It's important to distinguish between power and energy when discussing solar panels. Power is an instantaneous measurement of energy transfer, while energy is power accumulated over time.



What is the current of a 12v solar panel 200w



[200 Watt Solar Panel How Many Amps?](#)

Oct 20, 2025 · Under optimal conditions, a 200W solar panel generates about 10 to 12 amps per hour at 18V, or up to 16 amps per hour at 12V. That translates to 50-70 amp-hours per day, ...

[What Can A 200 Watt Solar Panel Power? A Complete Guide](#)

Feb 6, 2024 · In terms of current, 12V-200W solar panels are usually rated at 8 to 10 Amps. The amperage of the solar panel is generally specified by the manufacturer under I_{mp} or I_{mpp} , ...



[How Many Amps is a 200W Solar Panel?](#)

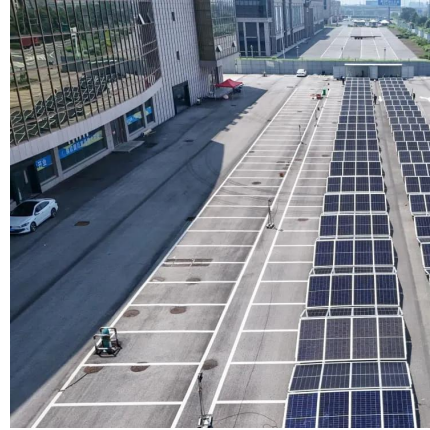
If our 200W solar system uses 36V, the amps would be 5.5 instead of 11.1. A 200 watt 12V solar panel delivers up to 18 volts when it charges, so it produces 11.1 amps. To reach 18 volts you ...

[What Can A 200 Watt Solar Panel Power? A Complete ...](#)

Feb 6, 2024 · In terms of current, 12V-200W solar panels are usually rated at 8 to 10 Amps. The amperage of the solar panel is generally specified by the manufacturer under I_{mp} or

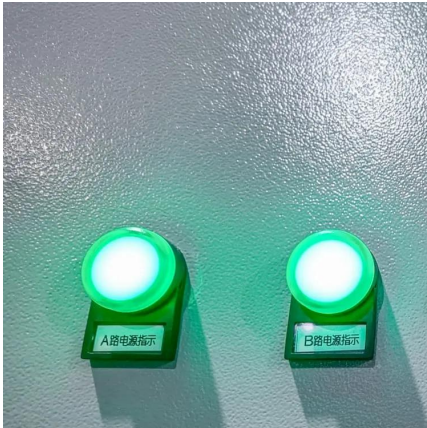


Imp, ...



[How Many Amps Are Produced By 200-Watt Solar Panels](#)

Nov 13, 2025 · From the table, we can derive several insights about power, current, and voltage for 200W solar panels: Power Consistency: All the panels have the same rated power output ...



[How Many Power, Volts and Amps does a 200w Solar Panel ...](#)

Dec 2, 2023 · Most Common Voltage Levels The voltage of a solar panel determines the electrical force that allows current to flow through a circuit. Residential grid-tied solar panel systems ...



[200 Watt Solar Panel How Many Amps?](#)

Sep 21, 2024 · 1. 200W Solar Panel Operating Current Generally speaking, when you are designing and installing a solar panel system, the energy company will not directly provide you ...





How much current does a 200w photovoltaic panel draw

In terms of current, 12V-200W solar panels are usually rated at 8 to 10 Amps. The amperage of the solar panel is generally specified by the manufacturer under I_{mp} or I_{mpp} , which stands for ...



Contact Us

For catalog requests, pricing, or partnerships, please visit:
<https://www.llsolarenergy.co.za>

Scan QR Code for More Information



<https://www.llsolarenergy.co.za>