

# What is the polarity of solar panels





## Overview

---

What is solar panel polarity?

Polarity refers to the positive and negative terminals of the panel, and reversing them can lead to performance issues, equipment damage, or even safety hazards. Understanding solar panel polarity is important because it will help you to ensure a proper installation.

Are solar panels polarized?

Solar panels are polarized to generate more power during the day, but if your system is not set up correctly, you could be wasting valuable energy. Have you ever wondered what “polarity” means?

It means that one side of the generator has positive charges, and the other has negative charges.

How do you determine the polarity of a solar panel?

**Tools for Identifying Polarity** Several tools can assist in determining the polarity of solar panels: **Multimeter:** A primary tool for measuring voltage and current, helping identify which terminal is positive or negative.

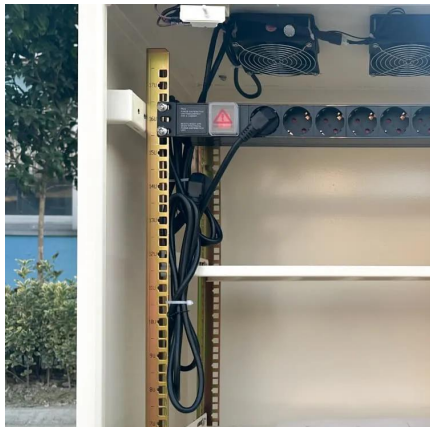
Why is polarity important when connecting multiple solar panels?

In connecting multiple panels, maintaining consistent polarity is vital to prevent short circuits and energy losses. When visually inspecting solar panels, the positive and negative terminals are usually marked with a plus (+) and minus (-) sign, respectively.



## What is the polarity of solar panels

---

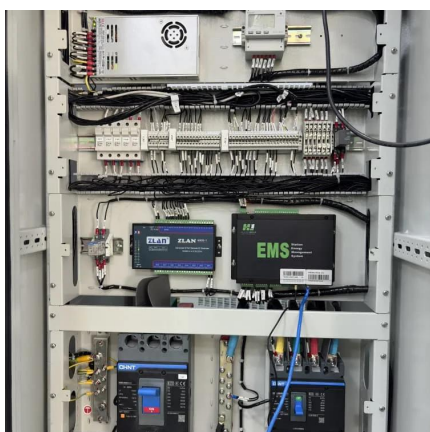


### [How to identify the positive and negative poles of solar panels](#)

Oct 13, 2024 · A multimeter is one of the most effective tools when it comes to determining the polarity of solar panels. This device measures voltage, resistance, and current flow, making it ...

### [How to Check Solar Panel Polarity \(Reverses + Fixes\)](#)

Sep 13, 2022 · A solar panel's polarity is essential when installing or replacing a solar panel. Solar panels are polarized to generate more power during the day, but if your system is not set up ...



### [What is the physics behind solar panel polarity - no45](#)

Similarly, aging panels may develop \*potential-induced degradation\* (PID), where leakage currents slowly neutralize the internal electric field, eroding polarity and cutting output by 20% ...

### [How do you know if a solar panel is positive or negative](#)

To identify a solar panel's polarity, check the MC4 connectors (male/female) or use a multimeter (DC voltage mode)--positive terminals show +V (e.g., +18V for a 20W panel),



negative reads ...



### [How to Check Solar Panel Polarity](#)

Nov 17, 2023 · Doing the installation and wiring correctly is a big deal for the solar panels to work well and be safe. This explained the consequences of having solar panels reverse polarity. ...



### **What is the difference between forward and reverse solar panel polarity**

Oct 12, 2025 · When working with solar panels, understanding polarity is non-negotiable--get it wrong, and you're risking system failure, equipment damage, or even safety hazards. Let's cut ...



### [Identifying Positive and Negative Terminals on a Solar Panel](#)

Oct 23, 2024 · Ensuring correct polarity in solar panels is required for the proper functioning of your solar power system. Polarity refers to the positive and negative terminals of the panel, ...

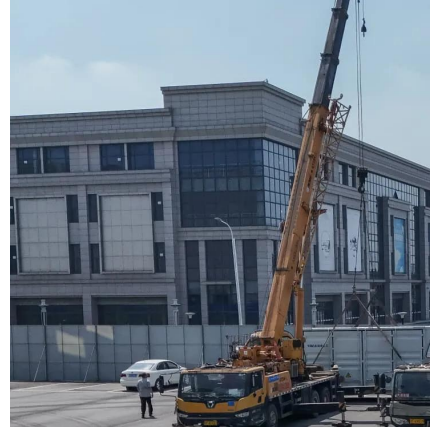
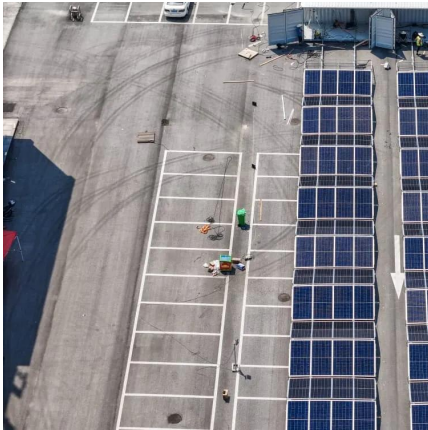






### How to identify positive and negative solar panel polarity

Figuring out the polarity of solar panels is critical for safe and efficient system performance. If you connect the positive and negative terminals incorrectly, you'll face reduced efficiency, potential ...



### Positive and negative polarity of solar photovoltaic panels

A simple voltage reading will show you the polarity of a solar panel, even when inside. To measure across the solar panel terminals or wires, put the red positive meter lead on one side, ...

## Contact Us

---

For catalog requests, pricing, or partnerships, please visit:  
<https://www.llsolarenergy.co.za>

**Scan QR Code for More Information**



<https://www.llsolarenergy.co.za>