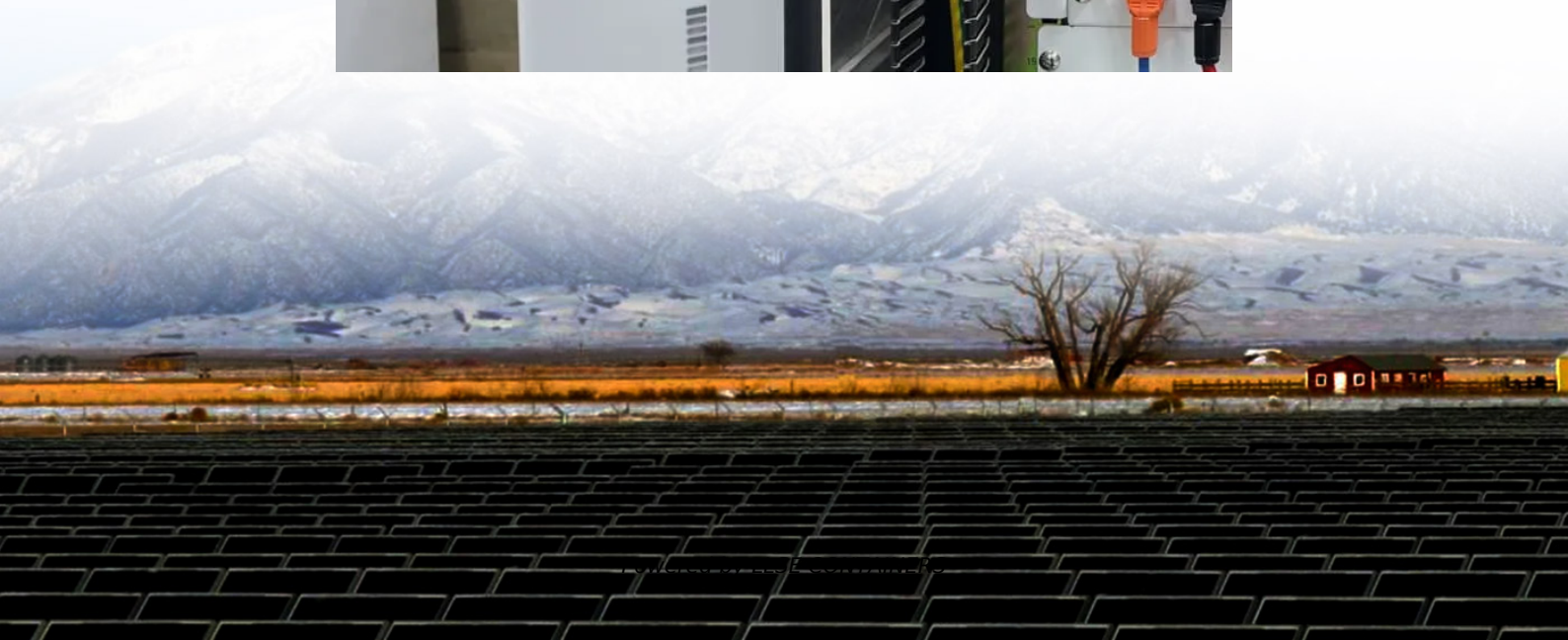


What is the power of solar panels connected in parallel





Overview

Why do solar panels need to be connected in parallel?

The connection of multiple solar panels in parallel arises from the need to reach certain current values at the output, without changing the voltage. In fact, by wiring several solar panels in series we increase the voltage (keeping the same current), while wiring them in parallel we increase the current (keeping the same voltage).

Are solar panels series or parallel?

In the debate of solar panel series vs parallel, the best choice depends on your specific needs and system conditions. Series wiring increases voltage, making it ideal for minimizing power loss over long distances and optimizing MPPT charge controller efficiency.

Should a solar panel be wired in series or parallel?

To solve this problem and to optimize the energy performance of the entire system, it is advisable to wire two panels in series (obtaining a doubling of the voltage) and then wire in parallel the three pairs previously wired in series (so as to have doubled the voltage and tripled the current).

How to calculate solar panels connected in parallel configuration?

The following figure shows solar panels connected in parallel configuration. If the current $IM1$ is the maximum power point current of one module and $IM2$ is the maximum power point current of other module then the total current of the parallel-connected module will be $IM1 + IM2$.



What is the power of solar panels connected in parallel



[Solar Panel Series vs Parallel: Which is Better?](#)

Discover the optimal choice between solar panel series vs parallel configurations. Learn how to maximize efficiency and output with our ...

[Understanding Solar Panels in Parallel and Series Connections](#)

Jul 24, 2025 · In today's world of clean energy, knowing how solar panels are wired--either in parallel or series--is critical for anyone looking to build or optimize a solar power system. ...



[What is Parallel Connection in Solar Panels?](#)

Nov 17, 2023 · So, parallel connection in solar panels allows you to combine the current output of multiple panels while keeping the voltage consistent. This parallel configuration increases the ...

[What is Parallel Connection in Solar Panels?](#)

Nov 17, 2023 · So, parallel connection in solar panels allows you to combine the current output of multiple panels while keeping the voltage consistent. ...



[Solar Panel Series vs Parallel: Which is Better?_Renogy US](#)

Discover the optimal choice between solar panel series vs parallel configurations. Learn how to maximize efficiency and output with our comprehensive guide on solar panel series vs parallel ...



[What is a Series or Parallel Connection in Solar Panels?](#)

Aug 29, 2025 · When learning about solar power systems, one of the first concepts you'll encounter is series and parallel connections. These two wiring methods are fundamental in ...



[Series vs Parallel Solar Panels: Key Differences ...](#)

Apr 28, 2025 · Series vs Parallel Solar Panels: Key Differences When installing solar panels, one key decision is how to connect them for ...





[How to Connect Solar Panels in Parallel](#)

Aug 18, 2025 · When building a solar power system, connecting solar panels in parallel is a practical way to increase current while keeping voltage constant. This setup is common in 12V ...

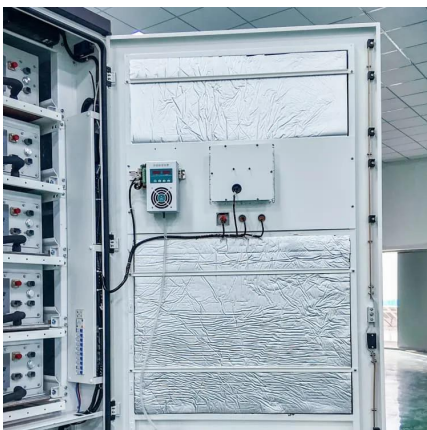


[Solar Panel Series Vs Parallel: Wiring Differences. And Your ...](#)

Nov 11, 2024 · Solar Panels Series vs Parallel: What Is The Difference? Whether you connect solar panels in series or in parallel, the total power output (in Watts) is the sum of the power ...

[Understanding Solar Panels in Parallel and ...](#)

Jul 24, 2025 · In today's world of clean energy, knowing how solar panels are wired--either in parallel or series--is critical for anyone looking to build or ...



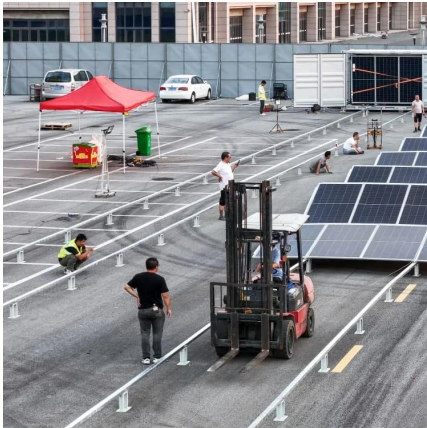
[Series, Parallel & Series-Parallel Connection of Solar Panels](#)

3 days ago · What is a Solar Photovoltaic Array? A Solar Photovoltaic Module is available in a range of 3 WP to 300 WP. But many times, we need power in a range from kW to MW. To ...



[Series vs Parallel Solar Panels: Key Differences -- Direct Solar Power](#)

Apr 28, 2025 · Series vs Parallel Solar Panels: Key Differences When installing solar panels, one key decision is how to connect them for optimal performance. The two most common wiring ...

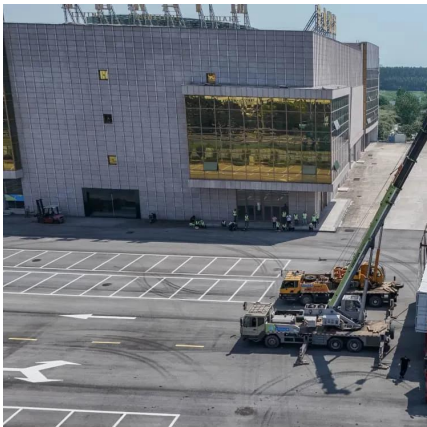


[How to Wire Two or More Solar Panels in Parallel](#)

Jan 11, 2025 · How to wire in parallel both identical and different solar panels, what happens to the panels in case of shading, how to optimize the system, what is the function of the blocking ...

[Should Solar Panels Be Connected In Series or Parallel?](#)

Aug 27, 2024 · When designing a solar power system, choosing the right configuration for connecting your solar panels is critical to ensuring optimal performance. This guide will explore ...



[How to Connect Solar Panels in Parallel](#)

Aug 18, 2025 · When building a solar power system, connecting solar panels in parallel is a practical way to increase current while keeping voltage ...



Contact Us

For catalog requests, pricing, or partnerships, please visit:
<https://www.llsolarenergy.co.za>

Scan QR Code for More Information



<https://www.llsolarenergy.co.za>