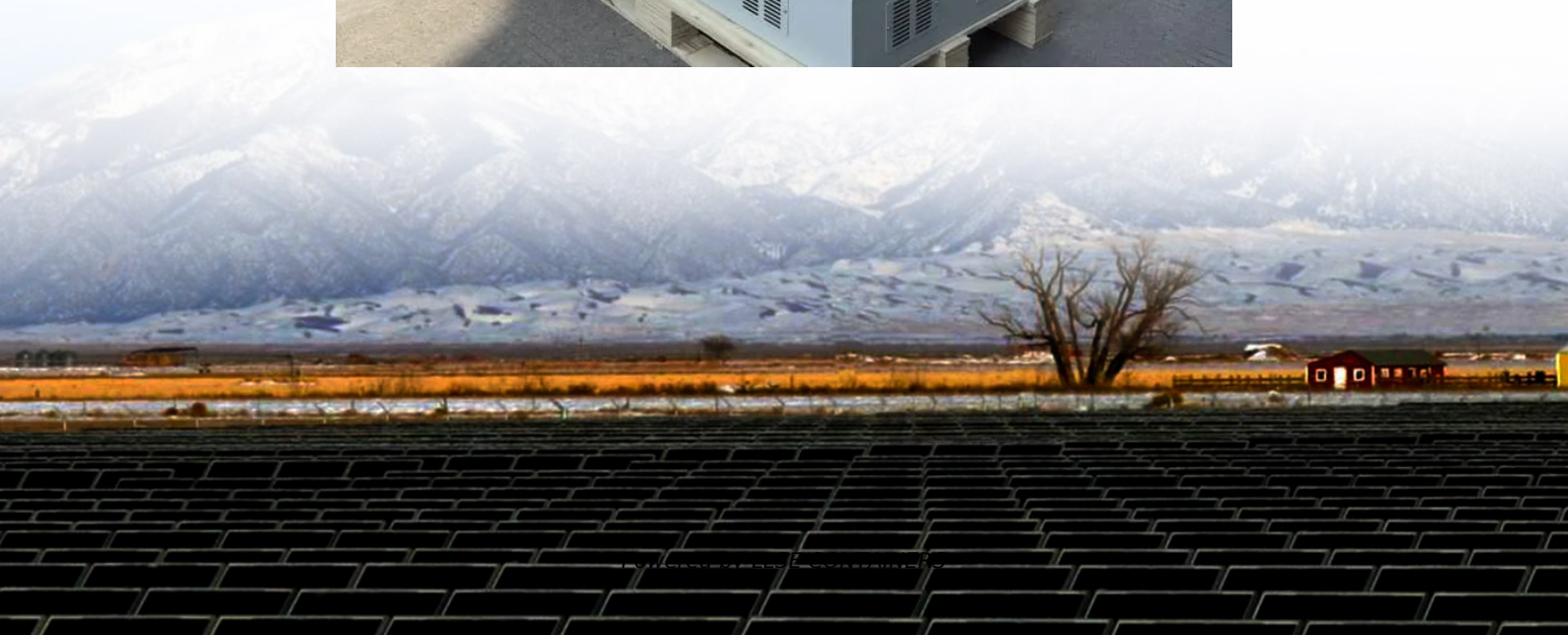


What is the voltage after solar panels are connected in series





Overview

Why do solar panels need to be connected in series?

Putting panels in series makes it so the voltage of the array increases. This is important because a solar power system needs to operate at a certain voltage for the inverter to work properly. So, you connect your solar panels in series to meet the operating voltage window requirements of your inverter.

What is a series connection solar panel?

Definition: In a series connection, solar panels are linked end-to-end, where the positive terminal of one panel connects to the negative of the next. Effect on Voltage: Adds up (e.g., two 12V panels = 24V total). Effect on Current (Amps): Stays the same as a single panel. Best for increasing system voltage.

What if two solar panels are connected in series?

So, if you connect two solar panels with a rated voltage of 40 volts and a rated amperage of 5 amps in series, the voltage of the series would be 80 volts, while the amperage would remain at 5 amps. Putting panels in series makes it so the voltage of the array increases.

What happens when a solar panel is wired in series?

When you connect the positive terminal of one panel to the negative terminal of another panel, you create a series connection. When you connect two or more solar panels like this, it becomes a PV source circuit. When solar panels are wired in series, the voltage of the panels adds together, but the amperage remains the same.



What is the voltage after solar panels are connected in series



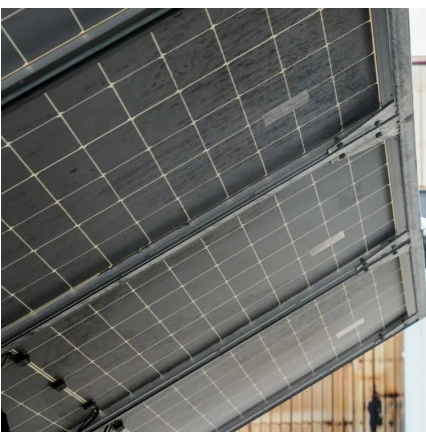
[What is a Series or Parallel Connection in Solar Panels?](#)

Aug 29, 2025 · A series connection links solar panels end-to-end. Technically, you connect the positive terminal of one panel directly to the negative terminal of the next. Voltage Behavior:

...

[Solar Panel Series Calculator](#)

1. What is a Solar Panel Series Calculator?
Definition: This calculator determines the total voltage output when solar panels are connected in series. Purpose: It helps solar installers and DIY ...



[Wiring Your Solar Panel: Series, Parallel, and Series-Parallel](#)

The way you connect your solar panels directly impacts the voltage and current output of your system. In this post, we will break down the three primary wiring configurations: series, ...

[How Do Solar Panels Connect In Series Vs Parallel?](#)

2 days ago · Solar panels connected in series increase system voltage (VOC additive), while parallel connections boost current (ISC additive). For example, two 40V/10A panels in series ...



[Series, Parallel & Series-Parallel Connection of Solar Panels](#)

What Is A Solar Photovoltaic array?
Series Connection of Modules
Parallel Connection of Modules
Series - Parallel Connection of Modules-
Mixed Combination
Sometimes the system voltage required for a power plant is much higher than what a single PV module can produce. In such cases, N-number of PV modules is connected in series to deliver the required voltage level. This series connection of the PV modules is similar to that of the connections of N-number of cells in a module to obtain the required vo See more on electricaltechnology

Videos of What Is The Voltage After Solar Panels Are Connect...

Watch video on greencoast Essential Guide to Solar Panel Wiring: Parallel Vs. Series Vs. Series-Parallel Connections greencoast Feb 15, 2022
Watch video on diysolarforum Solar panel strings: Parallel & Series explained diysolarforum Sep 21, 2019
Watch video on battlebornbatteries What's The Difference Between Wiring Solar Panels In Series or Parallel? battlebornbatteries 3 months ago
Watch full video SolarReviews

How To Wire Solar Panels In Series Vs.

How you wire solar panels will influence how much energy a solar system produces. Find out if wiring in series, parallel, or both, is best for you.



[How To Safely Connect Solar Panels In Series Or Parallel](#)

May 29, 2025 · Learn how to connect solar panels in series or parallel, including wiring diagrams, voltage differences, and expert DIY tips. Master your solar setup today!



[Series, Parallel & Series-Parallel Connection of Solar Panels](#)

2 days ago · What is a Solar Photovoltaic Array? A Solar Photovoltaic Module is available in a range of 3 WP to 300 WP. But many times, we need power in a range from kW to MW. To ...

[How many volts are two solar panels connected in series?](#)

Aug 2, 2024 · Connecting solar panels of different brands in series is generally not recommended, primarily due to the risk of performance discrepancies. Each manufacturer may produce ...



[Series Vs Parallel Solar Panels: Complete Wiring Guide 2025](#)

Jul 25, 2025 · The choice between series vs parallel solar panels ultimately depends on your specific application, site conditions, and system requirements. Series configurations excel in ...



[Solar Panel Connection Methods: Series vs Parallel Analysis](#)

Apr 24, 2025 · Comprehensive guide on solar panel connection methods. Learn about series and parallel wiring configurations, their impact on voltage and current, and how to choose the right ...



Contact Us

For catalog requests, pricing, or partnerships, please visit:
<https://www.llsolarenergy.co.za>

Scan QR Code for More Information



<https://www.llsolarenergy.co.za>