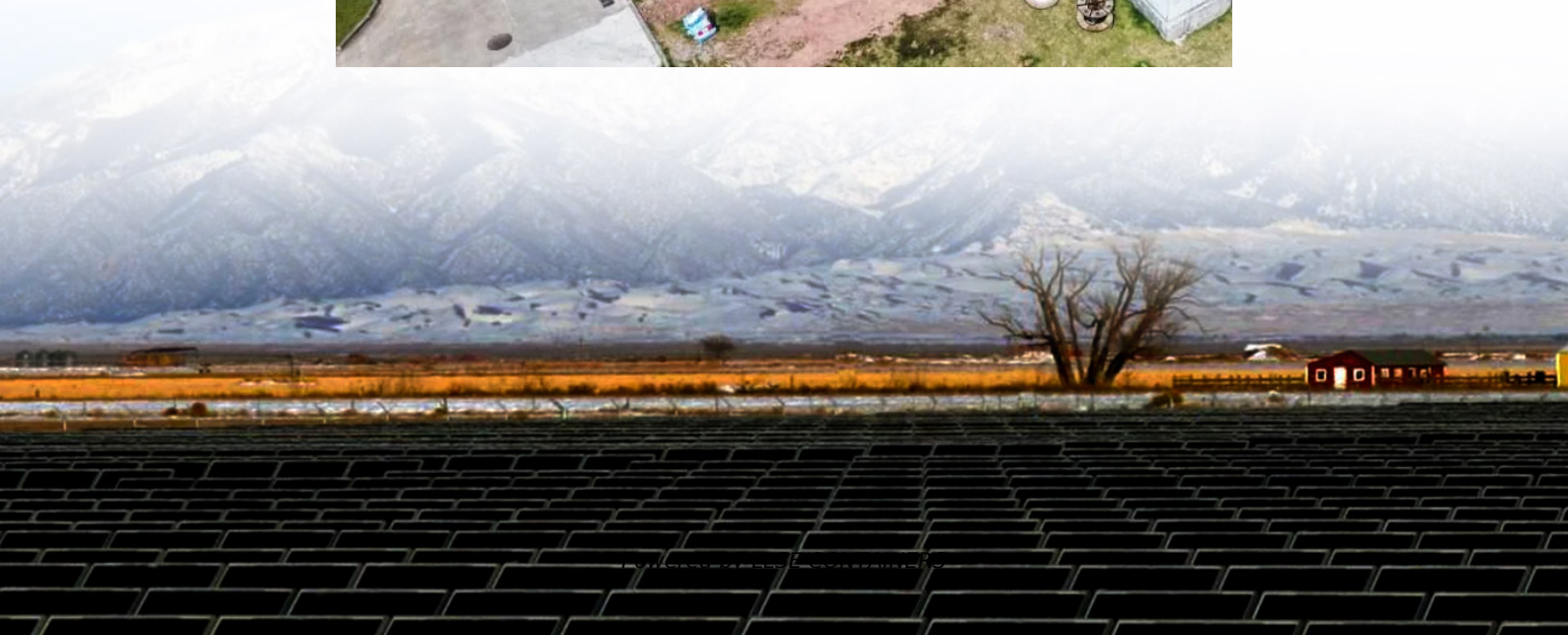


What types of energy are used to power base stations





Overview

What are the different types of power stations?

Fossil fuel plants remain the most common type of power station, converting the chemical energy stored in fuel into electricity. Renewable Energy Power Stations: Wind, solar, and hydroelectric plants are the future of sustainable electricity generation. These facilities minimize environmental impact and help meet global sustainability goals.

What are battery storage power stations?

Battery storage power stations are usually composed of batteries, power conversion systems (inverters), control systems and monitoring equipment. There are a variety of battery types used, including lithium-ion, lead-acid, flow cell batteries, and others, depending on factors such as energy density, cycle life, and cost.

Why do we need a power station?

It is essential for our modern lifestyle. Power stations are big scale producers of electricity (hundreds of megawatts or gigawatts of electricity). They are usually built in remote areas. The energy from them is transported to the towns via an electrical grid system. uranium/plutonium, in which nuclear fission produces the heat.

What are the core functions of energy storage power stations?

In addition to these core functions, functions such as anti-backflow protection, support for parallel/off-grid operation, and islanding protection further enhance the reliability and versatility of energy storage power stations.



What types of energy are used to power base stations



[The Best of the BESS: The Role of Battery Energy Storage ...](#)

Oct 24, 2025 · In an era of rapid technological advancement and increasing reliance on renewable energy, battery energy storage systems (BESS) are emerging as pivotal players in ...

[Base Station Energy Storage: The Unsung Hero of the World Power ...](#)

A remote village in Kenya lights up at night not with diesel generators, but using excess energy stored in mobile base stations. Meanwhile, in Tokyo, 5G towers double as emergency power ...



[Energy performance of off-grid green cellular base stations](#)

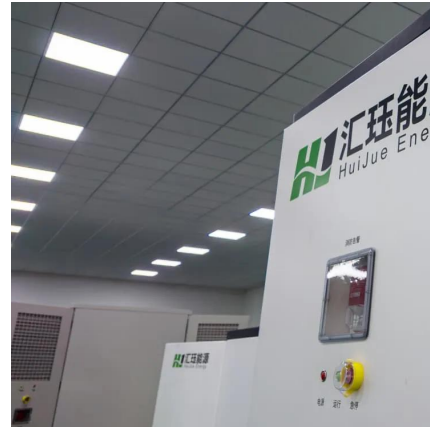
Aug 1, 2024 · The most energy-hungry parts of mobile networks are the base station sites, which consume around 60 80 % of their total energy. One of the approaches for relieving this energy ...

[Different English Terms for Telecom Base Station Power ...](#)

Oct 9, 2025 · Telecom base stations are at the heart of global communication networks, providing the backbone for cellular and internet services. Over the years, various terms have



been used ...



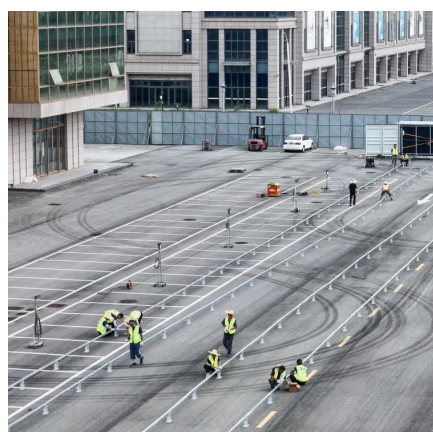
13 Types of Power Sources

May 30, 2025 · Power sources are essential for powering systems across industries--from homes and offices to factories and off-grid locations. The choice of a power source significantly ...



[Battery storage power station - a comprehensive guide](#)

3 days ago · Battery storage power stations store electrical energy in various types of batteries such as lithium-ion, lead-acid, and flow cell batteries. These facilities require efficient operation ...



[Renewable Energy Sources for Power Supply of Base ...](#)

Sep 8, 2022 · Abstract -- An overview of research activity in the area of powering base station sites by means of renewable energy sources is given. It is shown that mobile network ...



How much energy storage battery is used in base stations?

Aug 25, 2024 · Navigating the complexities of energy storage requirements for base stations elucidates the dynamic interplay between capacity, technology, regulations, and sustainability. ...



Understanding Industrial Power Stations: A Complete Guide

Power stations are generally categorized based on the source of energy they use. They can be broadly classified into traditional fossil fuel-based plants and modern renewable energy plants: ...

Contact Us

For catalog requests, pricing, or partnerships, please visit:
<https://www.llsolarenergy.co.za>

Scan QR Code for More Information



<https://www.llsolarenergy.co.za>