

## Where does the DC battery cabinet busbar refer to





## Overview

---

What is a battery bus bar PCB?

The battery busbar PCB is a circuit board used for battery pack connection and management. It is mainly composed of signal acquisition components (such as FPC, PCB, FFC, etc.), plastic structural parts, copper and aluminum bars, etc., and is connected into a whole through processes such as hot pressing or riveting. What is a Battery Bus Bar?

.

What is a busbar in a battery system?

Yet behind every high-performance battery system is a meticulously designed busbar configuration —the unsung component that ensures safe and efficient power flow. What is a Busbar?

A busbar is a metallic strip—typically copper or aluminum —that electrically links cells, modules, and power interfaces. Its critical roles include:.

What does a busbar do?

At the battery pack level: The busbar connects the modules to the battery management system (BMS) and other electrical components of the vehicle, such as the electric motor, controller. 3. Advantages of using busbar in battery cell connection.

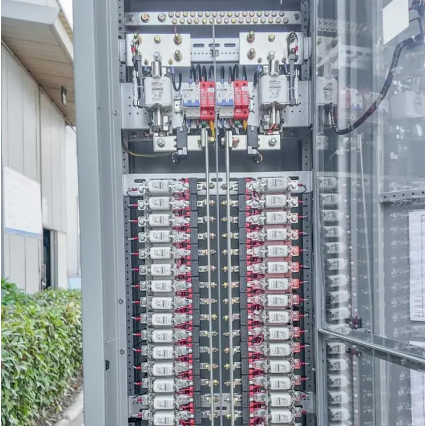
What are the key considerations for busbar configuration in lithium battery systems?

Learn the key considerations for busbar configuration in lithium battery systems, including current-carrying capacity, thermal management, safety protections, and more.



## Where does the DC battery cabinet busbar refer to

---

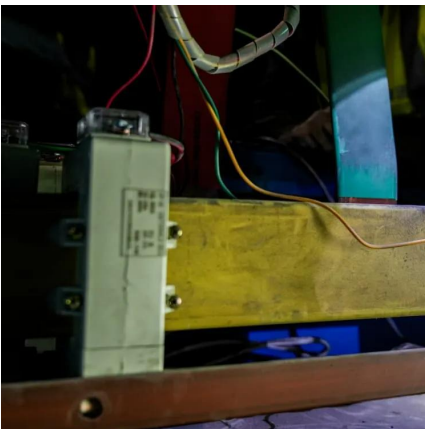


### [Battery Bus Bar: Technical Information and ...](#)

Battery Bus Bars play a crucial role in electrical systems, serving as vital connectors between batteries and other components, ensuring efficient ...

### [Application of electrical busbar in Energy Storage Batteries](#)

Conclusion Electrical busbars are integral to the efficient operation and longevity of energy storage batteries. By providing effective power distribution, thermal management, and safety ...

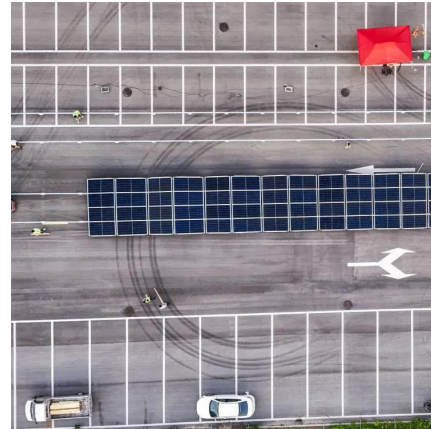


### [Key Considerations for Busbar Configuration in Lithium Battery](#)

May 14, 2025 · Learn the key considerations for busbar configuration in lithium battery systems, including current-carrying capacity, thermal management, safety protections, and more.

### [What is Bus Bar PCB for Battery? & High current bus bar](#)

Jan 10, 2025 · What is Bus Bar PCB for Battery?  
The battery busbar PCB is a circuit board used for battery pack connection and management. It is mainly composed of signal acquisition ...



### [Busbar design application note](#)

May 15, 2023 · In battery packs for electric mobility, a busbar is used to connect battery cells or modules. In automotive battery packs, busbars are used to connect battery modules together.



### [Key Considerations for Busbar Configuration in Lithium...](#)

May 14, 2025 · Learn the key considerations for busbar configuration in lithium battery systems, including current-carrying capacity, thermal management, safety protections, and more.



### [What is Bus Bar PCB for Battery? & High ...](#)

Jan 10, 2025 · What is Bus Bar PCB for Battery? The battery busbar PCB is a circuit board used for battery pack connection and management. It is ...







### [What is Busbars? How it benefits EV Battery Modules?](#)

The assembly of busbars in EV battery system EV busbar assembly is a critical process in EV battery systems, ensuring efficient, reliable, and safe power distribution. It involves designing ...



### [What is Bus Bar PCB for Battery? A ...](#)

Jul 2, 2025 · An effective busbar design will ensure that your battery-powered system is efficient and protected. At PCBTok, we specialize in providing ...

### [Where does the DC battery cabinet busbar refer to](#)

Busbar design application note In battery packs for electric mobility, a busbar is used to connect battery cells or modules. In automotive battery packs, busbars are used to connect battery ...



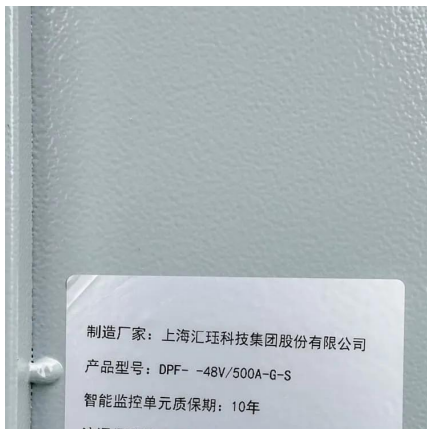
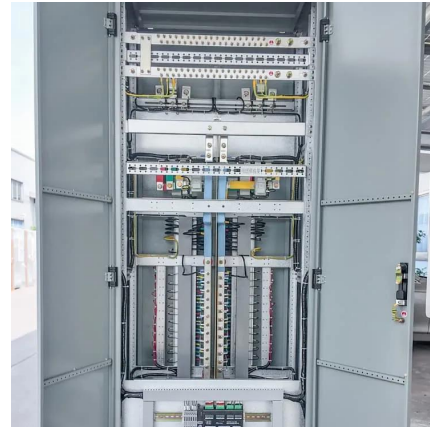
### [Battery Bus Bar: Technical Information and Applications](#)

Battery Bus Bars play a crucial role in electrical systems, serving as vital connectors between batteries and other components, ensuring efficient current flow and stability in various ...



### [What is Bus Bar PCB for Battery? A Comprehensive Guide](#)

Jul 2, 2025 · An effective busbar design will ensure that your battery-powered system is efficient and protected. At PCBTok, we specialize in providing reliable PCB manufacturing, one-stop ...



### [The role of busbars in connecting battery cells](#)

Aug 24, 2024 · As we know, busbars play an important role in connecting the battery cells in electric vehicle batteries. To better understand this role, we need to delve into the structure of ...

## Contact Us

---

For catalog requests, pricing, or partnerships, please visit:  
<https://www.llsolarenergy.co.za>

**Scan QR Code for More Information**



<https://www.llsolarenergy.co.za>