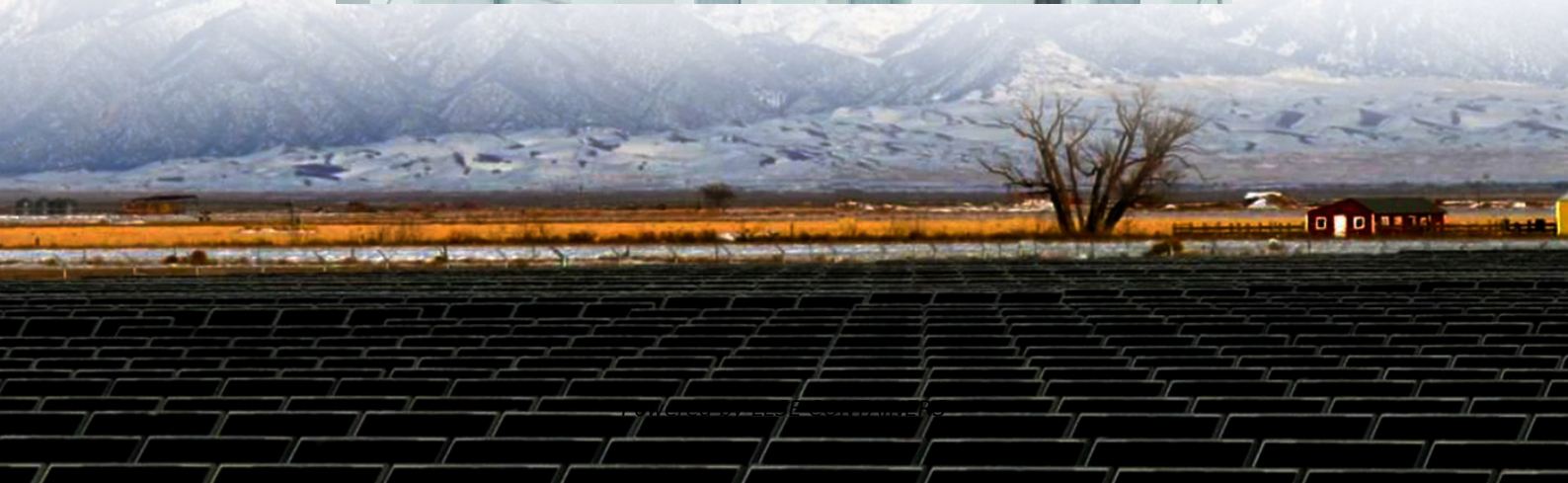


# **Where is the Lusaka Communications Green Base Station located**





## Overview

---

Where is Lusaka located?

Description: Lusaka is the capital and largest city of Zambia, located in the southern part of the central plateau at an elevation of 1,279 meters (4,196 feet) above sea level. With a population of approximately 3.5 million (2019 estimate), it serves as the country's commercial and administrative center.

What is the elevation of Lusaka Airport?

Coordinates: S15°19.85' / E28°27.16' View all Airports in Lusaka, Zambia.  
Elevation is 3779.0 feet MSL.

What is Lusaka known for?

The city features a mix of modern commercial buildings, government offices, and residential areas. The Cairo Road serves as the main business boulevard and commercial heart of the city. Notable landmarks include the Freedom Statue, commemorating Zambia's independence, and the Lusaka City Market, one of the largest markets in the country.

How many people live in Lusaka?

With a population of approximately 3.5 million (2019 estimate), it serves as the country's commercial and administrative center. The city was founded in 1905 as a railway station on the Great North Road and was named after the Lusaka village headman.



## Where is the Lusaka Communications Green Base Station located



### [LUSAKA COMMUNICATIONS ENERGY STORAGE SYSTEM ...](#)

Mbabane Energy Storage Station Energy Saving Equipment Where is Mbabane located?The capital city of Hhohho Province, and also the capital of Swaziland, is Mbabane. It is situated in ...

### [ENVIRONMENTAL IMPACT STATEMENT FOR THE ...](#)

Oct 30, 2024 · This option involves constructing the 330kV Transmission line from the Lusaka South Multi-Facility Economic Zone Substation located 20km east of Lusaka Central Business ...

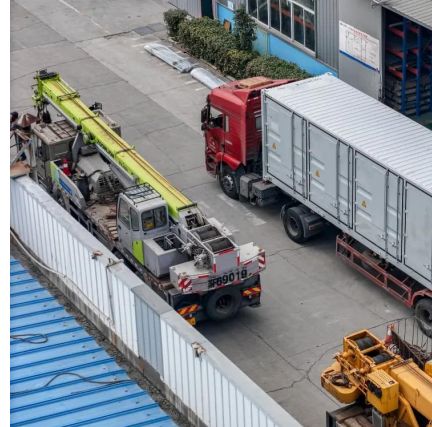


### [Lusaka Map , Zambia , Detailed Maps of Lusaka](#)

Dec 10, 2024 · About Lusaka Lusaka is the capital and largest city of Zambia, located in the southern part of the central plateau at an elevation of 1,279 ...

### [Zambia completes ground receiving satellite project](#)

Oct 15, 2024 · from ARNOLD MULENGA in Lusaka, ZambiaZambia BureauLUSAKA, (CAJ News) - ZAMBIA'S US\$14 million ground receiving satellite station is now fully operational. The ...



### [ZAMBIA MAKES PROGRESS IN LAUNCHING SATELLITE](#)

16 August 2024 Government has completed the construction of the Earth Receiving Station ahead of the launch of the country's first satellite. Technology and Science Minister Hon. Felix ...



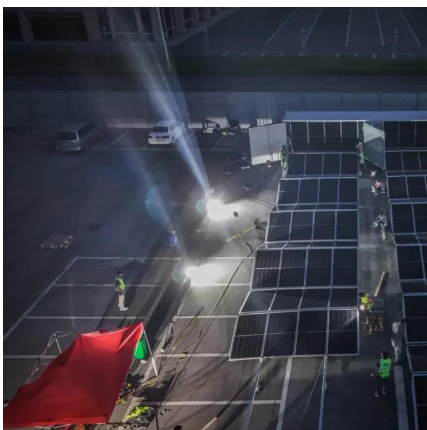
### **Tower Construction**

Our qualified technical team carry out site design, surveys, geo-technical analysis, site build, project management, installation and optimisation of all major suppliers' base stations, base ...



### [Lusaka Telecom Solutions LTS Group](#)

The Lusaka Telecom Solutions LTS Group headquarters is located in Lusaka, Zambia. This central hub plays a pivotal role in the company's operations, housing key departments such as ...







## LAUNCH OF COMMUNICATION TOWERS

Sep 16, 2025 · Lusaka Telecom Solutions successfully launches New Telecommunication Towers in Various districts . The residents of Ngabwe, Lufubu Constituency, located in Chief ...



## Lusaka Map , Zambia , Detailed Maps of Lusaka

Dec 10, 2024 · About Lusaka Lusaka is the capital and largest city of Zambia, located in the southern part of the central plateau at an elevation of 1,279 meters (4,196 feet) above sea ...

## Contact Us

---

For catalog requests, pricing, or partnerships, please visit:  
<https://www.llsolarenergy.co.za>

**Scan QR Code for More Information**



<https://www.lsolarenergy.co.za>