

# **Which type of inverter is most commonly connected to the grid for North Asia Communications base stations**





## Overview

---

Which mode of VSI is preferred for grid-connected PV systems?

Between the CCM and VCM mode of VSI, the CCM is preferred selection for the grid-connected PV systems. In addition, various inverter topologies i.e. power de-coupling, single stage inverter, multiple stage inverter, transformer and transformerless inverters, multilevel inverters, and soft switching inverters are investigated.

What are the requirements for grid-connected inverters?

The requirements for the grid-connected inverter include; low total harmonic distortion of the currents injected into the grid, maximum power point tracking, high efficiency, and controlled power injected into the grid. The performance of the inverters connected to the grid depends mainly on the control scheme applied.

What is the role of inverter in grid-tied PV systems?

Controllers Reference Frames In grid-tied PV systems, inverter plays a prominent role in energy harvesting and integration of grid-friendly power systems. The reliability, performance, efficiency, and cost-effectiveness of inverters are of main concern in the system design and mainly depend on the applied control strategy.

How are inverters classified?

Inverters are classified based on their size, mode of operation, or configuration topology. Considering the classification based on the mode of operation, inverters can be classified into three broad categories: Inverter classification according to Interconnection types is discussed in EME 812 (11.4. Grid connection and role of inverters).



## Which type of inverter is most commonly connected to the grid for I

---

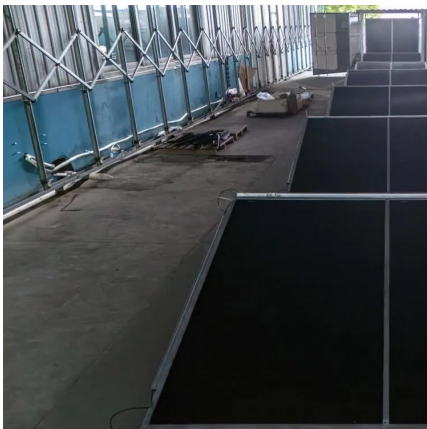


### [A Comprehensive Guide to the Different Types of Solar Inverters](#)

Nov 6, 2024 · Solar inverters are the backbone of any solar energy system, responsible for converting the DC (direct current) electricity produced by solar panels into AC (alternating ...

### [A comprehensive review on inverter topologies and control strategies](#)

Oct 1, 2018 · The requirements for the grid-connected inverter include; low total harmonic distortion of the currents injected into the grid, maximum power point tracking, high efficiency, ...



### [Grid-Tied PV Inverter VS Regular Inverter:Key Differences](#)

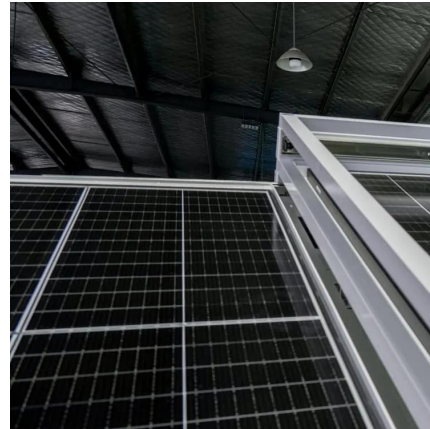
Mar 10, 2025 · What is a PV Inverter? A PV (photovoltaic) inverter converts DC (direct current) electricity generated by solar panels into AC (alternating current), making it usable for homes, ...

### [A Comprehensive Review on Grid Connected Photovoltaic Inverters ...](#)

Aug 13, 2020 · This review article presents a comprehensive review on the grid-connected PV systems. A wide spectrum of different classifications and configurations of grid-



connected ...



### [Inverter types and classification , AE 868: Commercial Solar ...](#)

Inverters based on PV system type Considering the classification based on the mode of operation, inverters can be classified into three broad categories: Stand-alone inverters (supplies stable ...



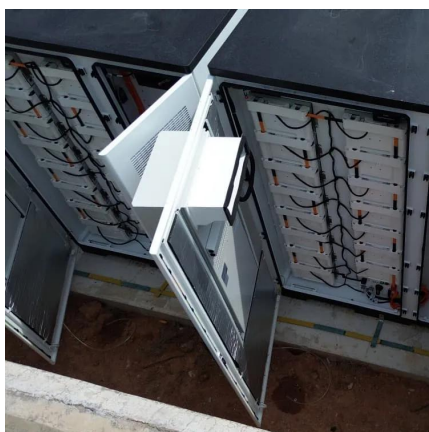
### [How Many Types of Inverters Are There?](#)

On-Grid inverters are the most commonly used type of inverter. These inverters connect solar energy systems to the grid and transfer the excess energy obtained directly to the electrical grid.



### [Solar Integration: Inverters and Grid Services Basics](#)

2 days ago · For instance, a network of small solar panels might designate one of its inverters to operate in grid-forming mode while the rest follow its lead, like dance partners, forming a ...







## [Understanding the Three Types of PV Inverters for Optimal ...](#)

Aug 19, 2025 · In grid-connected PV systems, string inverters are the most prevalent choice due to their balance of cost, reliability, and efficiency. They're widely adopted for residential and ...



## [Types of Inverters - Grid Tie Inverter vs Hybrid Inverter](#)

Jun 11, 2024 · Considering these pros and cons will help you determine if a hybrid inverter with grid-tie capability is the right choice for your solar power setup. Grid-tie inverters are used in ...

## [A Comprehensive Review on Grid Connected Photovoltaic ...](#)

Aug 13, 2020 · This review article presents a comprehensive review on the grid-connected PV systems. A wide spectrum of different classifications and configurations of grid-connected ...



## [Understanding Solar Inverters: On-Grid, Off-Grid and Hybrid](#)

Mar 31, 2025 · As solar energy adoption grows worldwide, choosing the right inverter becomes critical for maximizing system efficiency and long-term value. Whether you're powering a city ...



## Contact Us

---

For catalog requests, pricing, or partnerships, please visit:  
<https://www.llsolarenergy.co.za>

### Scan QR Code for More Information



<https://www.llsolarenergy.co.za>