

Which type of land does the energy storage power station belong to





Which type of land does the energy storage power station belong to



what kind of land does the energy storage station belong to

A battery storage power station, or battery energy storage system (BESS), is a type of energy storage power station that uses a group of batteries to store electrical energy.

Land use of energy storage power station project

The construction of shared energy storage projects on enclosed land surfaces may conflict with cultural or socio-economic human activities including recreation, farming, and ranching. the ...



How much land does a pumped storage power station occupy?

Sep 1, 2024 · A pumped storage power station typically occupies a substantial amount of land, primarily due to the requirements for reservoir creation, access roads, and ancillary ...

Energy Storage Power Station Project Land Area: What You ...

Aug 18, 2023 · The Land Equation: More Than Just Square Footage Size Matters (But So Does Shape) Forget "location, location, location." In energy storage land allocation, it's "orientation,



...



What unit does the energy storage power station belong to?

Jul 26, 2024 · The energy storage power station primarily belongs to the realm of energy systems, specifically categorized under renewable energy technologies, electricity management, and ...



How Much Land Do Energy Storage Power Stations Really ...

As renewable energy capacity surges globally - solar and wind installations grew 18% year-over-year in Q1 2025 - the need for utility-scale energy storage has never been greater. But here's ...



How many acres does the shared energy storage power station ...

Feb 6, 2024 · 1. The area occupied by a shared energy storage power station can vary significantly based on factors like technology used, capacity, and location. 2. Generally, these ...





Land planning for energy storage power stations

Jul 16, 2024 · It is crucial to integrate energy storage devices within wind power and photovoltaic (PV) stations to effectively manage the impact of large-scale renewable energy generation on ...

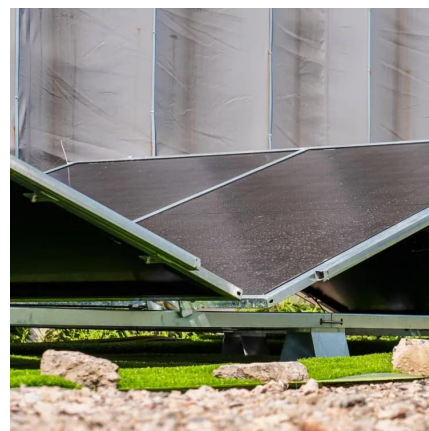


Energy storage power station land use standards

Jan 26, 2025 · Existing zoning standards addressing the risks associated with energy storage include isolation of the land use in particular districts, use of setbacks and buffers, requiring ...

Energy Storage Site Selection: What Land is Suitable?

4 days ago · In today's article, we will analyze what type of land is suitable for an energy storage facility. This topic might be new to you, as discussions about leasing land for solar or wind ...



Contact Us

For catalog requests, pricing, or partnerships, please visit:
<https://www.llsolarenergy.co.za>



Scan QR Code for More Information



<https://www.llsoleenergy.co.za>